


# Anti-MASPIN antibody ab65136

敲除 验证

[1 References](#) [3 图像](#)

### 概述

|       |   |
|-------|---|
| 产品名称  | Anti-MASPIN抗体   |
| 描述    | 兔多克隆抗体to MASPIN   |
| 宿主    | Rabbit  |
| 经测试应用 | 适用于: ICC/IF, WB   |
| 种属反应性 | 与反应: Human<br>预测可用于: Mouse, Rat   |
| 免疫原   | A synthesized peptide derived from an internal region of human MASPIN   |
| 阳性对照  | Extracts from Hela cells WB: HeLa, HaCaT, Caco-2 cell lysate  |
| 常规说明  | <p>The Life Science industry has been in the grips of a reproducibility crisis for a number of years. Abcam is leading the way in addressing this with our range of recombinant monoclonal antibodies and knockout edited cell lines for gold-standard validation. Please check that this product meets your needs before purchasing.</p> <p>If you have any questions, special requirements or concerns, please send us an inquiry and/or contact our Support team ahead of purchase. Recommended alternatives for this product can be found below, along with publications, customer reviews and Q&amp;As</p> |

### 性能

|      |  |
|------|--|
| 形式   | Liquid   |
| 存放说明 | Shipped at 4°C. Store at -20°C. Stable for 12 months at -20°C. |
| 存储溶液 | pH: 7.4  |
| 纯度   | Immunogen affinity purified                                    |
| 克隆   | 多克隆  |
| 同种型  | IgG  |

### 应用

The Abpromise guarantee

**Abpromise™** 承诺保证使用ab65136于以下的经测试应用

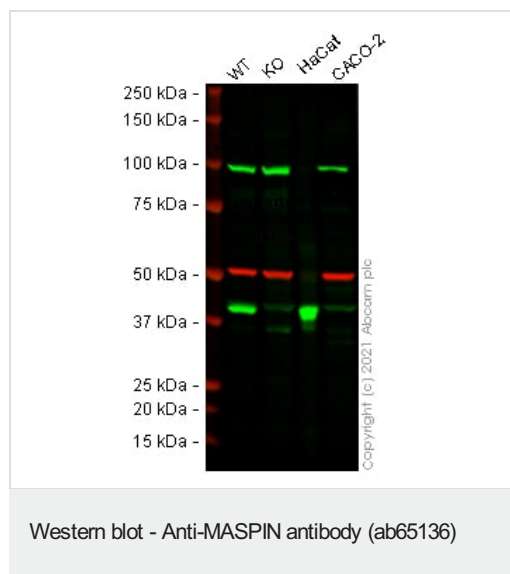
“应用说明”部分 下显示的仅为推荐的起始稀释度;实际最佳的稀释度/浓度应由使用者检定。

| 应用     | Ab评论 | 说明   |
|--------|------|--|
| ICC/IF |      | Use a concentration of 1 - 5 µg/ml.  |
| WB     |      | 1/500 - 1/1000. Detects a band of approximately 42 kDa (predicted molecular weight: 42 kDa). |

## 靶标

|              |   |
|--------------|---|
| <b>功能</b>    | Tumor suppressor. It blocks the growth, invasion, and metastatic properties of mammary tumors. As it does not undergo the S (stressed) to R (relaxed) conformational transition characteristic of active serpins, it exhibits no serine protease inhibitory activity. |
| <b>组织特异性</b> | Normal mammary epithelial cells.  |
| <b>序列相似性</b> | Belongs to the serpin family. Ov-serpin subfamily.  |
| <b>细胞定位</b>  | Secreted > extracellular space.   |

## 图片



**All lanes** : Anti-MASPIN antibody (ab65136) at 1/500 dilution

**Lane 1** : Wild-type HeLa cell lysate

**Lane 2** : SERPINB5 knockout HeLa cell lysate

**Lane 3** : HaCaT cell lysate

**Lane 4** : Caco-2 cell lysate

Lysates/proteins at 20 µg per lane.

### Secondary

**All lanes** : Goat anti-Rabbit IgG H&L (IRDye® 800CW) preadsorbed ([ab216773](#)) at 1/20000 dilution

Performed under reducing conditions.

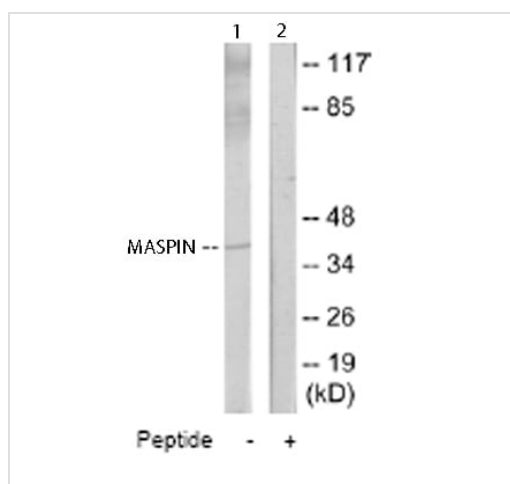
**Predicted band size:** 42 kDa

**Observed band size:** 42 kDa

**Lanes 1 - 4:** Merged signal (red and green). Green - ab65136 observed at 42 kDa. Red - loading control [ab7291](#) (Mouse anti-Alpha Tubulin [DM1A]) observed at 55 kDa.

ab65136 was shown to react with MASPIN in wild-type cells in

Western blot with loss of signal observed in SERPINB5 knockout cell line **ab264750** (SERPINB5 knockout cell lysate **ab258659**). Wild-type and SERPINB5 knockout cell lysates were subjected to SDS-PAGE. Membranes were blocked in 3 % milk in TBS-0.1 % Tween<sup>®</sup> 20 (TBS-T) before incubation with ab65136 and **ab7291** (Mouse anti-Alpha Tubulin [DM1A]) overnight at 4°C at a 1/500 dilution and a 1/20000 dilution respectively. Blots were incubated with Goat anti-Rabbit IgG H&L (IRDye<sup>®</sup> 800CW) preabsorbed (**ab216773**) and Goat anti-Mouse IgG H&L (IRDye<sup>®</sup> 680RD) preabsorbed (**ab216776**) secondary antibodies at 1/20000 dilution for 1 h at room temperature before imaging.



Western blot - Anti-MASPIN antibody (ab65136)

**All lanes :** Anti-MASPIN antibody (ab65136) at 1/500 dilution

**Lane 1 :** Extracts from Hela cells

**Lane 2 :** Extracts from Hela cells, plus immunising peptide

**Predicted band size:** 42 kDa

**Observed band size:** 42 kDa

The amount of positive control loading for the WB is 5-30 ug of total protein.

The amount of the peptide for the WB is 5-10 ug.

Immunocytochemistry/ Immunofluorescence - Anti-MASPIN antibody (ab65136)

ICC/IF image of ab65136 stained Hek293 cells. The cells were 100% methanol fixed (5 min) and then incubated in 1%BSA / 10% normal goat serum / 0.3M glycine in 0.1% PBS-Tween for 1h to permeabilise the cells and block non-specific protein-protein interactions. The cells were then incubated with the antibody (ab65136, 1µg/ml) overnight at +4°C. The secondary antibody (green) was Alexa Fluor<sup>®</sup> 488 goat anti-rabbit IgG (H+L) used at a 1/1000 dilution for 1h. Alexa Fluor<sup>®</sup> 594 WGA was used to label plasma membranes (red) at a 1/200 dilution for 1h. DAPI was used to stain the cell nuclei (blue) at a concentration of 1.43µM.

**Please note:** All products are "FOR RESEARCH USE ONLY. NOT FOR USE IN DIAGNOSTIC PROCEDURES"

### Our Abpromise to you: Quality guaranteed and expert technical support

- Replacement or refund for products not performing as stated on the datasheet

- Valid for 12 months from date of delivery
- Response to your inquiry within 24 hours
  
- We provide support in Chinese, English, French, German, Japanese and Spanish
- Extensive multi-media technical resources to help you
- We investigate all quality concerns to ensure our products perform to the highest standards

If the product does not perform as described on this datasheet, we will offer a refund or replacement. For full details of the Abpromise, please visit <https://www.abcam.cn/abpromise> or contact our technical team.

### **Terms and conditions**

---

- Guarantee only valid for products bought direct from Abcam or one of our authorized distributors