


Anti-MASH1/Achaete-scute homolog 1 antibody ab74065

★★★★★ **6 Abreviews** **36 References** **4 图像**

概述

产品名称	Anti-MASH1/Achaete-scute homolog 1 抗体
描述	兔多克隆抗体 to MASH1/Achaete-scute homolog 1
宿主	Rabbit
特异性	Ab74065 has been batch tested in WB and IF only. Some customers have successfully used this product in IHC. Please contact Abcam Scientific Support for more information.
经测试应用	适用于: ICC/IF, WB
种属反应性	与反应: Mouse, Rat, Human, Zebrafish 预测可用于: Chicken, Dog, Xenopus laevis, Rhesus monkey 
免疫原	Synthetic peptide conjugated to KLH derived from within residues 200 to the C-terminus of Human MASH1/Achaete-scute homolog 1. 参阅Abcam的专有抗源政策 (Peptide available as ab74622 .)
常规说明	<p>The Life Science industry has been in the grips of a reproducibility crisis for a number of years. Abcam is leading the way in addressing this with our range of recombinant monoclonal antibodies and knockout edited cell lines for gold-standard validation. Please check that this product meets your needs before purchasing.</p> <p>If you have any questions, special requirements or concerns, please send us an inquiry and/or contact our Support team ahead of purchase. Recommended alternatives for this product can be found below, along with publications, customer reviews and Q&As</p>

性能

形式	Liquid
存放说明	Shipped at 4°C. Store at +4°C short term (1-2 weeks). Upon delivery aliquot. Store at -20°C or -80°C. Avoid freeze / thaw cycle.
存储溶液	pH: 7.40 Preservative: 0.02% Sodium azide Constituent: PBS
	Batches of this product that have a concentration < 1mg/ml may have BSA added as a stabilising agent. If you would like information about the formulation of a specific lot, please contact our scientific support team who will be happy to help.

纯度	Immunogen affinity purified
克隆	多克隆
同种型	IgG

应用

The Abpromise guarantee **Abpromise™**承诺保证使用ab74065于以下的经测试应用

“应用说明”部分 下显示的仅为推荐的起始稀释度;实际最佳的稀释度/浓度应由使用者检定。

应用	Ab评论	说明
ICC/IF	★★★★★ (1)	Use a concentration of 5 µg/ml.
WB		Use a concentration of 1 µg/ml. Detects a band of approximately 25 kDa (predicted molecular weight: 25 kDa).

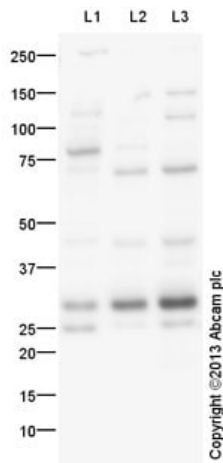
靶标

功能	May play a role at early stages of development of specific neural lineages in most regions of the CNS, and of several lineages in the PNS. Essential for the generation of olfactory and autonomic neurons. Activates transcription by binding to the E box (5'-CANNTG-3').
序列相似性	Contains 1 basic helix-loop-helix (bHLH) domain.
细胞定位	Nucleus.

图片

Immunocytochemistry/ Immunofluorescence - Anti-MASH1/Achaete-scute homolog 1 antibody (ab74065)

ab74065 staining MASH1/Achaete-scute homolog 1 in SK-N-SH cells. The cells were fixed with 100% methanol (5 min), permeabilized with 0.1% PBS-Triton X-100 for 5 minutes and then blocked with 1% BSA/10% normal goat serum/0.3M glycine in 0.1%PBS-Tween for 1h. The cells were then incubated overnight at 4°C with ab74065 at 5µg/ml and **ab7291**, Mouse monoclonal [DM1A] to alpha Tubulin - Loading Control. Cells were then incubated with **ab150081**, Goat polyclonal Secondary Antibody to Rabbit IgG - H&L (Alexa Fluor® 488), pre-adsorbed at 1/1000 dilution (shown in green) and **ab150120**, Goat polyclonal Secondary Antibody to Mouse IgG - H&L (Alexa Fluor® 594), pre-adsorbed at 1/1000 dilution (shown in pseudocolour magenta). Nuclear DNA was labelled with DAPI (shown in blue). Also suitable in cells fixed with 4% paraformaldehyde (10 min).Image was acquired with a high-content analyser (Operetta CLS, Perkin Elmer) and a maximum intensity projection of confocal sections is shown.



Western blot - Anti-MASH1/Achaete-scute homolog 1 antibody (ab74065)

All lanes : Anti-MASH1/Achaete-scute homolog 1 antibody (ab74065) at 1 µg/ml

Lane 1 : DU 145 (Human prostate carcinoma cell line) Whole Cell Lysate

Lane 2 : Brain (Rat) Tissue Lysate

Lane 3 : Brain (Mouse) Tissue Lysate

Lysates/proteins at 10 µg per lane.

Secondary

All lanes : Goat Anti-Rabbit IgG H&L (HRP) ([ab97051](#)) at 1/10000 dilution

Predicted band size: 25 kDa

Observed band size: 25,28 kDa

Additional bands at: 70 kDa. We are unsure as to the identity of these extra bands.



Western blot - Anti-MASH1/Achaete-scute homolog 1 antibody (ab74065)

All lanes : Anti-MASH1/Achaete-scute homolog 1 antibody (ab74065) at 1 µg/ml

Lane 1 : DU 145 (Human prostate carcinoma cell line) Whole Cell Lysate

Lane 2 : Brain (Rat) Tissue Lysate

Lane 3 : Brain (Mouse) Tissue Lysate

Lysates/proteins at 10 µg per lane.

Secondary

All lanes : Goat polyclonal to Rabbit IgG - H&L - Pre-Adsorbed (HRP) at 1/3000 dilution

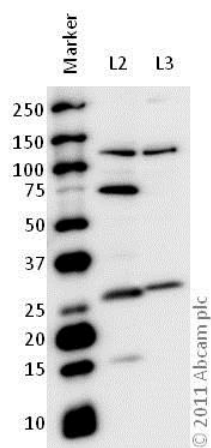
Developed using the ECL technique.

Performed under reducing conditions.

Predicted band size: 25 kDa

Observed band size: 25 kDa

Exposure time: 3 minutes



Western blot - Anti-MASH1/Achaete-scute homolog 1 antibody (ab74065)

All lanes : Anti-MASH1/Achaete-scute homolog 1 antibody (ab74065) at 1 µg/ml

Lane 1 : Marker

Lane 2 : Zebrafish brain homogenate at 20 µg

Lane 3 : Mouse brain homogenate at 20 µg

Secondary

All lanes : Goat polyclonal to Rabbit IgG – H&L – Pre-Adsorbed (HRP) at 1/6000 dilution

Developed using the ECL technique.

Performed under reducing conditions.

Predicted band size: 25 kDa

Observed band size: 26 kDa

Exposure time: 5 minutes

Please note: All products are "FOR RESEARCH USE ONLY. NOT FOR USE IN DIAGNOSTIC PROCEDURES"

Our Abpromise to you: Quality guaranteed and expert technical support

- Replacement or refund for products not performing as stated on the datasheet
- Valid for 12 months from date of delivery
- Response to your inquiry within 24 hours
- We provide support in Chinese, English, French, German, Japanese and Spanish
- Extensive multi-media technical resources to help you
- We investigate all quality concerns to ensure our products perform to the highest standards

If the product does not perform as described on this datasheet, we will offer a refund or replacement. For full details of the Abpromise, please visit <https://www.abcam.cn/abpromise> or contact our technical team.

Terms and conditions

- Guarantee only valid for products bought direct from Abcam or one of our authorized distributors