

Anti-MAPRE1/EB1 antibody [KT51] ab53358

★★★★★ [4 Abreviews](#) [20 References](#) [1 图像](#)

概述

产品名称	Anti-MAPRE1/EB1抗体[KT51]
描述	大鼠单克隆抗体[KT51] to MAPRE1/EB1
宿主	Rat
经测试应用	适用于: IP, WB, ICC, ELISA, ICC/IF, Flow Cyt
种属反应性	与反应: Mouse, Hamster, Human
免疫原	Synthetic peptide. This information is proprietary to Abcam and/or its suppliers.
常规说明	<p>The Life Science industry has been in the grips of a reproducibility crisis for a number of years. Abcam is leading the way in addressing this with our range of recombinant monoclonal antibodies and knockout edited cell lines for gold-standard validation. Please check that this product meets your needs before purchasing.</p> <p>If you have any questions, special requirements or concerns, please send us an inquiry and/or contact our Support team ahead of purchase. Recommended alternatives for this product can be found below, along with publications, customer reviews and Q&As</p>

性能

形式	Liquid
存放说明	Shipped at 4°C. Store at 4°C (stable for up to 12 months). Store at -20°C or -80°C.
存储溶液	Preservative: 0.1% Sodium azide Constituent: PBS
纯度	Protein G purified
克隆	单克隆
克隆编号	KT51
同种型	IgG2a

应用

The Abpromise guarantee **Abpromise™** 承诺保证使用ab53358于以下的经测试应用

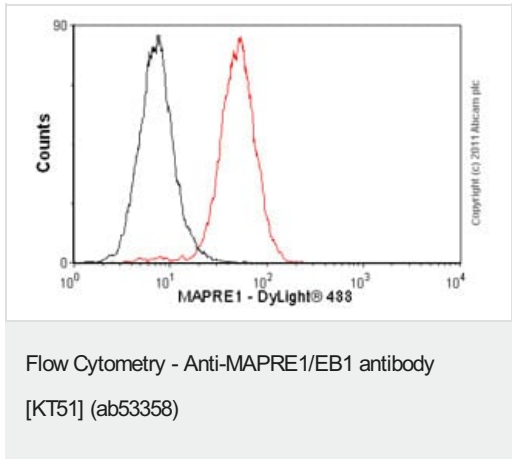
“应用说明”部分 下显示的仅为推荐的起始稀释度;实际最佳的稀释度/浓度应由使用者检定。

应用	Ab评论	说明
IP		Use at an assay dependent concentration.
WB	★★★★★ (2)	Use at an assay dependent concentration.
ICC	★★★★★ (1)	Use at an assay dependent concentration.
ELISA		Use at an assay dependent concentration.
ICC/IF	★★★★★ (1)	Use at an assay dependent concentration.
Flow Cyt		Use 1µg for 10 ⁶ cells. ab18450 - Rat monoclonal IgG2a, is suitable for use as an isotype control with this antibody.

靶标

功能	May be involved in microtubule polymerization, and spindle function by stabilizing microtubules and anchoring them at centrosomes. May play a role in cell migration.
组织特异性	Ubiquitously expressed.
序列相似性	Belongs to the MAPRE family. Contains 1 CH (calponin-homology) domain. Contains 1 EB1 C-terminal domain.
结构域	Composed of two functionally independent domains. The N-terminal domain forms an hydrophobic cleft involved in microtubule binding and the C-terminal is involved in the formation of mutually exclusive complexes with APC and DCTN1.
细胞定位	Cytoplasm > cytoskeleton. Cytoplasm > cytoskeleton > centrosome. Associated with the microtubule network at the growing distal tip of microtubules. Also enriched at the centrosome.

图片



Overlay histogram showing HeLa cells stained with ab53358 (red line). The cells were fixed with 4% paraformaldehyde (10 min) and then permeabilized with 0.1% PBS-Tween for 20 min. The cells were then incubated in 1x PBS / 10% normal goat serum / 0.3M glycine to block non-specific protein-protein interactions. The cells were then incubated with the antibody (ab53358, 1µg/1x10⁶ cells) for 30 min at 22°C. The secondary antibody used was DyLight[®] 488 goat anti-rat IgG (H+L) (**ab98386**) at 1/500 dilution for 30 min at 22°C. Isotype control antibody (black line) was rat IgG2a, kappa monoclonal [aRTK2758] (**ab18450**, 2µg/1x10⁶ cells) used under the same conditions. Acquisition of >5,000 events was performed. This antibody gave a positive signal in HeLa cells fixed with 80% methanol (5 min)/permeabilized in 0.1% PBS-Tween used under

the same conditions.

Please note: All products are "FOR RESEARCH USE ONLY. NOT FOR USE IN DIAGNOSTIC PROCEDURES"

Our Abpromise to you: Quality guaranteed and expert technical support

- Replacement or refund for products not performing as stated on the datasheet
- Valid for 12 months from date of delivery
- Response to your inquiry within 24 hours
- We provide support in Chinese, English, French, German, Japanese and Spanish
- Extensive multi-media technical resources to help you
- We investigate all quality concerns to ensure our products perform to the highest standards

If the product does not perform as described on this datasheet, we will offer a refund or replacement. For full details of the Abpromise, please visit <https://www.abcam.cn/abpromise> or contact our technical team.

Terms and conditions

- Guarantee only valid for products bought direct from Abcam or one of our authorized distributors