

# Anti-MAPRE1/EB1 antibody ab117821

[2 References](#) [3 图像](#)

### 概述

---

产品名称	Anti-MAPRE1/EB1抗体
描述	兔多克隆抗体to MAPRE1/EB1
宿主	Rabbit
经测试应用	适用于: IHC-P
种属反应性	与反应: Mouse, Human 预测可用于: Rat, Rabbit, Goat, Horse, Guinea pig, Cow, Dog, Pig, Chimpanzee, Rhesus monkey, Gorilla, Orangutan 
免疫原	Synthetic peptide corresponding to Human MAPRE1/EB1 aa 200-300. NP_036457.1 Database link: <a href="#">Q15691</a>
阳性对照	Human prostate carcinoma, and Mouse teratoma tissue
常规说明	<p>The Life Science industry has been in the grips of a reproducibility crisis for a number of years. Abcam is leading the way in addressing this with our range of recombinant monoclonal antibodies and knockout edited cell lines for gold-standard validation. Please check that this product meets your needs before purchasing.</p> <p>If you have any questions, special requirements or concerns, please send us an inquiry and/or contact our Support team ahead of purchase. Recommended alternatives for this product can be found below, along with publications, customer reviews and Q&amp;As</p>

### 性能

---

形式	Liquid
存放说明	Shipped at 4°C. Upon delivery aliquot and store at -20°C. Avoid freeze / thaw cycles.
存储溶液	pH: 6.8 Preservative: 0.09% Sodium azide Constituents: 0.1% BSA, 99% Tris buffered saline
纯度	Immunogen affinity purified
克隆	多克隆
同种型	IgG

### 应用

## The Abpromise guarantee

**Abpromise™**承诺保证使用ab117821于以下的经测试应用

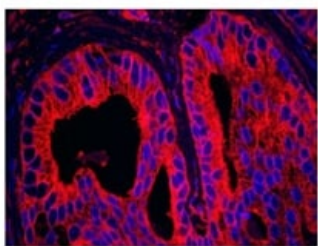
“应用说明”部分下显示的仅为推荐的起始稀释度;实际最佳的稀释度/浓度应由使用者检定。

应用	Ab评论	说明
IHC-P		1/100 - 1/500. ab117821 can also be used for IHC-IF. Epitope exposure is recommended. Epitope exposure with citrate buffer will enhance staining.

## 靶标

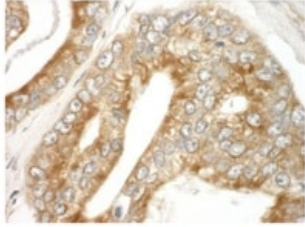
<b>功能</b>	May be involved in microtubule polymerization, and spindle function by stabilizing microtubules and anchoring them at centrosomes. May play a role in cell migration.
<b>组织特异性</b>	Ubiquitously expressed.
<b>序列相似性</b>	Belongs to the MAPRE family. Contains 1 CH (calponin-homology) domain. Contains 1 EB1 C-terminal domain.
<b>结构域</b>	Composed of two functionally independent domains. The N-terminal domain forms an hydrophobic cleft involved in microtubule binding and the C-terminal is involved in the formation of mutually exclusive complexes with APC and DCTN1.
<b>细胞定位</b>	Cytoplasm > cytoskeleton. Cytoplasm > cytoskeleton > centrosome. Associated with the microtubule network at the growing distal tip of microtubules. Also enriched at the centrosome.

## 图片



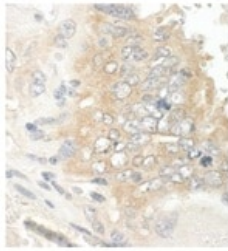
Immunohistochemistry (Formalin/PFA-fixed paraffin-embedded sections) - Anti-MAPRE1/EB1 antibody (ab117821)

Detection of Human MAPRE1/EB1 by Immunohistochemistry.  
Sample: Formalin Fixed Paraffin Embedded section of Human prostate carcinoma. Antibody: ab117821 used at a dilution of 1/100. Detection: Red-fluorescent Goat anti-Rabbit IgG heavy and light chain cross-adsorbed Antibody DyLight 594 Conjugated used at a dilution of 1/100.



Immunohistochemistry (Formalin/PFA-fixed paraffin-embedded sections) - Anti-MAPRE1/EB1 antibody (ab117821)

Immunohistochemical detection of Human MAPRE1/EB1 in paraffin embedded formalin fixed Human prostate carcinoma tissue section using 1/250 ab117821. DAB detection.



Immunohistochemistry (Formalin/PFA-fixed paraffin-embedded sections) - Anti-MAPRE1/EB1 antibody (ab117821)

Immunohistochemical detection of Mouse MAPRE1/EB1 in paraffin embedded formalin fixed Mouse teratoma tissue section using 1/250 ab117821. DAB detection.

**Please note:** All products are "FOR RESEARCH USE ONLY. NOT FOR USE IN DIAGNOSTIC PROCEDURES"

### Our Abpromise to you: Quality guaranteed and expert technical support

---

- Replacement or refund for products not performing as stated on the datasheet
- Valid for 12 months from date of delivery
- Response to your inquiry within 24 hours
- We provide support in Chinese, English, French, German, Japanese and Spanish
- Extensive multi-media technical resources to help you
- We investigate all quality concerns to ensure our products perform to the highest standards

If the product does not perform as described on this datasheet, we will offer a refund or replacement. For full details of the Abpromise, please visit <https://www.abcam.cn/abpromise> or contact our technical team.

### Terms and conditions

---

- Guarantee only valid for products bought direct from Abcam or one of our authorized distributors