


Anti-MAP2K1IP1 antibody [Y130] ab32134

敲除验证
重组
RabMAb

[4 References](#)
[6 图像](#)

概述

产品名称	Anti-MAP2K1IP1抗体[Y130]
描述	兔单克隆抗体[Y130] to MAP2K1IP1
宿主	Rabbit
特异性	ab32134 recognises MP1 (MEK partner-1).
经测试应用	适用于: WB, IHC-P, ICC/IF 不适用于: Flow Cyt
种属反应性	与反应: Human 预测可用于: Mouse 
免疫原	Synthetic peptide. This information is proprietary to Abcam and/or its suppliers.
阳性对照	WB: HeLa and A431 cell lysates. IHC-P: Human breast carcinoma tissue. ICC/IF: MCF7 cells.
常规说明	<p>This product is a recombinant monoclonal antibody, which offers several advantages including:</p> <ul style="list-style-type: none"> - High batch-to-batch consistency and reproducibility - Improved sensitivity and specificity - Long-term security of supply - Animal-free production <p>For more information see here.</p> <p>Our RabMAb[®] technology is a patented hybridoma-based technology for making rabbit monoclonal antibodies. For details on our patents, please refer to RabMAb[®] patents.</p> <p>Rat: We have preliminary internal testing data to indicate this antibody may not react with this species. Please contact us for more information.</p>

性能

形式	Liquid
存放说明	Shipped at 4°C. Upon delivery aliquot and store at -20°C. Avoid freeze / thaw cycles.
存储溶液	pH: 7.20 Preservative: 0.01% Sodium azide Constituents: 49% PBS, 50% Glycerol (glycerin, glycerine), 0.05% BSA
纯度	Protein A purified

克隆	单克隆
克隆编号	Y130
同种型	IgG

应用

The Abpromise guarantee

Abpromise™承诺保证使用ab32134于以下的经测试应用

“应用说明”部分 下显示的仅为推荐的起始稀释度;实际最佳的稀释度/浓度应由使用者检定。

应用	Ab评论	说明
WB		1/10000 - 1/50000. Detects a band of approximately 14 kDa.
IHC-P		Use at an assay dependent concentration. Perform heat mediated antigen retrieval with citrate buffer pH 6 before commencing with IHC staining protocol.
ICC/IF		1/100.

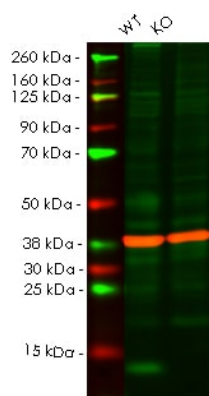
应用说明

Is unsuitable for Flow Cyt.

靶标

功能	As part of the Ragulator complex it is involved in amino acid sensing and activation of mTORC1, a signaling complex promoting cell growth in response to growth factors, energy levels, and amino acids. Activated by amino acids through a mechanism involving the lysosomal V-ATPase, the Ragulator functions as a guanine nucleotide exchange factor activating the small GTPases Rag. Activated Ragulator and Rag GTPases function as a scaffold recruiting mTORC1 to lysosomes where it is in turn activated. Adapter protein that enhances the efficiency of the MAP kinase cascade facilitating the activation of MAPK2.
序列相似性	Belongs to the LAMTOR3 family.
细胞定位	Late endosome membrane.

图片



Western blot - Anti-MAP2K1IP1 antibody [Y130]
(ab32134)

All lanes : Anti-MAP2K1IP1 antibody [Y130] (ab32134) at 1/50000 dilution

Lane 1 : Wild-type HeLa cell lysate

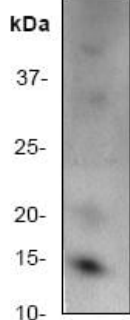
Lane 2 : MAP2K1IP1 knockout HeLa cell lysate

Lysates/proteins at 20 µg per lane.

Performed under reducing conditions.

Lanes 1-2: Merged signal (red and green). Green - ab32134 observed at 14 kDa. Red - loading control **ab8245** observed at 37 kDa.

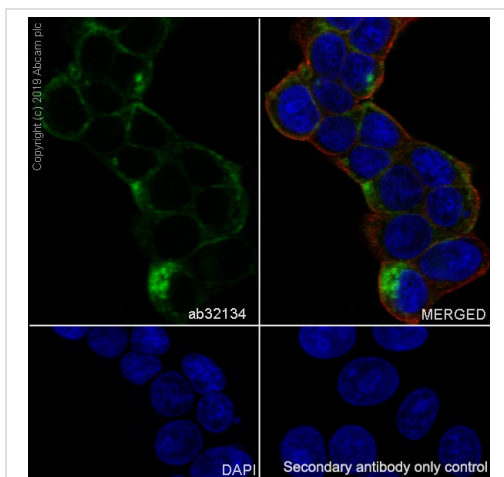
ab32134 Anti-MAP2K1IP1 antibody [Y130] was shown to specifically react with MAP2K1IP1 in wild-type HeLa cells. Loss of signal was observed when knockout cell line **ab265624** (knockout cell lysate **ab258021**) was used. Wild-type and MAP2K1IP1 knockout samples were subjected to SDS-PAGE. ab32134 and Anti-GAPDH antibody [6C5] - Loading Control (**ab8245**) were incubated overnight at 4°C at 1 in 50000 dilution and 1 in 20000 dilution respectively. Blots were developed with Goat anti-Rabbit IgG H&L (IRDye® 800CW) preadsorbed (**ab216773**) and Goat anti-Mouse IgG H&L (IRDye® 680RD) preadsorbed (**ab216776**) secondary antibodies at 1 in 20000 dilution for 1 hour at room temperature before imaging.



Western blot - Anti-MAP2K1IP1 antibody [Y130]
(ab32134)

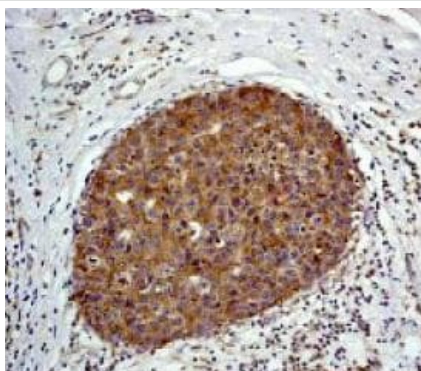
Anti-MAP2K1IP1 antibody [Y130] (ab32134) at 1/50000 dilution + A431 cell lysate

Observed band size: 14 kDa



Immunocytochemistry/ Immunofluorescence - Anti-MAP2K1IP1 antibody [Y130] (ab32134)

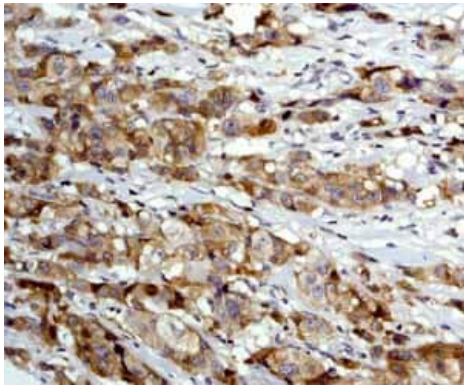
Immunocytochemistry/ Immunofluorescence analysis of MCF7 (human breast adenocarcinoma epithelial cell) cells labeling MAP2K1IP1 with purified ab32134 at 1/100 dilution (10 µg/mL). Cells were fixed in 100% Methanol and permeabilized with None. Cells were counterstained with **ab195889** Anti-alpha Tubulin antibody [DM1A] - Microtubule Marker (Alexa Fluor® 594) 1/200 (2.5 µg/mL). Goat anti rabbit IgG (Alexa Fluor® 488, **ab150077**) was used as the secondary antibody at 1/1000 (2 µg/mL) dilution. DAPI (blue) was used as nuclear counterstain. **ab195889** Anti-alpha Tubulin antibody [DM1A] - Microtubule Marker (Alexa Fluor® 594) 1/200 (2.5 µg/mL) was used as the secondary antibody only control.



Immunohistochemistry (Formalin/PFA-fixed paraffin-embedded sections) - Anti-MAP2K1IP1 antibody [Y130] (ab32134)

ab32134, staining human breast carcinoma by immunohistochemistry, Paraffin embedded tissue

Perform heat mediated antigen retrieval with citrate buffer pH 6 before commencing with IHC staining protocol.



ab32134 showing positive staining in Breast carcinoma tissue.

Perform heat mediated antigen retrieval with citrate buffer pH 6 before commencing with IHC staining protocol.

Immunohistochemistry (Formalin/PFA-fixed paraffin-embedded sections) - Anti-MAP2K1IP1 antibody [Y130] (ab32134)

Why choose a recombinant antibody?



Research with confidence
Consistent and reproducible results



Long-term and scalable supply
Recombinant technology



Success from the first experiment
Confirmed specificity



Ethical standards compliant
Animal-free production

Anti-MAP2K1IP1 antibody [Y130] (ab32134)

Please note: All products are "FOR RESEARCH USE ONLY. NOT FOR USE IN DIAGNOSTIC PROCEDURES"

Our Abpromise to you: Quality guaranteed and expert technical support

- Replacement or refund for products not performing as stated on the datasheet
- Valid for 12 months from date of delivery
- Response to your inquiry within 24 hours
- We provide support in Chinese, English, French, German, Japanese and Spanish
- Extensive multi-media technical resources to help you
- We investigate all quality concerns to ensure our products perform to the highest standards

If the product does not perform as described on this datasheet, we will offer a refund or replacement. For full details of the Abpromise, please visit <https://www.abcam.cn/abpromise> or contact our technical team.

Terms and conditions

- Guarantee only valid for products bought direct from Abcam or one of our authorized distributors