

Anti-Mannose Receptor antibody [15-2] ab8918

★★★★★ [11 Abreviews](#) [71 References](#) [4 图像](#)

概述

产品名称	Anti-Mannose Receptor抗体[15-2]
描述	小鼠单克隆抗体[15-2] to Mannose Receptor
宿主	Mouse
经测试应用	适用于: IHC-Fr 不适用于: IHC-P
种属反应性	与反应: Human
免疫原	Purified human mannose receptor from human placental tissue.
表位	Stains extracellular domain of Mannose Receptor.
阳性对照	Macrophages IHC: liver endothelial cells and Kupffer cells, spermatids, spermatozoa
常规说明	<p>The Mannose Receptor (MR), a member of the vertebrate C-type lectin family, is a pattern recognition receptor that is involved in both innate and adaptive immunity. The 180 kDa transmembrane protein consists of 5 domains: an amino-terminal cysteine-rich region, a fibronectin type II repeat, a series of eight tandem lectin-like carbohydrate recognition domains (responsible for the recognition of mannose and fucose), a transmembrane domain, and an intracellular carboxy-terminal tail. The structure is shared by the family of multi lectin mannose receptors: the phospholipase A2-receptor, DEC 205 and the novel C-type lectin receptor (mannose receptor X). The MR recognises a wide range of gram positive and gram negative bacteria, yeasts, parasites and mycobacteria. The MR has also been shown to bind and internalize tissue-type plasminogen activator. MR's are present on monocytes and dendritic cells (DC) and are presumed to play a role in innate and adaptive immunity, the latter via processing by DC. The expression of MR as observed in immunohistology is present on tissue macrophages, dendritic cells, a subpopulation of endothelial cells, Kupffer cells and sperm cells.</p> <p>The Life Science industry has been in the grips of a reproducibility crisis for a number of years. Abcam is leading the way in addressing this with our range of recombinant monoclonal antibodies and knockout edited cell lines for gold-standard validation. Please check that this product meets your needs before purchasing.</p> <p>If you have any questions, special requirements or concerns, please send us an inquiry and/or contact our Support team ahead of purchase. Recommended alternatives for this product can be found below, along with publications, customer reviews and Q&As</p>

性能

形式	Liquid
存放说明	Shipped at 4°C. Upon delivery aliquot and store at -20°C. Avoid freeze / thaw cycles.
存储溶液	Constituents: PBS, 0.1% BSA
纯度	Protein G purified
纯化说明	0.2 µm filtered antibody solution
Primary antibody说明	The Mannose Receptor (MR), a member of the vertebrate C-type lectin family, is a pattern recognition receptor that is involved in both innate and adaptive immunity. The 180 kDa transmembrane protein consists of 5 domains: an amino-terminal cysteine-rich region, a fibronectin type II repeat, a series of eight tandem lectin-like carbohydrate recognition domains (responsible for the recognition of mannose and fucose), a transmembrane domain, and an intracellular carboxy-terminal tail. The structure is shared by the family of multi lectin mannose receptors: the phospholipase A2-receptor, DEC 205 and the novel C-type lectin receptor (mannose receptor X). The MR recognises a wide range of gram positive and gram negative bacteria, yeasts, parasites and mycobacteria. The MR has also been shown to bind and internalize tissue-type plasminogen activator. MR's are present on monocytes and dendritic cells (DC) and are presumed to play a role in innate and adaptive immunity, the latter via processing by DC. The expression of MR as observed in immunohistology is present on tissue macrophages, dendritic cells, a subpopulation of endothelial cells, Kupffer cells and sperm cells.
克隆	单克隆
克隆编号	15-2
骨髓瘤	unknown
同种型	IgG1
轻链类型	unknown

应用

The Abpromise guarantee **Abpromise™**承诺保证使用ab8918于以下的经测试应用

“应用说明”部分 下显示的仅为推荐的起始稀释度;实际最佳的稀释度/浓度应由使用者检定。

应用	Ab评论	说明
IHC-Fr	★★★★★ (6)	1/50.

应用说明 Is unsuitable for IHC-P.

靶标

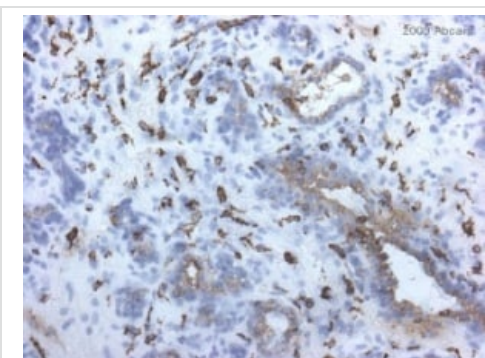
功能	Mediates the endocytosis of glycoproteins by macrophages. Binds both sulfated and non-sulfated polysaccharide chains. Acts as phagocytic receptor for bacteria, fungi and other pathogens.
序列相似性	Contains 8 C-type lectin domains. Contains 1 fibronectin type-II domain. Contains 1 ricin B-type lectin domain.
细胞定位	Membrane.

图片



Immunohistochemistry (Frozen sections) - Anti-Mannose Receptor antibody [15-2] (ab8918)

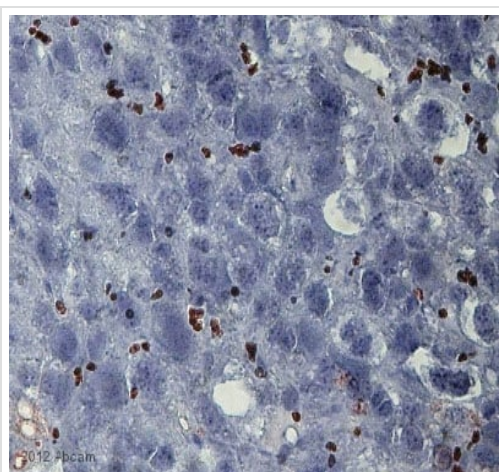
Frozen sections of human tonsil. ab8918 was used in a dilution of 1/25 and shows staining of endothelia of lymph vessels.



Immunohistochemistry (Frozen sections) - Anti-Mannose Receptor antibody [15-2] (ab8918)

This image is a courtesy of Pat Bell

ab8918 staining Mannose Receptor in human mammary gland tissue section by Immunohistochemistry (Frozen sections). Tissue samples were fixed with 70% Ethanol and blocking for 10 minutes at RT was performed. The sample was incubated with primary antibody (1/10) for 1 hour. A HRP-conjugated mouse polyclonal to mouse IgG was used undiluted as secondary antibody.



Immunohistochemistry (Frozen sections) - Anti-Mannose Receptor antibody [15-2] (ab8918)

This image is courtesy of an anonymous Abreview

Immunohistochemical analysis of murine uterus tissue sections, staining Mannose Receptor with ab8918.

Tissue was fixed with paraformaldehyde and blocked with 3% BSA for 30 minutes at room temperature. Samples were incubated with primary antibody (1/40 in 1% BSA) for 1.5 hours. An undiluted HRP-conjugated rabbit anti-mouse polyclonal IgG was used as the secondary antibody.



ab8918 staining Mannose Receptor in human endometriosis tissue sections by Immunohistochemistry (IHC-Fr - frozen sections). Tissue was fixed with acetone and blocked with 10% serum for 1 hour at 22°C. Samples were incubated with primary antibody (1/10 in PBS + 1% NGS) for 16 hours at 4°C. An undiluted HRP-conjugated goat anti-mouse IgG polyclonal was used as the secondary antibody.

Please note: All products are "FOR RESEARCH USE ONLY. NOT FOR USE IN DIAGNOSTIC PROCEDURES"

Our Abpromise to you: Quality guaranteed and expert technical support

- Replacement or refund for products not performing as stated on the datasheet
- Valid for 12 months from date of delivery
- Response to your inquiry within 24 hours
- We provide support in Chinese, English, French, German, Japanese and Spanish
- Extensive multi-media technical resources to help you
- We investigate all quality concerns to ensure our products perform to the highest standards

If the product does not perform as described on this datasheet, we will offer a refund or replacement. For full details of the Abpromise, please visit <https://www.abcam.cn/abpromise> or contact our technical team.

Terms and conditions

- Guarantee only valid for products bought direct from Abcam or one of our authorized distributors