

Anti-Mannan Binding Lectin/MBL antibody [3B6] ab23457

★★★★★ [2 Abreviews](#) [17 References](#) [3 图像](#)

概述

产品名称	Anti-Mannan Binding Lectin/MBL 抗体[3B6]
描述	小鼠单克隆抗体[3B6] to Mannan Binding Lectin/MBL
宿主	Mouse
特异性	ab23457 is specific for MBL from human serum or plasma. In Western blotting, ab121075 reacts with Human MBL in both its oligomerized state.
经测试应用	适用于: IHC-P
种属反应性	与反应: Human
免疫原	Full length native protein (purified) corresponding to Human Mannan Binding Lectin/MBL. Human MBL purified from Human donor plasma.
表位	The epitope is on the head-neck region of the MBL protein chain.
阳性对照	Human liver, Human cancerous liver and Human brain tissues.
常规说明	<p>The Life Science industry has been in the grips of a reproducibility crisis for a number of years. Abcam is leading the way in addressing this with our range of recombinant monoclonal antibodies and knockout edited cell lines for gold-standard validation. Please check that this product meets your needs before purchasing.</p> <p>If you have any questions, special requirements or concerns, please send us an inquiry and/or contact our Support team ahead of purchase. Recommended alternatives for this product can be found below, along with publications, customer reviews and Q&As</p>

性能

形式	Liquid
存放说明	Shipped at 4°C. Store at +4°C short term (1-2 weeks). Upon delivery aliquot. Store at -20°C or -80°C. Avoid freeze / thaw cycle.
存储溶液	<p>pH: 7.40</p> <p>Preservative: 0.097% Sodium azide</p> <p>Constituents: 0.0268% PBS, 2.9% Sodium chloride</p>
纯度	Protein A purified
克隆	单克隆
克隆编号	3B6

骨髓瘤	x63-Ag8.653
同种型	IgG1
轻链类型	kappa

应用

The Abpromise guarantee

Abpromise™承诺保证使用ab23457于以下的经测试应用

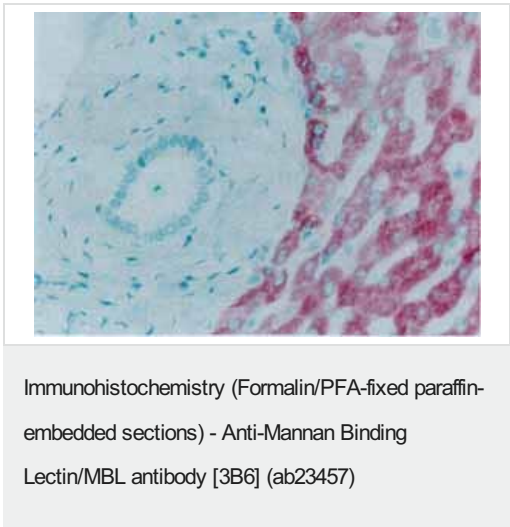
“应用说明”部分 下显示的仅为推荐的起始稀释度;实际最佳的稀释度/浓度应由使用者检定。

应用	Ab评论	说明
IHC-P	★★★★★ (2)	1/250.

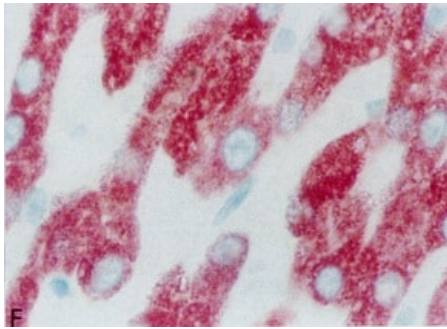
靶标

功能	Calcium-dependent lectin involved in innate immune defense. Binds mannose, fucose and N-acetylglucosamine on different microorganisms and activates the lectin complement pathway. Binds to late apoptotic cells, as well as to apoptotic blebs and to necrotic cells, but not to early apoptotic cells, facilitating their uptake by macrophages. May bind DNA.
组织特异性	Plasma protein produced mainly in the liver.
疾病相关	Note=There is an association between low levels of MBL2 and a defect of opsonization which results in susceptibility to frequent and chronic infections.
序列相似性	Contains 1 C-type lectin domain. Contains 1 collagen-like domain.
细胞定位	Secreted.

图片

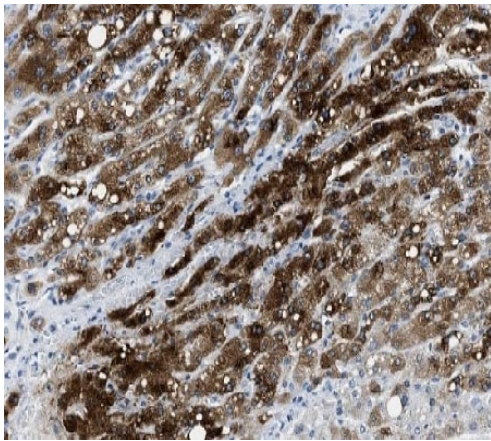


ab23457 at 1 mg/ml staining human liver by IHC-P



ab23457 staining MBL in Paraffin-embedded Human Liver tissue by Immunohistochemistry.

Immunohistochemistry (Formalin/PFA-fixed paraffin-embedded sections) - Anti-Mannan Binding Lectin/MBL antibody [3B6] (ab23457)



ab23457 staining MBL in Paraffin-embedded Human cancerous liver tissue by Immunohistochemistry.

Immunohistochemistry (Formalin/PFA-fixed paraffin-embedded sections) - Anti-Mannan Binding Lectin/MBL antibody [3B6] (ab23457)

Please note: All products are "FOR RESEARCH USE ONLY. NOT FOR USE IN DIAGNOSTIC PROCEDURES"

Our Abpromise to you: Quality guaranteed and expert technical support

- Replacement or refund for products not performing as stated on the datasheet
- Valid for 12 months from date of delivery
- Response to your inquiry within 24 hours
- We provide support in Chinese, English, French, German, Japanese and Spanish
- Extensive multi-media technical resources to help you
- We investigate all quality concerns to ensure our products perform to the highest standards

If the product does not perform as described on this datasheet, we will offer a refund or replacement. For full details of the Abpromise, please visit <https://www.abcam.cn/abpromise> or contact our technical team.

Terms and conditions

- Guarantee only valid for products bought direct from Abcam or one of our authorized distributors