


Anti-MAML1 antibody ab70488

1 图像

概述	
产品名称	Anti-MAML1抗体
描述	兔多克隆抗体to MAML1
宿主	Rabbit
特异性	We have data to indicate that this antibody may not cross react with Mouse. However, this has not been conclusively tested and expression levels may vary in certain cell lines/tissues.
经测试应用	适用于: WB
种属反应性	与反应: Human 预测可用于: Chimpanzee 
免疫原	Synthetic peptide, corresponding to a region between amino acids 75-125 of Human MAML1
阳性对照	Whole cell lysate from HeLa cells
常规说明	<p>The Life Science industry has been in the grips of a reproducibility crisis for a number of years. Abcam is leading the way in addressing this with our range of recombinant monoclonal antibodies and knockout edited cell lines for gold-standard validation. Please check that this product meets your needs before purchasing.</p> <p>If you have any questions, special requirements or concerns, please send us an inquiry and/or contact our Support team ahead of purchase. Recommended alternatives for this product can be found below, along with publications, customer reviews and Q&As</p>
性能	
形式	Liquid
存放说明	Shipped at 4°C. Upon delivery aliquot and store at -20°C. Avoid freeze / thaw cycles.
存储溶液	pH: 7 Preservative: 0.09% Sodium azide Constituents: 1.815% Tris, 1.764% Sodium citrate, 0.021% PBS
纯度	Immunogen affinity purified
克隆	多克隆
同种型	IgG

The Abpromise guarantee **Abpromise™**承诺保证使用ab70488于以下的经测试应用

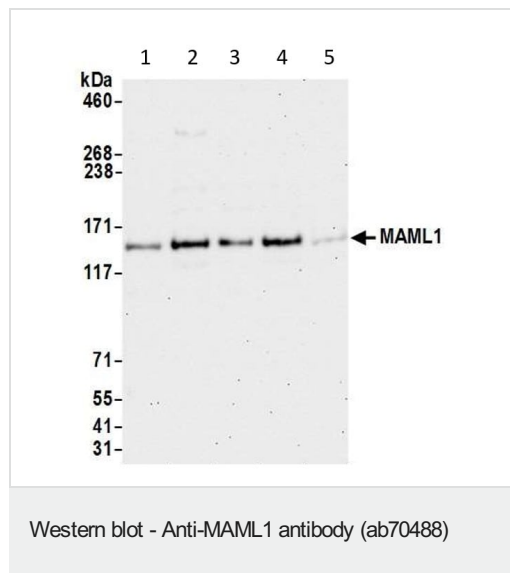
“应用说明”部分 下显示的仅为推荐的起始稀释度;实际最佳的稀释度/浓度应由使用者检定。

应用	Ab评论	说明
WB		1/1000 - 1/10000. Predicted molecular weight: 108 kDa.

靶标

功能	Acts as a transcriptional coactivator for NOTCH proteins. Has been shown to amplify NOTCH-induced transcription of HES1. Enhances phosphorylation and proteolytic turnover of the NOTCH intracellular domain in the nucleus through interaction with CDK8. Binds to CREBBP/CBP which promotes nucleosome acetylation at NOTCH enhancers and activates transcription. Induces phosphorylation and localization of CREBBP to nuclear foci. Plays a role in hematopoietic development by regulating NOTCH-mediated lymphoid cell fate decisions.
组织特异性	Widely expressed with highest levels in heart, pancreas, peripheral blood leukocytes and spleen.
序列相似性	Belongs to the mastermind family.
结构域	The C-terminal region is required for transcriptional activation.
细胞定位	Nucleus speckle. Nuclear, in a punctate manner.

图片



All lanes : Anti-MAML1 antibody (ab70488) at 0.04 µg/ml

- Lane 1 :** HeLa whole cell lysate
- Lane 2 :** HEK293T whole cell lysate
- Lane 3 :** A-549 whole cell lysate
- Lane 4 :** MCF-7 whole cell lysate
- Lane 5 :** GaMG whole cell lysate

Lysates/proteins at 50 µg per lane.

Predicted band size: 108 kDa

Please note: All products are "FOR RESEARCH USE ONLY. NOT FOR USE IN DIAGNOSTIC PROCEDURES"

Our Abpromise to you: Quality guaranteed and expert technical support

- Replacement or refund for products not performing as stated on the datasheet
- Valid for 12 months from date of delivery

- Response to your inquiry within 24 hours
- We provide support in Chinese, English, French, German, Japanese and Spanish
- Extensive multi-media technical resources to help you
- We investigate all quality concerns to ensure our products perform to the highest standards

If the product does not perform as described on this datasheet, we will offer a refund or replacement. For full details of the Abpromise, please visit <https://www.abcam.cn/abpromise> or contact our technical team.

Terms and conditions

- Guarantee only valid for products bought direct from Abcam or one of our authorized distributors