



Anti-MALT1/MLT antibody ab118393

1 图像

概述

产品名称	Anti-MALT1/MLT抗体
描述	山羊多克隆抗体to MALT1/MLT
宿主	Goat
特异性	ab118393 is expected to recognize reported isoform 2 (XP_225927.5) only.
经测试应用	适用于: WB
种属反应性	与反应: Mouse
免疫原	Synthetic peptide corresponding to Rat MALT1/MLT aa 300-400 (internal sequence) (Cysteine residue). Database link: XP_225927.5
	 Run BLAST with  Run BLAST with
阳性对照	Rat and Mouse kidney lysates.
常规说明	<p>The Life Science industry has been in the grips of a reproducibility crisis for a number of years. Abcam is leading the way in addressing this with our range of recombinant monoclonal antibodies and knockout edited cell lines for gold-standard validation. Please check that this product meets your needs before purchasing.</p> <p>If you have any questions, special requirements or concerns, please send us an inquiry and/or contact our Support team ahead of purchase. Recommended alternatives for this product can be found below, along with publications, customer reviews and Q&As</p>

性能

形式	Liquid
存放说明	Shipped at 4°C. Upon delivery aliquot and store at -20°C. Avoid repeated freeze / thaw cycles.
存储溶液	pH: 7.30 Preservative: 0.02% Sodium azide Constituents: 99% Tris buffered saline, 0.5% BSA
纯度	Immunogen affinity purified
纯化说明	ab118393 is purified from Goat serum by ammonium sulphate precipitation followed by antigen affinity chromatography using the immunizing peptide.
克隆	多克隆
同种型	IgG

应用

The Abpromise guarantee

Abpromise™ 承诺保证使用 ab118393 于以下的经测试应用

“应用说明”部分 下显示的仅为推荐的起始稀释度;实际最佳的稀释度/浓度应由使用者检定。

应用	Ab评论	说明
WB		Use a concentration of 1 - 3 µg/ml. Detects a band of approximately 100 kDa (predicted molecular weight: 92 kDa). 1 hour primary incubation is recommended for this product.

靶标

功能

Enhances BCL10-induced activation of NF-kappa-B. Involved in nuclear export of BCL10. Binds to TRAF6, inducing TRAF6 oligomerization and activation of its ligase activity. Has ubiquitin ligase activity. MALT1-dependent BCL10 cleavage plays an important role in T-cell antigen receptor-induced integrin adhesion.

组织特异性

Highly expressed in peripheral blood mononuclear cells. Detected at lower levels in bone marrow, thymus and lymph node, and at very low levels in colon and lung.

疾病相关

Note=A chromosomal aberration involving MALT1 is recurrent in low-grade mucosa-associated lymphoid tissue (MALT lymphoma). Translocation t(11;18)(q21;q21) with BIRC2. This translocation is found in approximately 50% of cytogenetically abnormal low-grade MALT lymphoma.

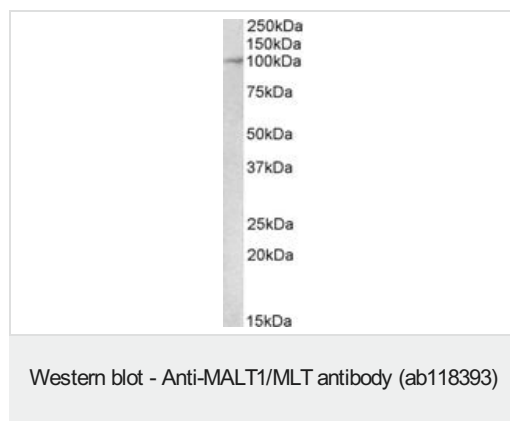
序列相似性

Belongs to the peptidase C14B family.
Contains 1 death domain.
Contains 2 Ig-like C2-type (immunoglobulin-like) domains.

细胞定位

Cytoplasm > perinuclear region. Nucleus. Shuttles between the nucleus and cytoplasm. Found in perinuclear structures together with BCL10.

图片



Anti-MALT1/MLT antibody (ab118393) at 2 µg/ml (for 1 hour) +
Mouse Kidney lysate (in RIPA buffer) at 35 µg

Developed using the ECL technique.

Predicted band size: 92 kDa

Please note: All products are "FOR RESEARCH USE ONLY. NOT FOR USE IN DIAGNOSTIC PROCEDURES"

Our Abpromise to you: Quality guaranteed and expert technical support

- Replacement or refund for products not performing as stated on the datasheet
- Valid for 12 months from date of delivery
- Response to your inquiry within 24 hours

- We provide support in Chinese, English, French, German, Japanese and Spanish
- Extensive multi-media technical resources to help you
- We investigate all quality concerns to ensure our products perform to the highest standards

If the product does not perform as described on this datasheet, we will offer a refund or replacement. For full details of the Abpromise, please visit <https://www.abcam.cn/abpromise> or contact our technical team.

Terms and conditions

- Guarantee only valid for products bought direct from Abcam or one of our authorized distributors