




Anti-MACF1 antibody ab117418

7 References 1 图像

概述	
产品名称	Anti-MACF1抗体
描述	兔多克隆抗体to MACF1
宿主	Rabbit
经测试应用	适用于: IHC-P, ICC/IF, WB, IP, ELISA
种属反应性	与反应: Mouse 预测可用于: Rat 
免疫原	Synthetic peptide corresponding to Mouse MACF1 aa 3650-3850. Database link: Q9QXZ0 <div> Run BLAST with  Run BLAST with</div>
常规说明	<p>The Life Science industry has been in the grips of a reproducibility crisis for a number of years. Abcam is leading the way in addressing this with our range of recombinant monoclonal antibodies and knockout edited cell lines for gold-standard validation. Please check that this product meets your needs before purchasing.</p> <p>If you have any questions, special requirements or concerns, please send us an inquiry and/or contact our Support team ahead of purchase. Recommended alternatives for this product can be found below, along with publications, customer reviews and Q&As</p>
性能	
形式	Liquid
存放说明	Shipped at 4°C. Upon delivery aliquot and store at -20°C. Avoid repeated freeze / thaw cycles.
存储溶液	Constituent: Proprietary component
纯度	Immunogen affinity purified
克隆	多克隆
同种型	IgG
应用	

The Abpromise guarantee [Abpromise™](#)承诺保证使用ab117418于以下的经测试应用

“应用说明”部分 下显示的仅为推荐的起始稀释度;实际最佳的稀释度/浓度应由使用者检定。

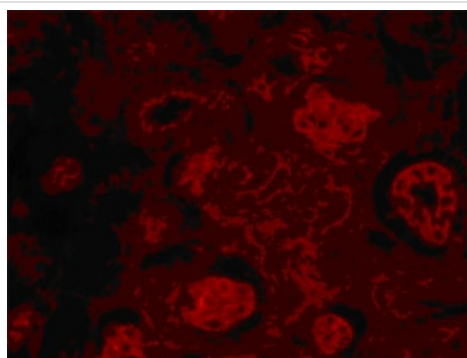
应用	Ab评论	说明
IHC-P		1/250.
ICC/IF		1/250.
WB		1/500. Predicted molecular weight: 838 kDa.
IP		1/200.
ELISA		1/10000.

靶标

相关性 Microtubule-actin crosslinking factor 1 (MACF1/ACF7) belongs to spectraplakins family of proteins which also includes mammalian Bpag1/dystonin, Drosophila Short Stop (Shot) and Caenorhabditis elegans Vab-10. These are large actin-microtubule linker molecules that are essential for various biological processes such as neuronal degeneration, wound healing, gastrulation. MACF1, located on mouse chromosome 4D2.2, was found to play an important role during neurogenesis- it was shown that MACF1 regulates the organization of neuronal microtubules which is essential for axon extension. Furthermore, MACF1 is required in controlling focal adhesion assembly and dynamics. MACF1 behaves as an actin-regulated ATPase and it has the ability to target microtubules that track along F-actin to focal adhesions. MACF1 was also implicated in regulating filopodia formation.

细胞定位 Cytoplasmic, microtubule. Plasma membrane. Golgi apparatus.

图片



ab117418 at 1/250 dilution staining MACF1 in paraformaldehyde fixed Mouse kidney tissue by Immunofluorescence. Antigen retrieval was performed in a pressure cooker for 15 minutes.

Immunohistochemistry (Formalin/PFA-fixed paraffin-embedded sections) - Anti-MACF1 antibody (ab117418)

Please note: All products are "FOR RESEARCH USE ONLY. NOT FOR USE IN DIAGNOSTIC PROCEDURES"

Our Abpromise to you: Quality guaranteed and expert technical support

- Replacement or refund for products not performing as stated on the datasheet
- Valid for 12 months from date of delivery
- Response to your inquiry within 24 hours
- We provide support in Chinese, English, French, German, Japanese and Spanish
- Extensive multi-media technical resources to help you
- We investigate all quality concerns to ensure our products perform to the highest standards

If the product does not perform as described on this datasheet, we will offer a refund or replacement. For full details of the Abpromise, please visit <https://www.abcam.cn/abpromise> or contact our technical team.

Terms and conditions

- Guarantee only valid for products bought direct from Abcam or one of our authorized distributors