


Anti-M-CSF antibody ab99178

★★★★★ [3 Abreviews](#) [8 References](#) [4 图像](#)

概述

产品名称	Anti-M-CSF抗体
描述	兔多克隆抗体to M-CSF
宿主	Rabbit
经测试应用	适用于: IHC-P, WB
种属反应性	与反应: Mouse, Human 预测可用于: Dog, Pig, Macaque monkey, Gorilla 
免疫原	Synthetic peptide. This information is proprietary to Abcam and/or its suppliers.
阳性对照	This antibody gave a positive signal in the following human tissue lysates: Bone Marrow; Spleen; Thymus; Tonsil. It also gave a positive result in FFPE human tonsil tissue sections.
常规说明	<p>The Life Science industry has been in the grips of a reproducibility crisis for a number of years. Abcam is leading the way in addressing this with our range of recombinant monoclonal antibodies and knockout edited cell lines for gold-standard validation. Please check that this product meets your needs before purchasing.</p> <p>If you have any questions, special requirements or concerns, please send us an inquiry and/or contact our Support team ahead of purchase. Recommended alternatives for this product can be found below, along with publications, customer reviews and Q&As</p>

性能

形式	Liquid
存放说明	Shipped at 4°C. Store at +4°C short term (1-2 weeks). Upon delivery aliquot. Store at -20°C or -80°C. Avoid freeze / thaw cycle.
存储溶液	pH: 7.40 Preservative: 0.02% Sodium azide Constituent: PBS Batches of this product that have a concentration < 1mg/ml may have BSA added as a stabilising agent. If you would like information about the formulation of a specific lot, please contact our scientific support team who will be happy to help.
纯度	Immunogen affinity purified
克隆	多克隆

同种型

IgG

应用

The Abpromise guarantee

Abpromise™承诺保证使用ab99178于以下的经测试应用

“应用说明”部分 下显示的仅为推荐的起始稀释度;实际最佳的稀释度/浓度应由使用者检定。

应用	Ab评论	说明
IHC-P	★★★★★ (2)	Use a concentration of 10 µg/ml. Perform heat mediated antigen retrieval before commencing with IHC staining protocol.
WB		Use a concentration of 1 µg/ml. Detects a band of approximately 70 kDa (predicted molecular weight: 60 kDa).

靶标

功能

Granulocyte/macrophage colony-stimulating factors are cytokines that act in hematopoiesis by controlling the production, differentiation, and function of 2 related white cell populations of the blood, the granulocytes and the monocytes-macrophages. CSF-1 induces cells of the monocyte/macrophage lineage. It plays a role in immunological defenses, bone metabolism, lipoproteins clearance, fertility and pregnancy.

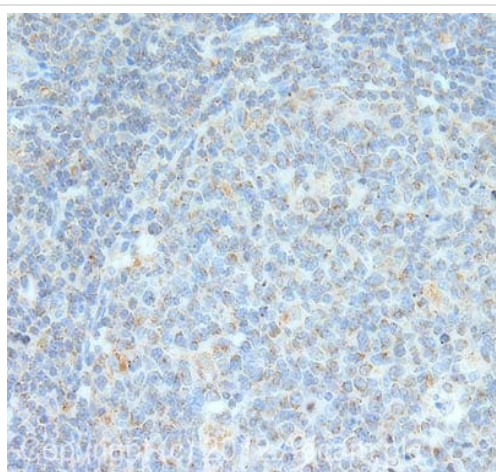
翻译后修饰

Glycosylation and proteolytic cleavage yield different soluble forms. A high molecular weight soluble form is a proteoglycan containing chondroitin sulfate.
Isoform 1 is N- and O-glycosylated. Isoform 3 is N-glycosylated.

细胞定位

Cell membrane and Secreted > extracellular space.

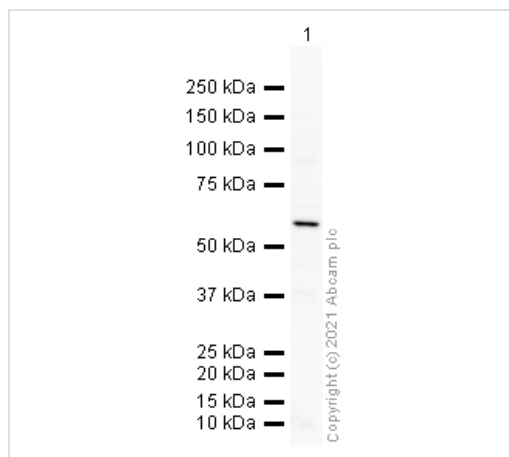
图片



Immunohistochemistry (Formalin/PFA-fixed paraffin-embedded sections) - Anti-M-CSF antibody (ab99178)

IHC image of MCSF staining in human tonsil formalin fixed paraffin embedded tissue section, performed on a Leica Bond™ system using the standard protocol F. The section was pre-treated using heat mediated antigen retrieval with sodium citrate buffer (pH6, epitope retrieval solution 1) for 20 mins. The section was then incubated with ab99178, 10µg/ml, for 15 mins at room temperature and detected using an HRP conjugated compact polymer system. DAB was used as the chromogen. The section was then counterstained with haematoxylin and mounted with DPX.

For other IHC staining systems (automated and non-automated) customers should optimize variable parameters such as antigen retrieval conditions, primary antibody concentration and antibody incubation times.



Western blot - Anti-M-CSF antibody (ab99178)

Anti-M-CSF antibody (ab99178) at 1 µg/ml + Mouse Spleen lysate
at 10 µg

Secondary

Goat Anti-Rabbit IgG H&L (HRP) at 1/50000 dilution

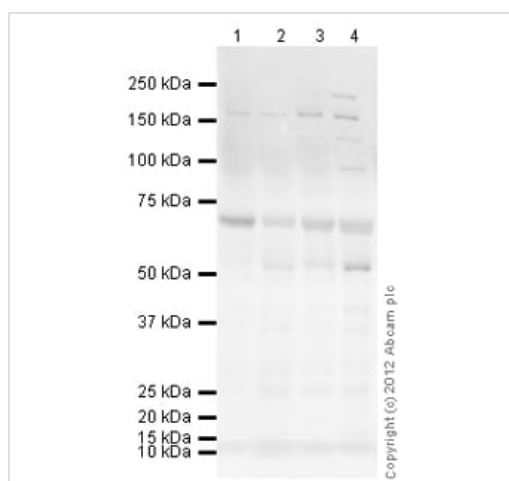
Predicted band size: 60 kDa

Observed band size: 70 kDa

Exposure time: 8 minutes

Blocking buffer: 2% BSA

Gel type: MOPS



Western blot - Anti-M-CSF antibody (ab99178)

All lanes : Anti-M-CSF antibody (ab99178) at 1 µg/ml

Lane 1 : Bone Marrow (Human) Tissue Lysate - adult normal tissue

Lane 2 : Human spleen tissue lysate - total protein ([ab296999](#))

Lane 3 : Human thymus tissue lysate - total protein ([ab30146](#))

Lane 4 : Tonsil (Human) Tissue Lysate

Lysates/proteins at 10 µg per lane.

Secondary

All lanes : Goat Anti-Rabbit IgG H&L (HRP) preadsorbed
([ab97080](#)) at 1/5000 dilution

Developed using the ECL technique.

Performed under reducing conditions.

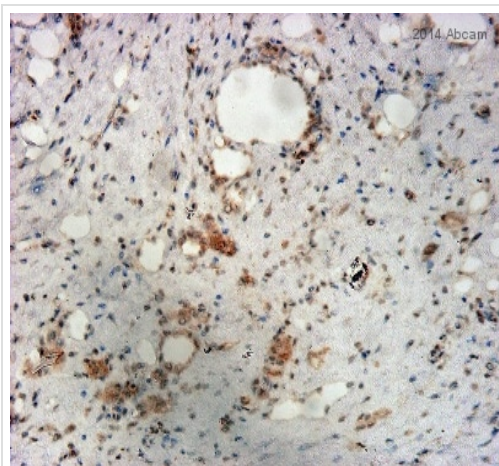
Predicted band size: 60 kDa

Observed band size: 70 kDa

Additional bands at: 170 kDa, 52 kDa (possible cleavage
fragment), 98 kDa. We are unsure as to the identity of these extra
bands.

Exposure time: 8 minutes

MCSF contains a number of potential glycosylation sites (SwissProt) which may explain its migration at a higher molecular weight than predicted.



Immunohistochemistry (Formalin/PFA-fixed paraffin-embedded sections) - Anti-M-CSF antibody (ab99178)

This image is courtesy of an anonymous Abreview

ab99178 staining MCSF in mouse skin wound tissue sections by Immunohistochemistry (IHC-P - paraformaldehyde-fixed, paraffin-embedded sections). Tissue was fixed with paraformaldehyde, permeabilized with 0.1% Triton X-100 for 10 minutes and blocked with 1% BSA for 30 minutes at 25°C; antigen retrieval was by heat mediation in a citrate-EDTA buffer. Samples were incubated with primary antibody (1/100 in TBS pH 7.6) for 1 hour at 25°C. A Biotin-conjugated donkey anti-rabbit IgG (H+L) polyclonal (1/300) was used as the secondary antibody.

Please note: All products are "FOR RESEARCH USE ONLY. NOT FOR USE IN DIAGNOSTIC PROCEDURES"

Our Abpromise to you: Quality guaranteed and expert technical support

- Replacement or refund for products not performing as stated on the datasheet
- Valid for 12 months from date of delivery
- Response to your inquiry within 24 hours
- We provide support in Chinese, English, French, German, Japanese and Spanish
- Extensive multi-media technical resources to help you
- We investigate all quality concerns to ensure our products perform to the highest standards

If the product does not perform as described on this datasheet, we will offer a refund or replacement. For full details of the Abpromise, please visit <https://www.abcam.cn/abpromise> or contact our technical team.

Terms and conditions

- Guarantee only valid for products bought direct from Abcam or one of our authorized distributors