

### Anti-LYVE1 antibody ab36993

★★★★★ [3 Abreviews](#) [14 References](#) [7 图像](#)

#### 概述

产品名称	Anti-LYVE1抗体
描述	兔多克隆抗体to LYVE1
宿主	Rabbit
经测试应用	适用于: WB, IHC-P, IHC-Fr, Flow Cyt
种属反应性	与反应: Dog, Human, Recombinant fragment
免疫原	Recombinant fragment corresponding to Human LYVE1 aa 24-232. Recombinant human soluble LYVE1 fragment from insect cells ( <a href="#">ab54341</a> ). (Peptide available as <a href="#">ab54341</a> )
常规说明	<p>The Life Science industry has been in the grips of a reproducibility crisis for a number of years. Abcam is leading the way in addressing this with our range of recombinant monoclonal antibodies and knockout edited cell lines for gold-standard validation. Please check that this product meets your needs before purchasing.</p> <p>If you have any questions, special requirements or concerns, please send us an inquiry and/or contact our Support team ahead of purchase. Recommended alternatives for this product can be found below, along with publications, customer reviews and Q&amp;As</p>

#### 性能

形式	Lyophilized: Please reconstitute in sterile water to a concentration of 0.1-10mg/ml. When reconstituted the antibody is stable for at least two weeks at 2-8°C.
存放说明	Shipped at 4°C. Store at +4°C short term (1-2 weeks). Upon delivery aliquot. Store at -20°C. Avoid freeze / thaw cycle.
存储溶液	Constituent: PBS
纯度	Immunogen affinity purified
克隆	多克隆
同种型	IgG

#### 应用

The Abpromise guarantee

**Abpromise™** 承诺保证使用ab36993于以下的经测试应用

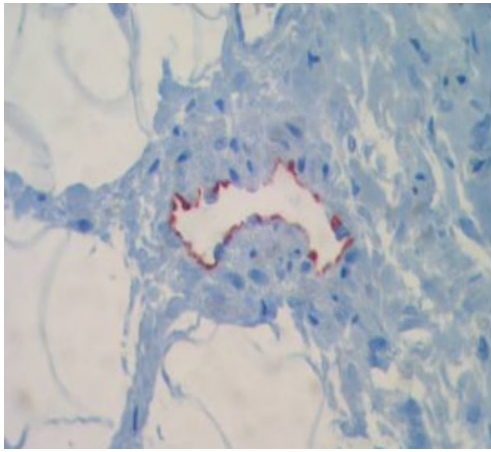
“应用说明”部分 下显示的仅为推荐的起始稀释度;实际最佳的稀释度/浓度应由使用者检定。

应用	Ab评论	说明
WB		Use a concentration of 1 - 2 µg/ml. Predicted molecular weight: 35 kDa.
IHC-P	★★★★★ (1)	Use a concentration of 6 - 30 µg/ml.
IHC-Fr	★★★★★ (1)	Use a concentration of 6 - 30 µg/ml.
Flow Cyt		Use a concentration of 3 - 10 µg/ml. <b>ab171870</b> - Rabbit polyclonal IgG, is suitable for use as an isotype control with this antibody.

靶标

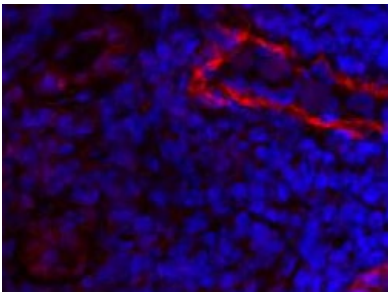
功能	Ligand-specific transporter trafficking between intracellular organelles (TGN) and the plasma membrane. Plays a role in autocrine regulation of cell growth mediated by growth regulators containing cell surface retention sequence binding (CRS). May act as a hyaluronan (HA) transporter, either mediating its uptake for catabolism within lymphatic endothelial cells themselves, or its transport into the lumen of afferent lymphatic vessels for subsequent re-uptake and degradation in lymph nodes.
组织特异性	Mainly expressed in endothelial cells lining lymphatic vessels.
序列相似性	Contains 1 Link domain.
翻译后修饰	O-glycosylated.
细胞定位	Membrane. Localized to the plasma membrane and in vesicles near extranuclear membranes which may represent trans-Golgi network (TGN) and endosomes/prelysosomal compartments. Undergoes ligand-dependent internalization and recycling at the cell surface.

图片



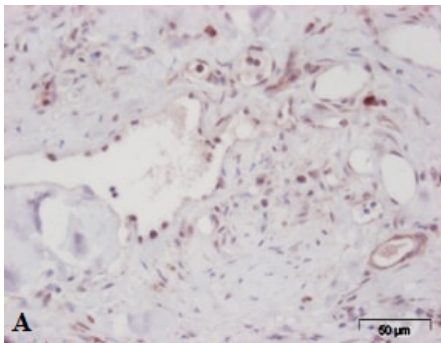
Immunohistochemistry (Formalin/PFA-fixed paraffin-embedded sections) - Anti-LYVE1 antibody (ab36993)

IHC with paraffin-embedded sections of human intestine (border area of a colon carcinoma) using antibody ab36993.



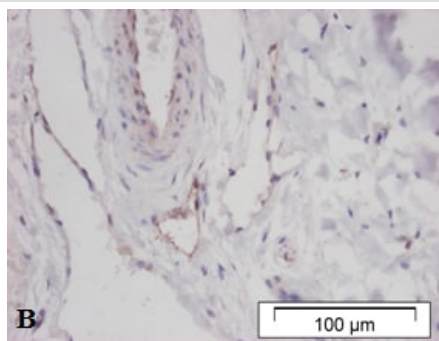
Immunohistochemistry (Frozen sections) - Anti-LYVE1 antibody (ab36993)

The staining was performed on frozen sections from human colon carcinoma using ab36993 (polyclonal anti-human LYVE-1 antibody; protein-A purified; 10 µg/ml).



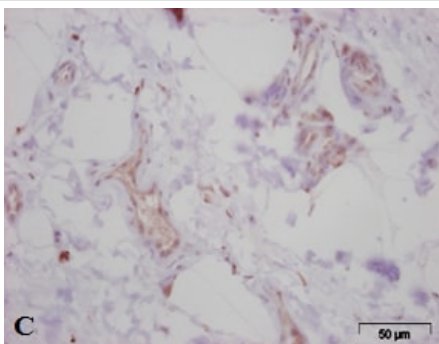
Immunohistochemistry (Formalin/PFA-fixed paraffin-embedded sections) - Anti-LYVE1 antibody (ab36993)

Immunohistochemistry (Formalin/PFA-fixed paraffin-embedded sections) analysis of lymphatic vessels of malignant canine mammary tumor tissue sections labelling LYVE1 with ab36993.



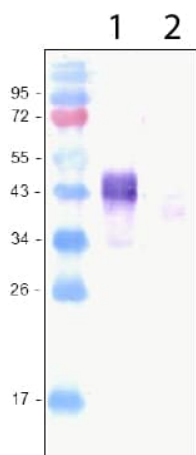
Immunohistochemistry (Formalin/PFA-fixed paraffin-embedded sections) - Anti-LYVE1 antibody (ab36993)

Immunohistochemistry (Formalin/PFA-fixed paraffin-embedded sections) analysis of lymphatic vessels of benign canine mammary tumor tissue sections labelling LYVE1 with ab36993.



Immunohistochemistry (Formalin/PFA-fixed paraffin-embedded sections) - Anti-LYVE1 antibody (ab36993)

Immunohistochemistry (Formalin/PFA-fixed paraffin-embedded sections) analysis of lymphatic vessels of normal canine mammary tissue sections labelling LYVE1 with ab36993.



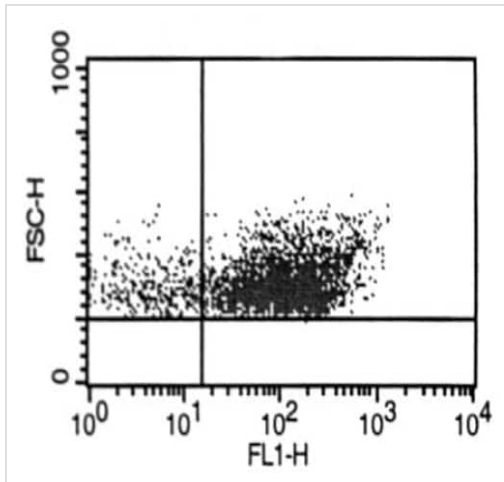
Western blot - Anti-LYVE1 antibody (ab36993)

**All lanes :** Anti-LYVE1 antibody (ab36993)

**Lane 1 :** Recombinant Human LYVE1 protein ([ab54341](#))

**Lane 2 :** Recombinant Mouse LYVE1 protein ([ab54342](#))

**Predicted band size:** 35 kDa



Flow Cytometry analysis of human dermal microvascular endothelial cells (HDMVEC) labelling LYVE1 with ab36993.

Flow Cytometry - Anti-LYVE1 antibody (ab36993)

**Please note:** All products are "FOR RESEARCH USE ONLY. NOT FOR USE IN DIAGNOSTIC PROCEDURES"

### Our Abpromise to you: Quality guaranteed and expert technical support

- Replacement or refund for products not performing as stated on the datasheet
- Valid for 12 months from date of delivery
- Response to your inquiry within 24 hours
- We provide support in Chinese, English, French, German, Japanese and Spanish
- Extensive multi-media technical resources to help you
- We investigate all quality concerns to ensure our products perform to the highest standards

If the product does not perform as described on this datasheet, we will offer a refund or replacement. For full details of the Abpromise, please visit <https://www.abcam.cn/abpromise> or contact our technical team.

### Terms and conditions

- Guarantee only valid for products bought direct from Abcam or one of our authorized distributors