


Anti-LYVE1 antibody ab10278

★★★★★ [5 Abreviews](#) [13 References](#) [6 图像](#)

概述

产品名称	Anti-LYVE1抗体
描述	兔多克隆抗体to LYVE1
宿主	Rabbit
经测试应用	适用于: IHC-Fr, Flow Cyt, IHC-P, WB
种属反应性	与反应: Human 预测可用于: Rat 
免疫原	Recombinant fragment corresponding to Human LYVE1 aa 1-250. Recombinant human soluble LYVE1 fragment produced in insect cells (ab54341). Database link: Q9Y5Y7
阳性对照	human colon carcinoma
常规说明	<p>The Life Science industry has been in the grips of a reproducibility crisis for a number of years. Abcam is leading the way in addressing this with our range of recombinant monoclonal antibodies and knockout edited cell lines for gold-standard validation. Please check that this product meets your needs before purchasing.</p> <p>If you have any questions, special requirements or concerns, please send us an inquiry and/or contact our Support team ahead of purchase. Recommended alternatives for this product can be found below, along with publications, customer reviews and Q&As</p>

性能

形式	Liquid
存放说明	Shipped at 4°C. Store at +4°C short term (1-2 weeks). Upon delivery aliquot. Store at -20°C. Avoid freeze / thaw cycle.
存储溶液	Constituent: PBS
纯度	Protein A purified
纯化说明	Protein-A Chromatography (+his tag depleted).
Primary antibody说明	The lymphatic vasculature forms a second circulatory system that drains extracellular fluid from the tissues and provides an exclusive environment in which immune cells can encounter and respond to foreign antigen. Recently a number of interesting molecules have been identified that may be exploited as markers for lymphatic endothelium, including the hyaluronan receptor LYVE1, PALE, VEGFR3, podoplanin.

克隆

多克隆

同种型

IgG

应用

The Abpromise guarantee **Abpromise™**承诺保证使用ab10278于以下的经测试应用

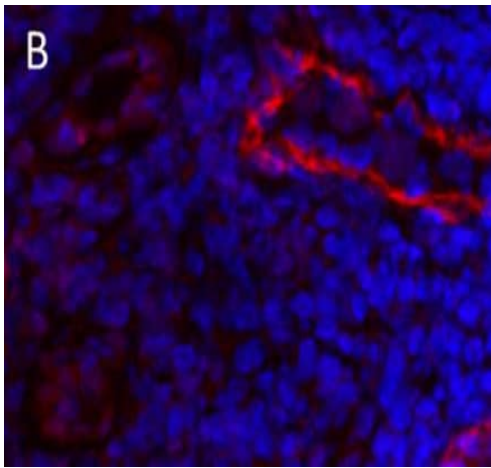
“应用说明”部分 下显示的仅为推荐的起始稀释度;实际最佳的稀释度/浓度应由使用者检定。

应用	Ab评论	说明
IHC-Fr	★★★★★ (1)	Use a concentration of 6 - 30 µg/ml. Fix sections for 10 min at -20°C in MeOH.
Flow Cyt	★★★★★ (1)	Use at an assay dependent concentration.
IHC-P	★★★★★ (2)	Use a concentration of 2 µg/ml.
WB		Use a concentration of 1 - 2 µg/ml. Detects a band of approximately 35-45 kDa (predicted molecular weight: 35 kDa).

靶标

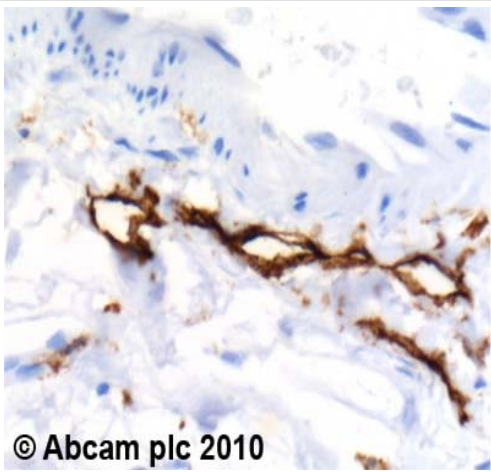
功能	Ligand-specific transporter trafficking between intracellular organelles (TGN) and the plasma membrane. Plays a role in autocrine regulation of cell growth mediated by growth regulators containing cell surface retention sequence binding (CRS). May act as a hyaluronan (HA) transporter, either mediating its uptake for catabolism within lymphatic endothelial cells themselves, or its transport into the lumen of afferent lymphatic vessels for subsequent re-uptake and degradation in lymph nodes.
组织特异性	Mainly expressed in endothelial cells lining lymphatic vessels.
序列相似性	Contains 1 Link domain.
翻译后修饰	O-glycosylated.
细胞定位	Membrane. Localized to the plasma membrane and in vesicles near extranuclear membranes which may represent trans-Golgi network (TGN) and endosomes/prelysosomal compartments. Undergoes ligand-dependent internalization and recycling at the cell surface.

图片



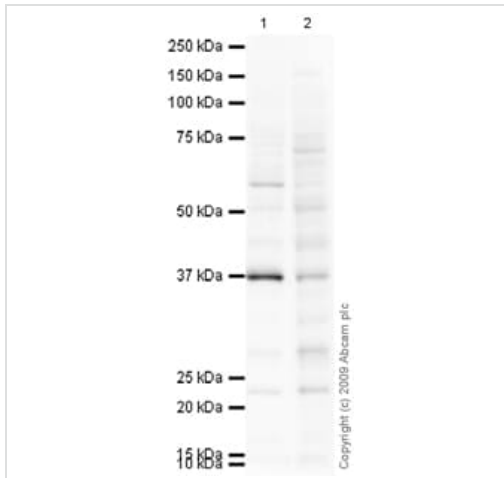
Immunohistochemistry (Frozen sections) - Anti-LYVE1 antibody (ab10278)

Immunohistochemistry (Frozen sections) analysis of human colon carcinoma tissue sections labelling LYVE1 with ab10278.



Immunohistochemistry (Formalin/PFA-fixed paraffin-embedded sections) - Anti-LYVE1 antibody (ab10278)

ab10278 (2µg/ml) staining LYVE1 in human colon using an automated system (DAKO Autostainer Plus). Using this protocol there is lymphatic endothelium staining of lymphatic ducts where blood vessel endothelium and smooth muscle is wholly negative. Sections were rehydrated and antigen retrieved with the Dako 3-in-1 AR buffer citrate pH 6.0 in a DAKO PT Link. Slides were peroxidase blocked in 3% H₂O₂ in methanol for 10 minutes. They were then blocked with Dako Protein block for 10 minutes (containing casein 0.25% in PBS) then incubated with primary antibody for 20 minutes and detected with Dako Envision Flex amplification kit for 30 minutes. Colorimetric detection was completed with Diaminobenzidine for 5 minutes. Slides were counterstained with Haematoxylin and coverslipped under DePeX. Please note that, for manual staining, optimization of primary antibody concentration and incubation time is recommended. Signal amplification may be required.



Western blot - Anti-LYVE1 antibody (ab10278)

All lanes : Anti-LYVE1 antibody (ab10278) at 1 µg/ml

Lane 1 : A549 (Human lung adenocarcinoma epithelial cell line)
Whole Cell Lysate

Lane 2 : HepG2 (Human hepatocellular liver carcinoma cell line)
Whole Cell Lysate

Lysates/proteins at 10 µg per lane.

Secondary

All lanes : Goat polyclonal to Rabbit IgG - H&L - Pre-Adsorbed (HRP) at 1/3000 dilution

Developed using the ECL technique.

Performed under reducing conditions.

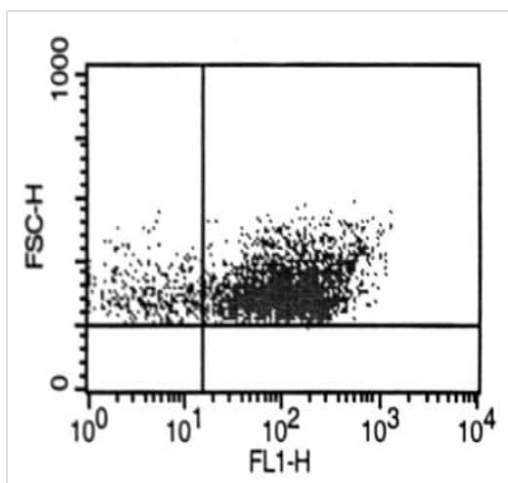
Predicted band size: 35 kDa

Observed band size: 37 kDa

Additional bands at: 22 kDa, 55 kDa. We are unsure as to the identity of these extra bands.

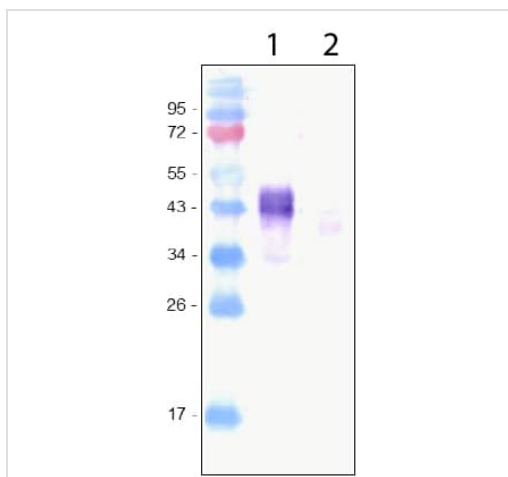
Exposure time: 4 minutes

LYVE-1 contains a number of potential glycosylation sites (SwissProt) which may explain its migration at a higher molecular weight than predicted.



Flow Cytometry - Anti-LYVE1 antibody (ab10278)

Flow Cytometry analysis of human dermal microvascular endothelial cells (HDMVEC) labelling LYVE1 with ab10278.



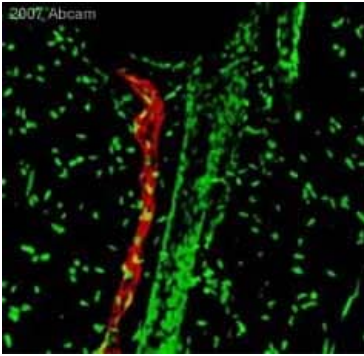
Western blot - Anti-LYVE1 antibody (ab10278)

All lanes : Anti-LYVE1 antibody (ab10278)

Lane 1 : Recombinant Human LYVE1 protein ([ab54341](#))

Lane 2 : Recombinant Mouse LYVE1 protein ([ab54342](#))

Predicted band size: 35 kDa



Immunohistochemistry (Frozen sections) - Anti-LYVE1 antibody (ab10278)

This image is courtesy of an Abreview submitted by Dr Vyacheslav Ogay

Rat skin was fixed with paraformaldehyde in 15% saturated picric acid solution for 4hr. Prior to sectioning, the specimen was infiltrated in O.C.T. and frozen in isopentane. The frozen specimen was sectioned these were rinsed in PBS for 15 min to remove O.C.T. and incubated in a 3% sodium deoxycholate solution. The specimens were rinsed twice with distilled water and then with PBS three times. The sections were incubated in 10% normal goat serum for 12 hr at 4°C, then for 12 hr with ab10278. After washing with PBS, the specimens were incubated with Alexa Fluor® 555-conjugated goat anti-rabbit IgG (H+L) (1:500), for 12 hr at 4°C. The cell nuclei were counterstained with YoYo-1. Images were obtained by using confocal microscope.

Please note: All products are "FOR RESEARCH USE ONLY. NOT FOR USE IN DIAGNOSTIC PROCEDURES"

Our Abpromise to you: Quality guaranteed and expert technical support

- Replacement or refund for products not performing as stated on the datasheet
- Valid for 12 months from date of delivery
- Response to your inquiry within 24 hours
- We provide support in Chinese, English, French, German, Japanese and Spanish
- Extensive multi-media technical resources to help you
- We investigate all quality concerns to ensure our products perform to the highest standards

If the product does not perform as described on this datasheet, we will offer a refund or replacement. For full details of the Abpromise, please visit <https://www.abcam.cn/abpromise> or contact our technical team.

Terms and conditions

- Guarantee only valid for products bought direct from Abcam or one of our authorized distributors