

# Anti-LYST antibody [3H1] ab118121

## 1 图像

### 概述

|              |  |
|--------------|--|
| <b>产品名称</b>  | Anti-LYST抗体[3H1]   |
| <b>描述</b>    | 小鼠单克隆抗体[3H1] to LYST   |
| <b>宿主</b>    | Mouse  |
| <b>经测试应用</b> | <b>适用于:</b> Sandwich ELISA   |
| <b>种属反应性</b> | <b>与反应:</b> Human  |
| <b>免疫原</b>   | Recombinant fragment, corresponding to amino acids 1-101 of Human LYST with proprietary tag (NP_000072).   |
| <b>常规说明</b>  | <p>This product was changed from ascites to tissue culture supernatant on 15 May 2019. Please note that the dilutions may need to be adjusted accordingly. If you have any questions, please do not hesitate to contact our scientific support team.</p> <p>The Life Science industry has been in the grips of a reproducibility crisis for a number of years. Abcam is leading the way in addressing this with our range of recombinant monoclonal antibodies and knockout edited cell lines for gold-standard validation. Please check that this product meets your needs before purchasing.</p> <p>If you have any questions, special requirements or concerns, please send us an inquiry and/or contact our Support team ahead of purchase. Recommended alternatives for this product can be found below, along with publications, customer reviews and Q&amp;As</p> |

### 性能

|             |   |
|-------------|---|
| <b>形式</b>   | Liquid  |
| <b>存放说明</b> | Shipped at 4°C. Upon delivery aliquot and store at -20°C or -80°C. Avoid repeated freeze / thaw cycles. |
| <b>存储溶液</b> | pH: 7.4<br>Constituent: 99% PBS   |
| <b>纯度</b>   | Tissue culture supernatant  |
| <b>纯化说明</b> | Purified from TCS.  |
| <b>克隆</b>   | 单克隆   |
| <b>克隆编号</b> | 3H1   |
| <b>同种型</b>  | IgG2b   |

轻链类型

kappa

## 应用

### The Abpromise guarantee

**Abpromise™**承诺保证使用ab118121于以下的经测试应用

“应用说明”部分下显示的仅为推荐的起始稀释度;实际最佳的稀释度/浓度应由使用者检定。

| 应用             | Ab评论 | 说明                                       |
|----------------|------|--|
| Sandwich ELISA |      | Use at an assay dependent concentration. |

## 靶标

### 功能

May be required for sorting endosomal resident proteins into late multivesicular endosomes by a mechanism involving microtubules.

### 组织特异性

Abundantly expressed in adult and fetal thymus, peripheral blood leukocytes, bone marrow and several regions of the adult brain.

### 疾病相关

Defects in LYST are the cause of Chediak-Higashi syndrome (CHS) [MIM:214500]. CHS is a rare autosomal recessive disorder characterized by hypopigmentation, severe immunologic deficiency, a bleeding tendency, neurologic abnormalities, abnormal intracellular transport to and from the lysosome, and giant inclusion bodies in a variety of cell types. Most patients die at an early age unless they receive an allogeneic hematopoietic stem cell transplant (SCT).

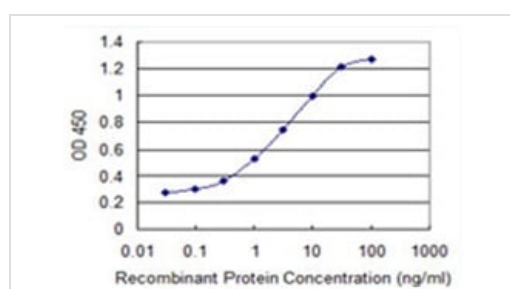
### 序列相似性

Contains 1 BEACH domain.  
Contains 7 WD repeats.

### 细胞定位

Cytoplasm.

## 图片



Detection limit for recombinant tagged LYST is 0.03 ng/ml as a capture antibody.

This image was generated using the ascites version of the product.

Sandwich ELISA - Anti-LYST antibody [3H1]  
(ab118121)

**Please note:** All products are "FOR RESEARCH USE ONLY. NOT FOR USE IN DIAGNOSTIC PROCEDURES"

**Our Abpromise to you: Quality guaranteed and expert technical support**

- Replacement or refund for products not performing as stated on the datasheet
- Valid for 12 months from date of delivery
- Response to your inquiry within 24 hours
  
- We provide support in Chinese, English, French, German, Japanese and Spanish
- Extensive multi-media technical resources to help you
- We investigate all quality concerns to ensure our products perform to the highest standards

If the product does not perform as described on this datasheet, we will offer a refund or replacement. For full details of the Abpromise, please visit <https://www.abcam.cn/abpromise> or contact our technical team.

#### **Terms and conditions**

---

- Guarantee only valid for products bought direct from Abcam or one of our authorized distributors