

### Anti-Lysozyme antibody [EPR2994(2)] ab108508

敲除验证
重组
RabMAb

★★★★★
4 Abreviews
81 References
16 图像

#### 概述

产品名称	Anti-Lysozyme抗体[EPR2994(2)]
描述	兔单克隆抗体[EPR2994(2)] to Lysozyme
宿主	Rabbit
经测试应用	<b>适用于:</b> ICC/IF, WB, IHC-P <b>不适用于:</b> IP
种属反应性	<b>与反应:</b> Mouse, Human
免疫原	Synthetic peptide. This information is proprietary to Abcam and/or its suppliers.
阳性对照	WB: THP-1, HepG2, RAW 264.7 and HL-60 whole cell lysate; Human spleen tissue lysate; Natural human Lysozyme protein. IHC-P: Human tonsil, spleen, lung, kidney, brain, breast and heart tissues; Mouse spleen and small intestine tissues. ICC/IF: THP-1 cells.
常规说明	<p>This product is a recombinant monoclonal antibody, which offers several advantages including:</p> <ul style="list-style-type: none"> <li>- High batch-to-batch consistency and reproducibility</li> <li>- Improved sensitivity and specificity</li> <li>- Long-term security of supply</li> <li>- Animal-free production</li> </ul> <p>For more information <a href="#">see here</a>.</p> <p>Our RabMAb<sup>®</sup> technology is a patented hybridoma-based technology for making rabbit monoclonal antibodies. For details on our patents, please refer to <a href="#">RabMAb<sup>®</sup> patents</a>.</p>

#### 性能

形式	Liquid
存放说明	Shipped at 4°C. Store at +4°C short term (1-2 weeks). Upon delivery aliquot. Store at -20°C. Avoid freeze / thaw cycle.
存储溶液	pH: 7.20 Preservative: 0.01% Sodium azide Constituents: 40% Glycerol, 0.05% BSA, PBS
纯度	Protein A purified
克隆	单克隆
克隆编号	EPR2994(2)

同种型

IgG

应用

The Abpromise guarantee

Abpromise™承诺保证使用ab108508于以下的经测试应用

“应用说明”部分 下显示的仅为推荐的起始稀释度;实际最佳的稀释度/浓度应由使用者检定。

应用	Ab评论	说明
ICC/IF		1/250. For unpurified use at 1/500 - 1/1000.
WB		1/10000 - 1/50000. Predicted molecular weight: 17 kDa.
IHC-P	★★★★★ (4)	1/1000 - 1/5000. Perform heat mediated antigen retrieval before commencing with IHC staining protocol. Heat up to 98°C, below boiling, and then let cool for 10-20 min. See <a href="#">IHC antigen retrieval protocols</a> .

应用说明

Is unsuitable for IP.

靶标

功能

Lysozymes have primarily a bacteriolytic function; those in tissues and body fluids are associated with the monocyte-macrophage system and enhance the activity of immunoagents.

疾病相关

Amyloidosis 8

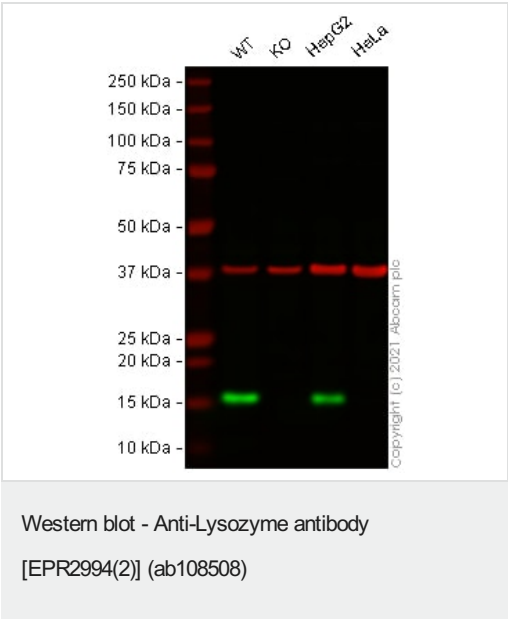
序列相似性

Belongs to the glycosyl hydrolase 22 family.

细胞定位

Secreted.

图片



All lanes : Anti-Lysozyme antibody [EPR2994(2)] (ab108508) at 1/10000 dilution

Lane 1 : Wild-type THP-1 (Human monocytic leukemia cell line) whole cell lysate

Lane 2 : LYZ knockout THP-1 (Human monocytic leukemia cell line) whole cell lysate

Lane 3 : Hep G2 (Human liver hepatocellular carcinoma cell line) whole cell lysate

Lane 4 : HeLa (Human epithelial cell line from cervix adenocarcinoma) whole cell lysate

Lysates/proteins at 20 µg per lane.

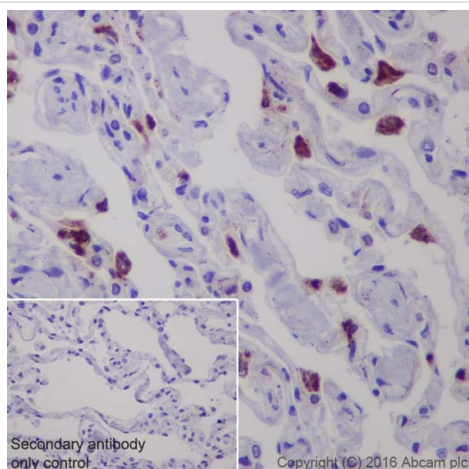
Performed under reducing conditions.

**Predicted band size:** 17 kDa

**Observed band size:** 16 kDa

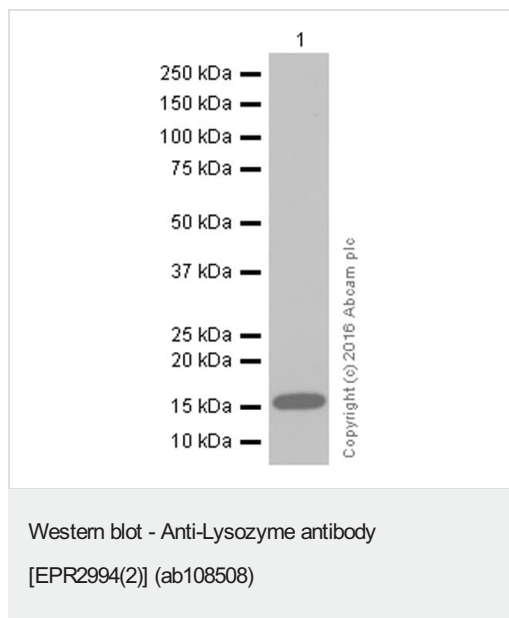
**Lanes 1 - 4:** Merged signal (red and green). Green - ab108508 observed at 16 kDa. Red - loading control **ab8245** (Mouse anti-GAPDH antibody [6C5]) observed at 37 kDa.

ab108508 was shown to react with Lysozyme in wild-type THP1 cells in Western blot with loss of signal observed in LYZ knockout sample. Wild-type THP1 and LYZ knockout cell lysates were subjected to SDS-PAGE. Membranes were blocked in 3 % milk in TBS-T (0.1 % Tween®) before incubation with ab108508 and **ab8245** (Mouse anti-GAPDH antibody [6C5]) overnight at 4°C at a 1 in 10000 dilution and a 1 in 20000 dilution respectively. Blots were incubated with Goat anti-Rabbit IgG H&L (IRDye® 800CW) preabsorbed (**ab216773**) and Goat anti-Mouse IgG H&L (IRDye® 680RD) preabsorbed (**ab216776**) secondary antibodies at 1 in 20000 dilution for 1 h at room temperature before imaging.



Immunohistochemical analysis of paraffin-embedded human lung tissue sections labeling lysozyme with purified ab108508 at a dilution of 1/1500 (0.6 µg/ml). **ab97051** Goat Anti-Rabbit IgG H&L (HRP) at 1/500 was used as the secondary antibody. Sections were counterstained with Hematoxylin. Antigen retrieval was heat mediated using EDTA Buffer, pH 9.0. PBS was used instead of the primary antibody as the negative control and is shown in the inset.

Immunohistochemistry (Formalin/PFA-fixed paraffin-embedded sections) - Anti-Lysozyme antibody [EPR2994(2)] (ab108508)



Anti-Lysozyme antibody [EPR2994(2)] (ab108508) at 1/10000 dilution (purified) + RAW 264.7 (Mouse macrophage cell line transformed with Abelson murine leukemia virus) whole cell lysate at 20 µg

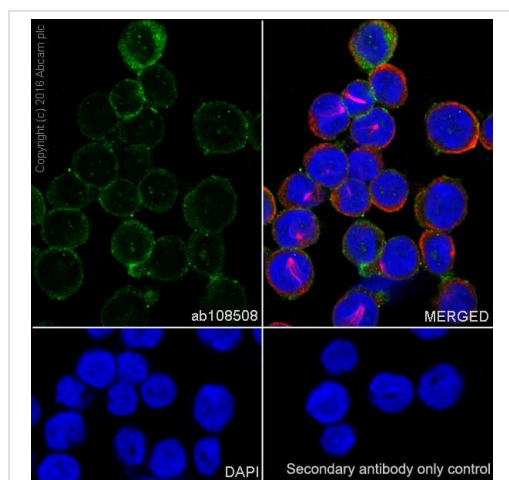
### Secondary

Anti-Rabbit IgG (HRP), specific to the non-reduced form of IgG at 1/2000 dilution

**Predicted band size:** 17 kDa

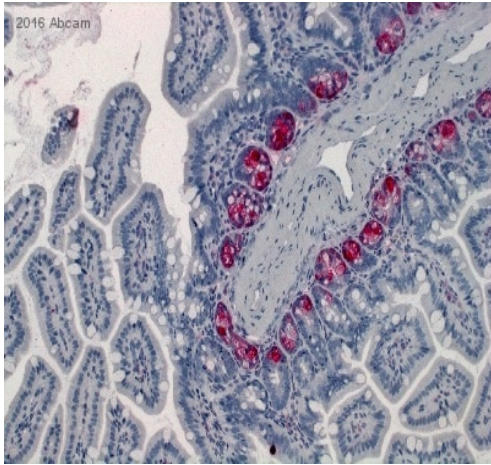
**Observed band size:** 16 kDa

Blocking/Diluting buffer 5% NFDm/TBST



Immunocytochemistry/Immunofluorescence analysis of THP-1 (Human monocytic leukemia) cells labeling lysozyme with purified ab108508 at 1/250. Cells were fixed with 100% methanol.  
**ab150077**, Alexa Fluor®488-conjugated goat anti-rabbit IgG (1/1000) was used as the secondary antibody. Cells were counter-stained with **ab195889** Anti-Alpha Tubulin antibody [DM1A] (1/200, 2.5 g/mL) - Microtubule Marker (Alexa Fluor®594) at 1/200. DAPI (blue) was used as a nuclear counterstain. Secondary Only Control: PBS was used instead of the primary antibody as the negative control.

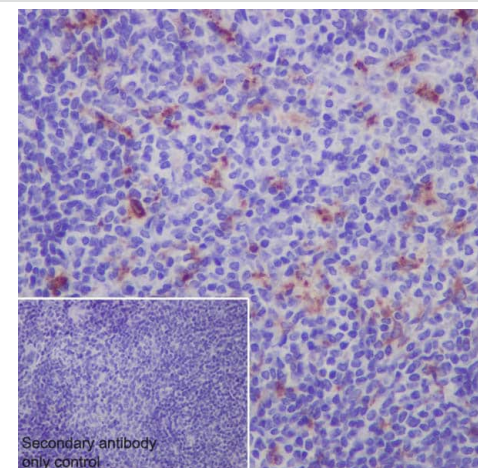
Immunocytochemistry/ Immunofluorescence - Anti-Lysozyme antibody [EPR2994(2)] (ab108508)



Immunohistochemistry (Formalin/PFA-fixed paraffin-embedded sections) - Anti-Lysozyme antibody  
[EPR2994(2)] (ab108508)

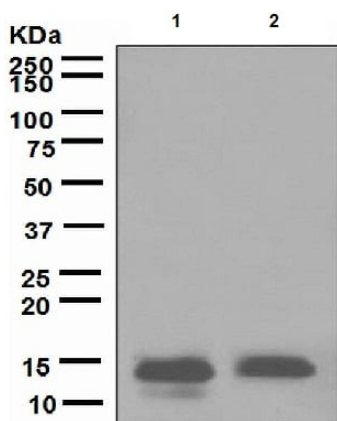
This image is courtesy of an Abreview submitted by Mr. Thorsten Cramer.

Paraffin-embedded mouse small intestine tissue stained for Lysozyme using ab108508 in immunohistochemical analysis.



Immunohistochemistry (Formalin/PFA-fixed paraffin-embedded sections) - Anti-Lysozyme antibody  
[EPR2994(2)] (ab108508)

Immunohistochemical analysis of paraffin-embedded mouse spleen tissue sections labeling lysozyme with purified ab108508 at a dilution of 1/1500 (0.6  $\mu\text{g/ml}$ ). **ab97051** Goat Anti-Rabbit IgG H&L (HRP) at 1/500 was used as the secondary antibody. Sections were counterstained with hematoxylin. Antigen retrieval was heat mediated using EDTA Buffer, pH 9.0. PBS was used instead of the primary antibody as the negative control and is shown in the inset.



Western blot - Anti-Lysozyme antibody  
[EPR2994(2)] (ab108508)

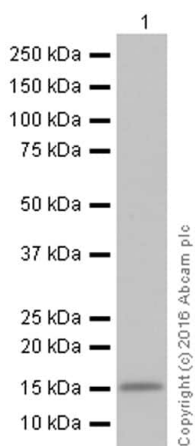
**All lanes** : Anti-Lysozyme antibody [EPR2994(2)] (ab108508) at 1/10000 dilution (unpurified)

**Lane 1** : HL60 (human promyelocytic leukemia cell line) cell lysate

**Lane 2** : Human spleen lysate

Lysates/proteins at 10 µg per lane.

**Predicted band size:** 17 kDa



Western blot - Anti-Lysozyme antibody  
[EPR2994(2)] (ab108508)

Anti-Lysozyme antibody [EPR2994(2)] (ab108508) at 1/50000 dilution (purified) + HL-60 (Human promyelocytic leukemia cell line) whole cell lysate at 20 µg

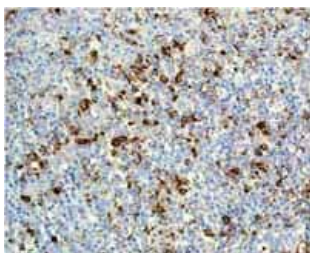
#### Secondary

Anti-Rabbit IgG (HRP), specific to the non-reduced form of IgG at 1/2000 dilution

**Predicted band size:** 17 kDa

**Observed band size:** 16 kDa

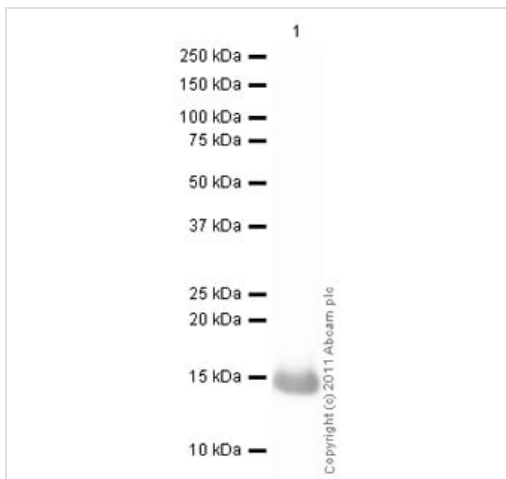
Blocking/Diluting buffer 5% NFDM/TBST



Immunohistochemistry (Formalin/PFA-fixed paraffin-embedded sections) - Anti-Lysozyme antibody  
[EPR2994(2)] (ab108508)

Unpurified ab108508, at 1/1000 dilution, staining Lysozyme in Human tonsil by Immunohistochemistry, Paraffin-embedded tissue.

Perform heat mediated antigen retrieval before commencing with IHC staining protocol.



Western blot - Anti-Lysozyme antibody  
[EPR2994(2)] (ab108508)

Anti-Lysozyme antibody [EPR2994(2)] (ab108508) at 1 µg/ml  
(unpurified) + Native human Lysozyme protein (**ab91125**) at 0.1 µg

### Secondary

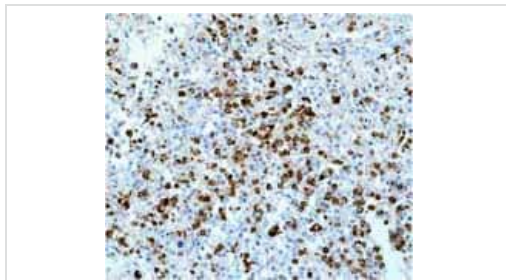
Goat Anti-Rabbit IgG H&L (HRP) preadsorbed (**ab97080**) at  
1/5000 dilution

Developed using the ECL technique.

Performed under reducing conditions.

**Predicted band size:** 17 kDa

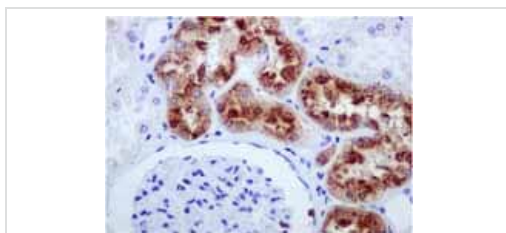
**Exposure time:** 4 minutes



Immunohistochemistry (Formalin/PFA-fixed paraffin-  
embedded sections) - Anti-Lysozyme antibody  
[EPR2994(2)] (ab108508)

Unpurified ab108508, at 1/1000 dilution, staining Lysozyme in  
Human spleen by Immunohistochemistry, Paraffin-embedded  
tissue.

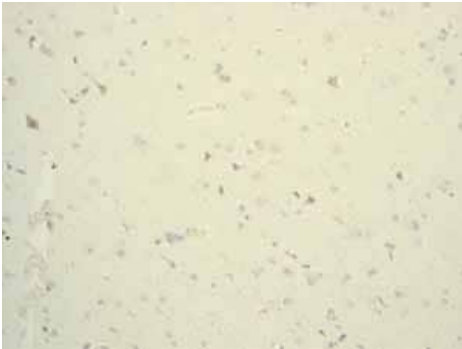
Perform heat mediated antigen retrieval before commencing with  
IHC staining protocol.



Immunohistochemistry (Formalin/PFA-fixed paraffin-  
embedded sections) - Anti-Lysozyme antibody  
[EPR2994(2)] (ab108508)

Unpurified ab108508, at 1/1000 dilution, staining Lysozyme in  
Human kidney by Immunohistochemistry, Paraffin-embedded  
tissue.

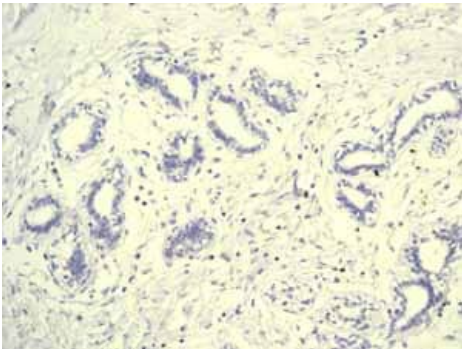
Perform heat mediated antigen retrieval before commencing with  
IHC staining protocol.



Immunohistochemistry (Formalin/PFA-fixed paraffin-embedded sections) - Anti-Lysozyme antibody [EPR2994(2)] (ab108508)

Unpurified ab108508 showing negative staining in Normal human brain tissue.

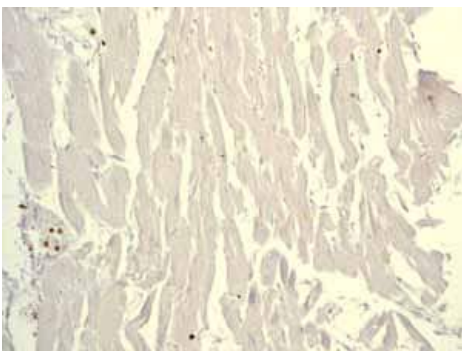
Perform heat mediated antigen retrieval before commencing with IHC staining protocol.



Immunohistochemistry (Formalin/PFA-fixed paraffin-embedded sections) - Anti-Lysozyme antibody [EPR2994(2)] (ab108508)

Unpurified ab108508 showing negative staining in Normal human breast tissue.

Perform heat mediated antigen retrieval before commencing with IHC staining protocol.



Immunohistochemistry (Formalin/PFA-fixed paraffin-embedded sections) - Anti-Lysozyme antibody [EPR2994(2)] (ab108508)

Unpurified ab108508 showing negative staining in Normal human heart tissue.

Perform heat mediated antigen retrieval before commencing with IHC staining protocol.

### Why choose a recombinant antibody?



**Research with confidence**  
Consistent and reproducible results



**Long-term and scalable supply**  
Recombinant technology



**Success from the first experiment**  
Confirmed specificity



**Ethical standards compliant**  
Animal-free production

Anti-Lysozyme antibody [EPR2994(2)] (ab108508)

**Please note:** All products are "FOR RESEARCH USE ONLY. NOT FOR USE IN DIAGNOSTIC PROCEDURES"

### Our Abpromise to you: Quality guaranteed and expert technical support

---

- Replacement or refund for products not performing as stated on the datasheet
- Valid for 12 months from date of delivery
- Response to your inquiry within 24 hours
- We provide support in Chinese, English, French, German, Japanese and Spanish
- Extensive multi-media technical resources to help you
- We investigate all quality concerns to ensure our products perform to the highest standards

If the product does not perform as described on this datasheet, we will offer a refund or replacement. For full details of the Abpromise, please visit <https://www.abcam.cn/abpromise> or contact our technical team.

### Terms and conditions

---

- Guarantee only valid for products bought direct from Abcam or one of our authorized distributors