

Anti-LY6G6F antibody ab121272

2 图像

概述

产品名称	Anti-LY6G6F 抗体
描述	兔多克隆抗体 to LY6G6F
宿主	Rabbit
经测试应用	适用于: IHC-P, WB
种属反应性	与反应: Human
免疫原	internal sequence amino acids 85-224 of Human LY6G6F.
阳性对照	Human testis tissue. Human liver lysate.
常规说明	<p>The Life Science industry has been in the grips of a reproducibility crisis for a number of years. Abcam is leading the way in addressing this with our range of recombinant monoclonal antibodies and knockout edited cell lines for gold-standard validation. Please check that this product meets your needs before purchasing.</p> <p>If you have any questions, special requirements or concerns, please send us an inquiry and/or contact our Support team ahead of purchase. Recommended alternatives for this product can be found below, along with publications, customer reviews and Q&As</p>

性能

形式	Liquid
存放说明	Shipped at 4°C. Upon delivery aliquot and store at -20°C. Avoid freeze / thaw cycles.
存储溶液	pH: 7.20 Preservative: 0.02% Sodium azide Constituents: 59% PBS, 40% Glycerol (glycerin, glycerine)
纯度	Immunogen affinity purified
克隆	多克隆
同种型	IgG

应用

The Abpromise guarantee **Abpromise™** 承诺保证使用 ab121272 于以下的经测试应用

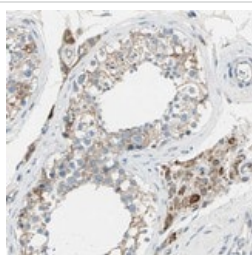
“应用说明”部分 下显示的仅为推荐的起始稀释度; 实际最佳的稀释度/浓度应由使用者检定。

应用	Ab评论	说明
IHC-P		1/10 - 1/20. Perform heat mediated antigen retrieval with citrate buffer pH 6 before commencing with IHC staining protocol.
WB		1/250 - 1/500.

靶标

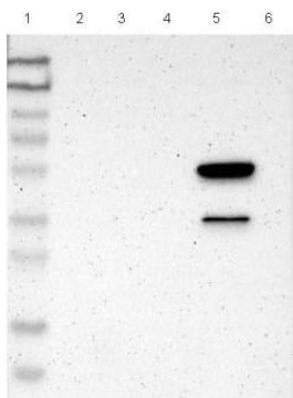
功能	May play a role in the downstream signal transduction pathways involving GRB2 and GRB7.
序列相似性	Contains 1 Ig-like V-type (immunoglobulin-like) domain.
翻译后修饰	N-glycosylated.
细胞定位	Cell membrane.

图片



Immunohistochemistry (Formalin/PFA-fixed paraffin-embedded sections) - Anti-LY6G6F antibody (ab121272)

ab121272 at 1/10 dilution staining LY6G6F in paraffin-embedded Human testis tissue by Immunohistochemistry.



Western blot - Anti-LY6G6F antibody (ab121272)

All lanes : Anti-LY6G6F antibody (ab121272) at 1/250 dilution

Lane 1 : Marker [kDa] 230, 130, 95, 72, 56, 36, 28, 17, 11

Lane 2 : RT-4 cell lysate.

Lane 3 : U-251 MG cell lysate.

Lane 4 : Human Plasma

Lane 5 : Human Liver lysate.

Lane 6 : Human Tonsil lysate.

Developed using the ECL technique.

Please note: All products are "FOR RESEARCH USE ONLY. NOT FOR USE IN DIAGNOSTIC PROCEDURES"

Our Abpromise to you: Quality guaranteed and expert technical support

- Replacement or refund for products not performing as stated on the datasheet
- Valid for 12 months from date of delivery
- Response to your inquiry within 24 hours

- We provide support in Chinese, English, French, German, Japanese and Spanish
- Extensive multi-media technical resources to help you
- We investigate all quality concerns to ensure our products perform to the highest standards

If the product does not perform as described on this datasheet, we will offer a refund or replacement. For full details of the Abpromise, please visit <https://www.abcam.cn/abpromise> or contact our technical team.

Terms and conditions

- Guarantee only valid for products bought direct from Abcam or one of our authorized distributors