

Anti-Ly6c antibody [HK1.4] ab24973

★★★★★ [2 Abreviews](#) [6 References](#) [1 图像](#)

概述

产品名称	Anti-Ly6c抗体[HK1.4]
描述	大鼠单克隆抗体[HK1.4] to Ly6c
宿主	Rat
经测试应用	适用于: Flow Cyt
种属反应性	与反应: Mouse
免疫原	Tissue, cells or virus corresponding to Ly6c. L3 cloned CTL cells
常规说明	<p>The Life Science industry has been in the grips of a reproducibility crisis for a number of years. Abcam is leading the way in addressing this with our range of recombinant monoclonal antibodies and knockout edited cell lines for gold-standard validation. Please check that this product meets your needs before purchasing.</p> <p>If you have any questions, special requirements or concerns, please send us an inquiry and/or contact our Support team ahead of purchase. Recommended alternatives for this product can be found below, along with publications, customer reviews and Q&As</p>

性能

形式	Liquid
存放说明	Shipped at 4°C. Store at +4°C short term (1-2 weeks). Upon delivery aliquot. Store at -20°C long term. Avoid freeze / thaw cycle.
存储溶液	pH: 8.2
纯度	Affinity purified
克隆	单克隆
克隆编号	HK1.4
同种型	IgG2c
轻链类型	kappa

应用

The Abpromise guarantee

Abpromise™ 承诺保证使用ab24973于以下的经测试应用

“应用说明”部分 下显示的仅为推荐的起始稀释度;实际最佳的稀释度/浓度应由使用者检定。

应用	Ab评论	说明
Flow Cyt		

应用说明

Cellular activation: Use at an assay dependent dilution.

Flow Cyt: Use 1µg for 10⁶ cells.

IHC-Fr: Use at an assay dependent dilution.

Not yet tested in other applications.

Optimal dilutions/concentrations should be determined by the end user.

靶标

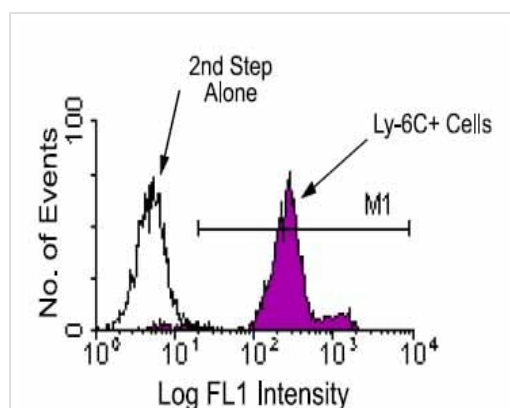
相关性

Ly6C is a monocyte/macrophage and endothelial cell differentiation antigen regulated by interferon gamma, and may play a role in the development and maturation of lymphocytes. It is a member of the Ly6 multigene family of type V glycoposphatidylinositol anchored cell surface proteins. It is expressed on bone marrow cells, monocytes/macrophages, neutrophils, endothelial cells, and T cell subsets. Mice with the Ly6.2 allotype (e.g., AKR, C57BL, C57BR, C57L, DBA/2, PL, SJL, SWR, 129) have subsets of CD4+Ly6C+ and CD8+Ly6C+ cells, while Ly6.1 strains (e.g., A, BALB/c, CBA, C3H/He, DBA/1, NZB) have only CD8+Ly6C+ lymphocytes.

细胞定位

Cell membrane; Lipid-anchor, GPI-anchor.

图片



Flow Cytometry - Anti-Ly6c antibody [HK1.4]
(ab24973)

Bone marrow cells from C57BL/6 mice were labeled with ab24973 and then stained with goat anti-rat IgG-FITC. Large cells were gated and analyzed by flow cytometry.

Please note: All products are "FOR RESEARCH USE ONLY. NOT FOR USE IN DIAGNOSTIC PROCEDURES"

Our Promise to you: Quality guaranteed and expert technical support

- Replacement or refund for products not performing as stated on the datasheet
- Valid for 12 months from date of delivery

- Response to your inquiry within 24 hours
- We provide support in Chinese, English, French, German, Japanese and Spanish
- Extensive multi-media technical resources to help you
- We investigate all quality concerns to ensure our products perform to the highest standards

If the product does not perform as described on this datasheet, we will offer a refund or replacement. For full details of the Abpromise, please visit <https://www.abcam.cn/abpromise> or contact our technical team.

Terms and conditions

- Guarantee only valid for products bought direct from Abcam or one of our authorized distributors