

### Anti-LXR alpha antibody [PPZ0412] ab41902

★★★★★ [12 Abreviews](#) [78 References](#) [4 图像](#)

#### 概述

产品名称	Anti-LXR alpha抗体[PPZ0412]
描述	小鼠单克隆抗体[PPZ0412] to LXR alpha
宿主	Mouse
经测试应用	适用于: ICC/IF, ELISA, IP, ChIP, GSA, IHC-P, Flow Cyt 不适用于: WB
种属反应性	与反应: Mouse, Rat, Human
免疫原	Recombinant fragment corresponding to Human LXR alpha aa 164-447. Database link: <a href="#">Q13133</a>
阳性对照	Rat hepatocyte and kupffer cell. Rat spleen macrophage.
常规说明	<p>This product was changed from ascites to tissue culture supernatant on 3<sup>rd</sup> April 2019. Please note that the dilutions may need to be adjusted accordingly. If you have any questions, please do not hesitate to contact our scientific support team.</p> <p>The Life Science industry has been in the grips of a reproducibility crisis for a number of years. Abcam is leading the way in addressing this with our range of recombinant monoclonal antibodies and knockout edited cell lines for gold-standard validation. Please check that this product meets your needs before purchasing.</p> <p>If you have any questions, special requirements or concerns, please send us an inquiry and/or contact our Support team ahead of purchase. Recommended alternatives for this product can be found below, along with publications, customer reviews and Q&amp;As</p>

#### 性能

形式	Liquid
存放说明	Shipped at 4°C. Store at +4°C short term (1-2 weeks). Upon delivery aliquot. Store at -20°C long term. Avoid freeze / thaw cycle.
存储溶液	pH: 7 Preservative: 0.1% Sodium azide
纯度	Physiological saline.
克隆	Tissue culture supernatant 单克隆

克隆编号 PPZ0412

同种型 IgG2a

应用

The Abpromise guarantee      **Abpromise™**承诺保证使用ab41902于以下的经测试应用

“应用说明”部分 下显示的仅为推荐的起始稀释度;实际最佳的稀释度/浓度应由使用者检定。

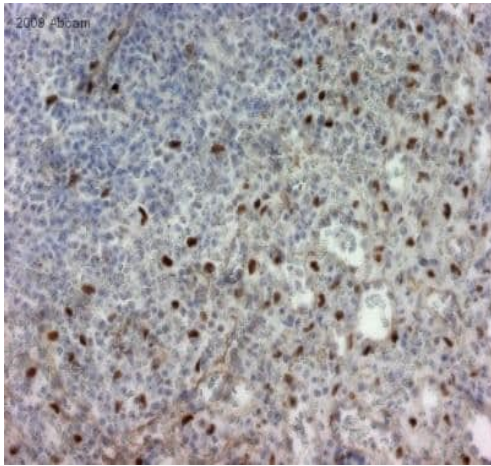
应用	Ab评论	说明
ICC/IF	★★★★★ (1)	Use at an assay dependent concentration.
ELISA		Use at an assay dependent concentration.
IP		Use at an assay dependent concentration.
ChIP	★★★★★ (1)	Use at an assay dependent concentration.
GSA		Use at an assay dependent concentration.
EMSA		Use at an assay dependent concentration.
IHC-P	★★★★★ (2)	Use at an assay dependent concentration.
Flow Cyt		Use at an assay dependent concentration. <b>ab170191</b> - Mouse monoclonal IgG2a, is suitable for use as an isotype control with this antibody.

应用说明      Is unsuitable for WB.

靶标

功能	Orphan receptor. Interaction with RXR shifts RXR from its role as a silent DNA-binding partner to an active ligand-binding subunit in mediating retinoid responses through target genes defined by LXRES. LXRES are DR4-type response elements characterized by direct repeats of two similar hexanucleotide half-sites spaced by four nucleotides. Plays an important role in the regulation of cholesterol homeostasis, regulating cholesterol uptake through MYLIP-dependent ubiquitination of LDLR, VLDLR and LRP8.
组织特异性	Visceral organs specific expression. Strong expression was found in liver, kidney and intestine followed by spleen and to a lesser extent the adrenals.
序列相似性	Belongs to the nuclear hormone receptor family. NR1 subfamily. Contains 1 nuclear receptor DNA-binding domain.
细胞定位	Nucleus.

图片

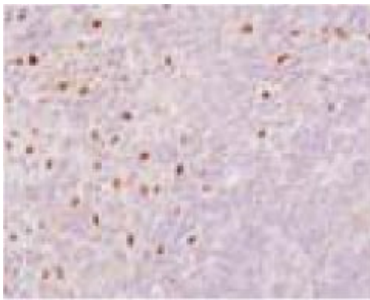


Immunohistochemistry (Formalin/PFA-fixed paraffin-embedded sections) - Anti-LXR alpha antibody [PPZ0412] (ab41902)

This image is courtesy of an abreview submitted by Rudolf Jung, University of Regensburg.

Immunohistochemistry (Formalin/PFA-fixed paraffin-embedded sections) analysis of human spleen tissue sections labeling LXR alpha with ab41902 at 1/100 dilution. Tissue was fixed with formaldehyde and permeabilized with Tween 20. Heat mediated antigen retrieval was performed using TRIS-EDTA Buffer. Tissue sections were incubated with Anti-LXR alpha antibody [PPZ0412] - ChIP Grade (ab41902) for 30 minutes at 20°C in diluent from DAKO. An undiluted HRP conjugated horse anti-mouse secondary antibody was used.

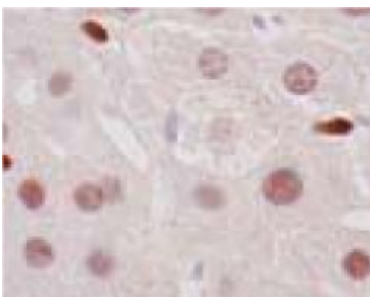
This image was generated using the ascites version of the product.



Immunohistochemistry (Formalin/PFA-fixed paraffin-embedded sections) - Anti-LXR alpha antibody [PPZ0412] - ChIP Grade (ab41902)

ab41902 staining LXR alpha in rat spleen macrophage cell paraffin section (20-40ug/mL) by Immunohistochemistry, formalin-fixed paraffin embedded sections.

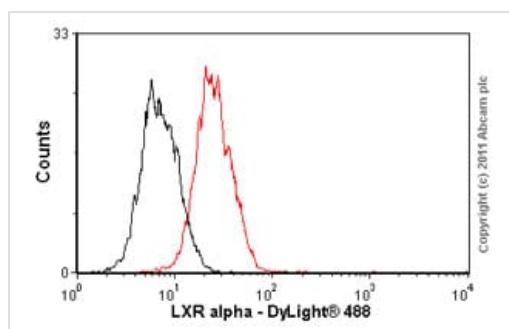
This image was generated using the ascites version of the product.



Immunohistochemistry (Formalin/PFA-fixed paraffin-embedded sections) - Anti-LXR alpha antibody [PPZ0412] - ChIP Grade (ab41902)

ab41902 staining LXR alpha in Rat Hepatocyte and Kupffer cell paraffin section (20-40ug/mL) by Immunohistochemistry, formalin-fixed paraffin embedded sections.

This image was generated using the ascites version of the product.



Flow Cytometry - Anti-LXR alpha antibody  
[PPZ0412] - ChIP Grade (ab41902)

Overlay histogram showing HepG2 cells stained with ab41902 (red line). The cells were fixed with 80% methanol (5 min) and then permeabilized with 0.1% PBS-Tween for 20 min. The cells were then incubated in 1x PBS / 10% normal goat serum / 0.3M glycine to block non-specific protein-protein interactions followed by the antibody (ab41902, 1µg/1x10<sup>6</sup> cells) for 30 min at 22°C. The secondary antibody used was DyLight® 488 goat anti-mouse IgG (H+L) (**ab96879**) at 1/500 dilution for 30 min at 22°C. Isotype control antibody (black line) was mouse IgG2a [ICIGG2A] (**ab91361**, 2µg/1x10<sup>6</sup> cells) used under the same conditions. Acquisition of >5,000 events was performed.

This image was generated using the ascites version of the product.

**Please note:** All products are "FOR RESEARCH USE ONLY. NOT FOR USE IN DIAGNOSTIC PROCEDURES"

### Our Abpromise to you: Quality guaranteed and expert technical support

- Replacement or refund for products not performing as stated on the datasheet
- Valid for 12 months from date of delivery
- Response to your inquiry within 24 hours
- We provide support in Chinese, English, French, German, Japanese and Spanish
- Extensive multi-media technical resources to help you
- We investigate all quality concerns to ensure our products perform to the highest standards

If the product does not perform as described on this datasheet, we will offer a refund or replacement. For full details of the Abpromise, please visit <https://www.abcam.cn/abpromise> or contact our technical team.

### Terms and conditions

- Guarantee only valid for products bought direct from Abcam or one of our authorized distributors