


Anti-LXR alpha antibody [EPR6508(N)] ab176323

 **RabMAb**

★★★★★ **2 Abreviews** **47 References** **4 图像**

概述

产品名称	Anti-LXR alpha抗体[EPR6508(N)]
描述	兔单克隆抗体[EPR6508(N)] to LXR alpha
宿主	Rabbit
经测试应用	适用于: WB 不适用于: Flow Cyt (Intra), ICC/IF, IHC-P or IP
种属反应性	与反应: Human 预测可用于: Mouse, Rat, Sheep 
免疫原	Synthetic peptide within Human LXR alpha aa 50-150 (Cysteine residue). The exact sequence is proprietary. Database link: Q13133 (Peptide available as ab191835)
阳性对照	WB: Jurkat, SH-SY5Y, IMR-32 cell non-nuclear and nuclear fractions, HEK 293 transfected with blank vectors, blank vectors non-nuclear fraction and blank vectors nuclear fraction, HEK 293 transfected with His tagged human LXR alpha full length expression vectors non-nuclear fraction and nuclear fraction, HEK 293 transfected with His tagged human LXR alpha and beta full length expression vectors.
常规说明	This product is a recombinant monoclonal antibody, which offers several advantages including: - High batch-to-batch consistency and reproducibility - Improved sensitivity and specificity - Long-term security of supply - Animal-free production For more information see here . Our RabMAb [®] technology is a patented hybridoma-based technology for making rabbit monoclonal antibodies. For details on our patents, please refer to RabMAb[®] patents .

性能

形式	Liquid
存放说明	Shipped at 4°C. Store at +4°C short term (1-2 weeks). Upon delivery aliquot. Store at -20°C long term. Avoid freeze / thaw cycle.

存储溶液	pH: 7.20 Preservative: 0.01% Sodium azide Constituents: 9% PBS, 40% Glycerol (glycerin, glycerine), 0.05% BSA, 50% Tissue culture supernatant
纯度	Protein A purified
克隆	单克隆
克隆编号	EPR6508(N)
同种型	IgG

应用

The Abpromise guarantee

Abpromise™承诺保证使用ab176323于以下的经测试应用

“应用说明”部分 下显示的仅为推荐的起始稀释度;实际最佳的稀释度/浓度应由使用者检定。

应用	Ab评论	说明
WB	★★★★★ (2)	1/1000 - 1/5000. Predicted molecular weight: 50 kDa.

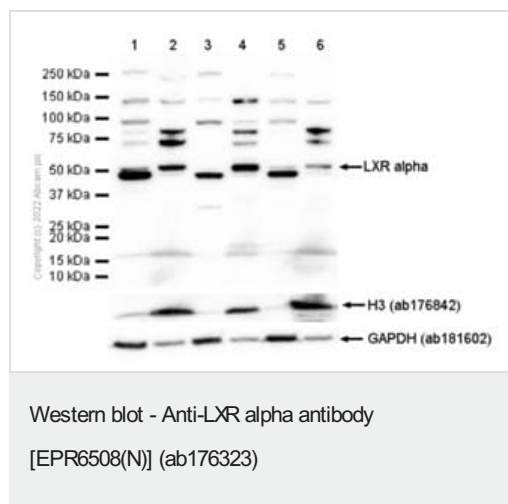
应用说明

Is unsuitable for Flow Cyt (Intra),ICC/IF,IHC-P or IP.

靶标

功能	Orphan receptor. Interaction with RXR shifts RXR from its role as a silent DNA-binding partner to an active ligand-binding subunit in mediating retinoid responses through target genes defined by LXRES. LXRES are DR4-type response elements characterized by direct repeats of two similar hexanucleotide half-sites spaced by four nucleotides. Plays an important role in the regulation of cholesterol homeostasis, regulating cholesterol uptake through MYLIP-dependent ubiquitination of LDLR, VLDLR and LRP8.
组织特异性	Visceral organs specific expression. Strong expression was found in liver, kidney and intestine followed by spleen and to a lesser extent the adrenals.
序列相似性	Belongs to the nuclear hormone receptor family. NR1 subfamily. Contains 1 nuclear receptor DNA-binding domain.
细胞定位	Nucleus.

图片



All lanes : Anti-LXR alpha antibody [EPR6508(N)] (ab176323) at 1/1000 dilution

Lane 1 : Jurkat (Human T cell leukemia T lymphocyte) cells non-nuclear fraction

Lane 2 : Jurkat (Human T cell leukemia T lymphocyte) cells nuclear fraction

Lane 3 : SH-SY5Y (Human neuroblastoma epithelial cell) cells non-nuclear fraction

Lane 4 : SH-SY5Y (Human neuroblastoma epithelial cell) cells nuclear fraction

Lane 5 : IMR-32 (Human neuroblastoma neuroblast) cells non-nuclear fraction

Lane 6 : IMR-32 (Human neuroblastoma neuroblast) cells nuclear fraction

Lysates/proteins at 20 µg per lane.

Secondary

All lanes : Goat Anti-Rabbit IgG H&L (HRP) ([ab97051](#)) at 1/20000 dilution

Predicted band size: 50 kDa

Observed band size: 50 kDa

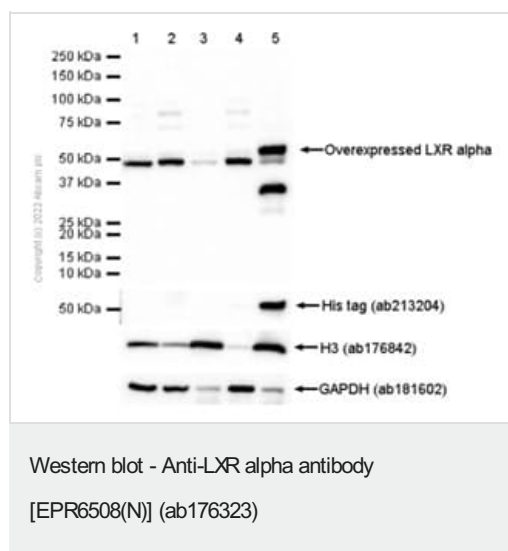
Exposure time: 7 seconds

Blocking buffer and concentration: 5% NFDM/TBST

Diluting buffer and concentration: 5% NFDM/TBST

Ab176323 detects a higher band in nuclear fraction than in non-nuclear fraction, which might be the correct band of interest.

[ab176842](#) and [ab181602](#) were used as loading controls.



All lanes : Anti-LXR alpha antibody [EPR6508(N)] (ab176323) at 1/1000 dilution

Lane 1 : HEK 293 transfected with blank vectors, whole cell lysate

Lane 2 : HEK 293 transfected with blank vectors, non-nuclear fraction

Lane 3 : HEK 293 transfected with blank vectors, nuclear fraction

Lane 4 : HEK 293 transfected with His tagged human LXR alpha full length expression vectors, non-nuclear fraction

Lane 5 : HEK 293 transfected with His tagged human LXR alpha full length expression vectors, nuclear fraction

Lysates/proteins at 20 µg per lane.

Secondary

All lanes : Goat Anti-Rabbit IgG H&L (HRP) ([ab97051](#)) at 1/20000 dilution

Predicted band size: 50 kDa

Observed band size: 50 kDa

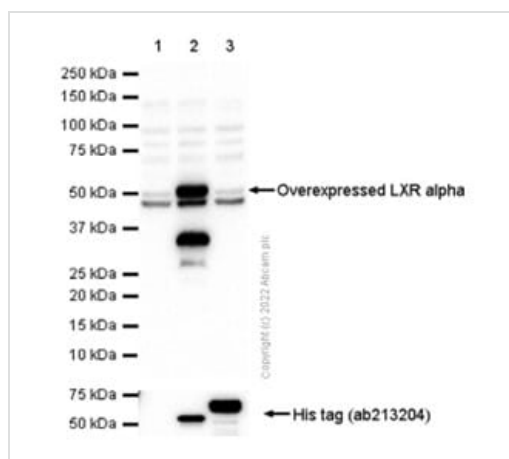
Exposure time: 10 seconds

Blocking buffer and concentration: 5% NFDM/TBST

Diluting buffer and concentration: 5% NFDM/TBST

Ab176323 detects a higher band in nuclear fraction than in non-nuclear fraction, which might be the correct band of interest.

[ab213204](#), [ab176842](#) and [ab181602](#) were used as loading controls.



Western blot - Anti-LXR alpha antibody
[EPR6508(N)] (ab176323)

All lanes : Anti-LXR alpha antibody [EPR6508(N)] (ab176323) at 1/1000 dilution

Lane 1 : HEK 293 transfected with blank vectors, whole cell lysate

Lane 2 : HEK 293 transfected with His tagged human LXR alpha full length expression vectors, whole cell lysate

Lane 3 : HEK 293 transfected with His tagged human LXR beta full length expression vectors, whole cell lysate

Lysates/proteins at 20 µg per lane.

Secondary

All lanes : Goat Anti-Rabbit IgG H&L (HRP) (**ab97051**) at 1/20000 dilution

Predicted band size: 50 kDa

Observed band size: 50 kDa

Exposure time: 3 seconds





Blocking buffer and concentration: 5% NFDM/TBST

Diluting buffer and concentration: 5% NFDM/TBST

Ab176323 does not cross activate with human LXR beta.

ab213204 was used as loading control.

Why choose a recombinant antibody?

 <p>Research with confidence Consistent and reproducible results</p>	 <p>Long-term and scalable supply Recombinant technology</p>
 <p>Success from the first experiment Confirmed specificity</p>	 <p>Ethical standards compliant Animal-free production</p>

Anti-LXR alpha antibody [EPR6508(N)] (ab176323)

Please note: All products are "FOR RESEARCH USE ONLY. NOT FOR USE IN DIAGNOSTIC PROCEDURES"

Our Abpromise to you: Quality guaranteed and expert technical support

- Replacement or refund for products not performing as stated on the datasheet
- Valid for 12 months from date of delivery
- Response to your inquiry within 24 hours

- We provide support in Chinese, English, French, German, Japanese and Spanish
- Extensive multi-media technical resources to help you
- We investigate all quality concerns to ensure our products perform to the highest standards

If the product does not perform as described on this datasheet, we will offer a refund or replacement. For full details of the Abpromise, please visit <https://www.abcam.cn/abpromise> or contact our technical team.

Terms and conditions

- Guarantee only valid for products bought direct from Abcam or one of our authorized distributors