

Anti-LTV1 antibody ab122100

★★★★☆ [1 Abreviews](#) [2 References](#) [3 图像](#)

概述

产品名称	Anti-LTV1抗体
描述	兔多克隆抗体to LTV1
宿主	Rabbit
经测试应用	适用于: IHC-P, WB, ICC/IF
种属反应性	与反应: Human
免疫原	antigen sequence: LEGSIQVDSN RLQEVLNDDY KEKAENCVKL NTLEPLEDQD LPMNELDESE EEEMITVLE EAKEKWDCE ICSTYSNLYN HPQLIKYQPK PKQ, corresponding to amino acids of Human LTV1. Run BLAST with ExPASy Run BLAST with NCBI
阳性对照	Human placenta tissue; RT 4, U 251 MG and Human tonsil lysates; U 251MG cells.
常规说明	<p>The Life Science industry has been in the grips of a reproducibility crisis for a number of years. Abcam is leading the way in addressing this with our range of recombinant monoclonal antibodies and knockout edited cell lines for gold-standard validation. Please check that this product meets your needs before purchasing.</p> <p>If you have any questions, special requirements or concerns, please send us an inquiry and/or contact our Support team ahead of purchase. Recommended alternatives for this product can be found below, along with publications, customer reviews and Q&As</p>

性能

形式	Liquid
存放说明	Shipped at 4°C. Upon delivery aliquot and store at -20°C. Avoid freeze / thaw cycles.
存储溶液	pH: 7.20 Preservative: 0.02% Sodium azide Constituents: 59% PBS, 40% Glycerol (glycerin, glycerine)
纯度	Immunogen affinity purified
克隆	多克隆
同种型	IgG

应用

The Abpromise guarantee

Abpromise™ 承诺保证使用 ab122100 于以下的经测试应用

“应用说明”部分下显示的仅为推荐的起始稀释度；实际最佳的稀释度/浓度应由使用者检定。

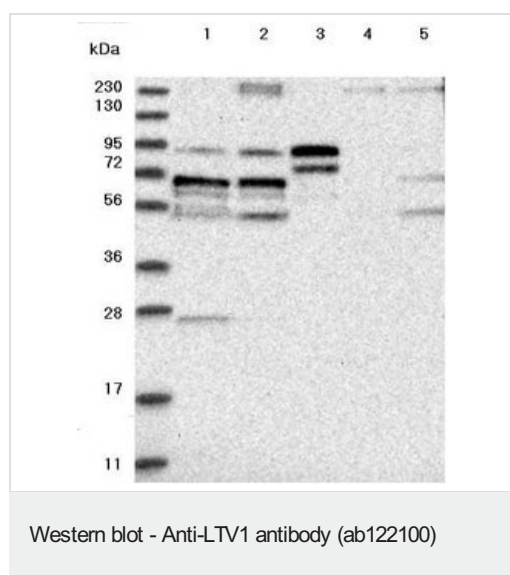
应用	Ab评论	说明
IHC-P		1/200 - 1/500. Perform heat mediated antigen retrieval with citrate buffer pH 6 before commencing with IHC staining protocol.
WB	★★★★★ (1)	Use a concentration of 0.04 - 0.4 µg/ml.
ICC/IF		Use a concentration of 0.25 - 2 µg/ml.

靶标

序列相似性

Belongs to the LTV1 family.

图片



All lanes : Anti-LTV1 antibody (ab122100) at 1/250 dilution

Lane 1 : RT 4 cell line lysate

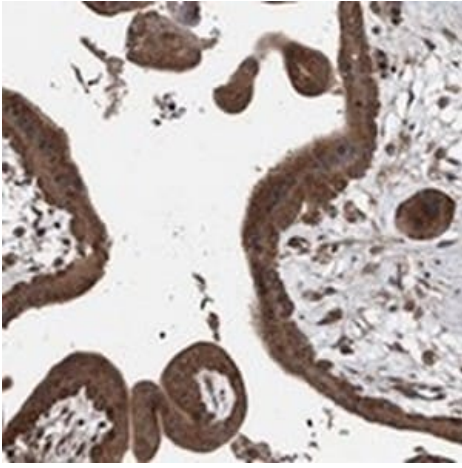
Lane 2 : U 251 MG cell line lysate

Lane 3 : Human plasma

Lane 4 : Human liver tissue lysate

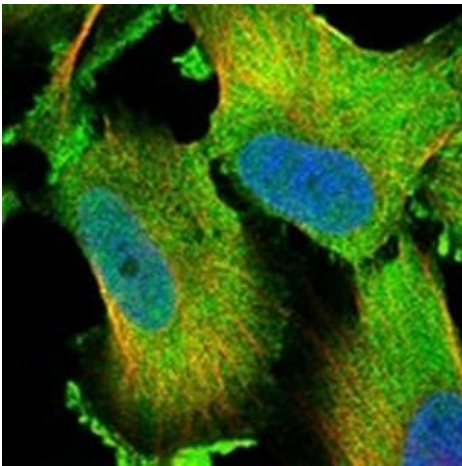
Lane 5 : Human tonsil tissue lysate

Developed using the ECL technique.



ab122100, at 1/200, staining LTV1 in paraffin embedded Human placenta tissue by Immunohistochemistry.

Immunohistochemistry (Formalin/PFA-fixed paraffin-embedded sections) - Anti-LTV1 antibody (ab122100)



ab122100, at 4 µg/ml, staining LTV1 in PFA/Triton X-100 fixed/permeabilized U 251 MG cells by Immunofluorescence (green).

Immunocytochemistry/ Immunofluorescence - Anti-LTV1 antibody (ab122100)

Please note: All products are "FOR RESEARCH USE ONLY. NOT FOR USE IN DIAGNOSTIC PROCEDURES"

Our Abpromise to you: Quality guaranteed and expert technical support

- Replacement or refund for products not performing as stated on the datasheet
- Valid for 12 months from date of delivery
- Response to your inquiry within 24 hours
- We provide support in Chinese, English, French, German, Japanese and Spanish
- Extensive multi-media technical resources to help you
- We investigate all quality concerns to ensure our products perform to the highest standards

If the product does not perform as described on this datasheet, we will offer a refund or replacement. For full details of the Abpromise, please visit <https://www.abcam.cn/abpromise> or contact our technical team.

Terms and conditions

- Guarantee only valid for products bought direct from Abcam or one of our authorized distributors