

Anti-LTBP2 antibody ab121193

★★★★☆ [3 Abreviews](#) [10 References](#) [2 图像](#)

概述

产品名称	Anti-LTBP2抗体
描述	兔多克隆抗体to LTBP2
宿主	Rabbit
经测试应用	适用于: ICC, IHC-P
种属反应性	与反应: Human
免疫原	antigen sequence, corresponding to internal sequence amino acids 241-376 of Human LTBP2.
阳性对照	IHC-P: Human lung tissue; ICC: U-2 OS cells.
常规说明	<p>The Life Science industry has been in the grips of a reproducibility crisis for a number of years. Abcam is leading the way in addressing this with our range of recombinant monoclonal antibodies and knockout edited cell lines for gold-standard validation. Please check that this product meets your needs before purchasing.</p> <p>If you have any questions, special requirements or concerns, please send us an inquiry and/or contact our Support team ahead of purchase. Recommended alternatives for this product can be found below, along with publications, customer reviews and Q&As</p>

性能

形式	Liquid
存放说明	Shipped at 4°C. Upon delivery aliquot and store at -20°C. Avoid freeze / thaw cycles.
存储溶液	pH: 7.20 Preservative: 0.02% Sodium azide Constituents: 59% PBS, 40% Glycerol (glycerin, glycerine)
纯度	Immunogen affinity purified
克隆	多克隆
同种型	IgG

应用

The Abpromise guarantee **Abpromise™** 承诺保证使用ab121193于以下的经测试应用

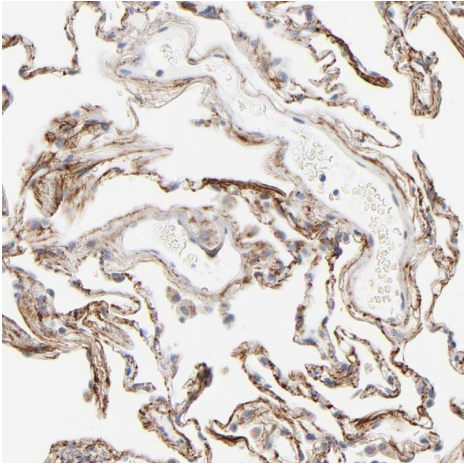
“应用说明”部分 下显示的仅为推荐的起始稀释度;实际最佳的稀释度/浓度应由使用者检定。

应用	Ab评论	说明
ICC		Use a concentration of 0.25 - 2 µg/ml.
IHC-P		1/500 - 1/1000. Perform heat mediated antigen retrieval with citrate buffer pH 6 before commencing with IHC staining protocol.

靶标

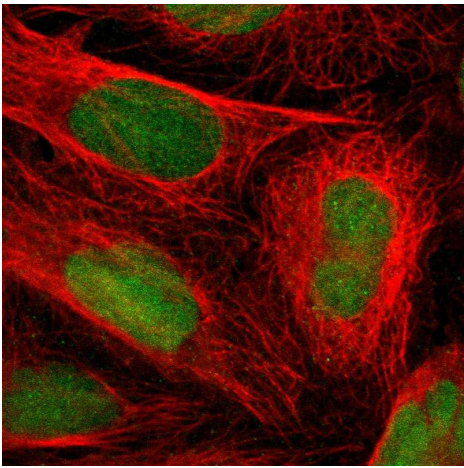
功能	May play an integral structural role in elastic-fiber architectural organization and/or assembly.
组织特异性	Expressed in lung, weakly expressed in heart, placenta, liver and skeletal muscle.
疾病相关	<p>Defects in LTBP2 are the cause of primary congenital glaucoma type 3D (GLC3D) [MIM:613086]. An autosomal recessive form of primary congenital glaucoma (PCG). PCG is characterized by marked increase of intraocular pressure at birth or early childhood, large ocular globes (buphthalmos) and corneal edema. It results from developmental defects of the trabecular meshwork and anterior chamber angle of the eye that prevent adequate drainage of aqueous humor.</p> <p>Defects in LTBP2 are the cause of microspherophakia (MCSPH) [MIM:251750]. It is a rare disease characterized by smaller and more spherical lenses than normal bilaterally, an increased anteroposterior thickness of the lens and highly myopic eyes. Lens dislocation or subluxation may occur, leading to defective accommodation.</p>
序列相似性	<p>Belongs to the LTBP family.</p> <p>Contains 20 EGF-like domains.</p> <p>Contains 4 TB (TGF-beta binding) domains.</p>
结构域	Associates covalently with small latent TGF-beta complex via Repeat B and Repeat C.
翻译后修饰	Contains hydroxylated asparagine residues.
细胞定位	Secreted. Localized in nuchal ligament and aorta to the fibrillin-containing, microfibrillar component of elastic fibers.

图片



Immunohistochemistry (Formalin/PFA-fixed paraffin-embedded sections) - Anti-LTBP2 antibody (ab121193)

Immunohistochemistry (Formalin/PFA-fixed paraffin-embedded sections) analysis of human lung tissue labelling MLTBP2 with ab121193 at 1/500 dilution. Heat mediated antigen retrieval performed with citrate buffer pH 6 before commencing with IHC staining protocol.



Immunocytochemistry - Anti-LTBP2 antibody (ab121193)

Immunocytochemistry analysis of U-2 OS (human bone osteosarcoma epithelial cell line) cells labelling MLTBP2 with ab121193 at 2 µg/mL.

Please note: All products are "FOR RESEARCH USE ONLY. NOT FOR USE IN DIAGNOSTIC PROCEDURES"

Our Abpromise to you: Quality guaranteed and expert technical support

- Replacement or refund for products not performing as stated on the datasheet
- Valid for 12 months from date of delivery
- Response to your inquiry within 24 hours
- We provide support in Chinese, English, French, German, Japanese and Spanish
- Extensive multi-media technical resources to help you
- We investigate all quality concerns to ensure our products perform to the highest standards

If the product does not perform as described on this datasheet, we will offer a refund or replacement. For full details of the Abpromise, please visit <https://www.abcam.cn/abpromise> or contact our technical team.

Terms and conditions

- Guarantee only valid for products bought direct from Abcam or one of our authorized distributors