

Anti-LRRC4C antibody ab111572

★★★★★ [2 Abreviews](#) [3 图像](#)

概述

| | |
|-------|---|
| 产品名称 | Anti-LRRC4C抗体 |
| 描述 | 兔多克隆抗体to LRRC4C |
| 宿主 | Rabbit |
| 经测试应用 | 适用于: WB, ICC/IF, IHC-P |
| 种属反应性 | 与反应: Human 预测可用于: Mouse, Rat, Zebrafish  |
| 免疫原 | Recombinant fragment corresponding to Human LRRC4C aa 5-195. |
| 阳性对照 | NT2D1, IMR32, U-87 MG and MCF7 cells and whole cell lysates; Human breast cancer tissue. |
| 常规说明 | <p>The Life Science industry has been in the grips of a reproducibility crisis for a number of years. Abcam is leading the way in addressing this with our range of recombinant monoclonal antibodies and knockout edited cell lines for gold-standard validation. Please check that this product meets your needs before purchasing.</p> <p>If you have any questions, special requirements or concerns, please send us an inquiry and/or contact our Support team ahead of purchase. Recommended alternatives for this product can be found below, along with publications, customer reviews and Q&As</p> |

性能

| | |
|------|--|
| 形式 | Liquid |
| 存放说明 | Shipped at 4°C. Upon delivery aliquot and store at -20°C or -80°C. Avoid repeated freeze / thaw cycles. |
| 存储溶液 | <p>pH: 7.00</p> <p>Preservative: 0.01% Thimerosal (merthiolate)</p> <p>Constituents: 1.21% Tris, 0.75% Glycine, 20% Glycerol (glycerin, glycerine)</p> |
| 纯度 | Immunogen affinity purified |
| 克隆 | 多克隆 |
| 同种型 | IgG |

应用

The Abpromise guarantee

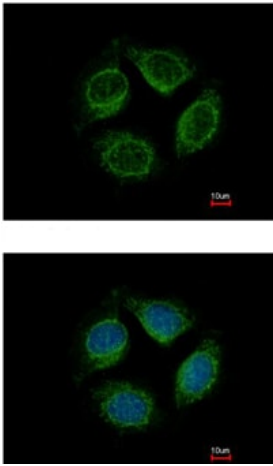
Abpromise™承诺保证使用ab111572于以下的经测试应用

“应用说明”部分 下显示的仅为推荐的起始稀释度;实际最佳的稀释度/浓度应由使用者检定。

| 应用 | Ab评论 | 说明 |
|--------|------|--|
| WB | | 1/500 - 1/3000. Predicted molecular weight: 72 kDa. |
| ICC/IF | | 1/100 - 1/500. |
| IHC-P | | 1/100 - 1/500. Perform heat mediated antigen retrieval with citrate buffer pH 6 before commencing with IHC staining protocol. Alternative antigen retrieval method: heat mediated Tris-EDTA buffer, pH 8.0 |

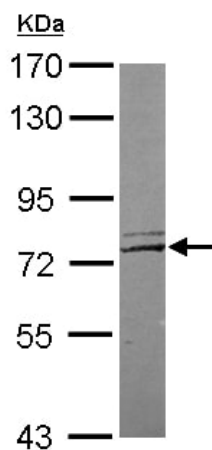
| | |
|-------|---|
| 靶标 | |
| 功能 | May promote neurite outgrowth of developing thalamic neurons. |
| 组织特异性 | Highly expressed in the cerebral cortex, including frontal, parietal and occipital lobes. Putamen, amygdala, hippocampus and medulla oblongata show moderate expression. Caudate nucleus and thalamus express small amounts, whereas other brain regions show very weak or no expression. |
| 序列相似性 | Contains 1 Ig-like C2-type (immunoglobulin-like) domain. Contains 9 LRR (leucine-rich) repeats. Contains 1 LRRCT domain. Contains 1 LRRNT domain. |
| 结构域 | The LRR region is both necessary and sufficient for the interaction with NTNG1. |
| 细胞定位 | Cell junction, synapse, postsynaptic cell membrane. |

图片



ab111572 at 1/500 dilution staining LRRC4C in methanol-fixed MCF7 cells by Immunofluorescence. Lower image shows cells co-stained with Hoechst 33342.

Immunocytochemistry/ Immunofluorescence - Anti-LRRC4C antibody (ab111572)

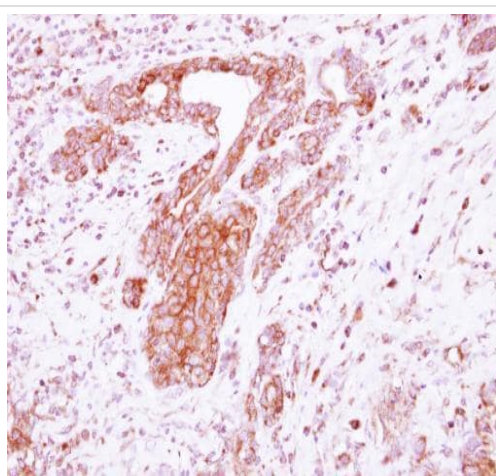


Western blot - Anti-LRRC4C antibody (ab111572)

Anti-LRRC4C antibody (ab111572) at 1/2000 dilution + MCF7 whole cell lysate at 30 µg

Predicted band size: 72 kDa

7.5% SDS-PAGE.



Immunohistochemistry (Formalin/PFA-fixed paraffin-embedded sections) - Anti-LRRC4C antibody (ab111572)

Paraffin-embedded human breast cancer tissue stained for LRRC4C using ab111572 at 1/250 dilution in Immunohistochemical analysis.

Please note: All products are "FOR RESEARCH USE ONLY. NOT FOR USE IN DIAGNOSTIC PROCEDURES"

Our Abpromise to you: Quality guaranteed and expert technical support

- Replacement or refund for products not performing as stated on the datasheet
- Valid for 12 months from date of delivery
- Response to your inquiry within 24 hours
- We provide support in Chinese, English, French, German, Japanese and Spanish
- Extensive multi-media technical resources to help you
- We investigate all quality concerns to ensure our products perform to the highest standards

If the product does not perform as described on this datasheet, we will offer a refund or replacement. For full details of the Abpromise, please visit <https://www.abcam.cn/abpromise> or contact our technical team.

Terms and conditions

- Guarantee only valid for products bought direct from Abcam or one of our authorized distributors