

# Anti-LRP6 (phospho S1490) + LRP5 (phospho S1503) antibody [EP2360Y] ab76417

**重组 RabMAb**

## 4 References 3 图像

### 概述

产品名称	Anti-LRP6 (phospho S1490) + LRP5 (phospho S1503)抗体[EP2360Y]
描述	兔单克隆抗体[EP2360Y] to LRP6 (phospho S1490) + LRP5 (phospho S1503)
宿主	Rabbit
经测试应用	<b>适用于:</b> WB <b>不适用于:</b> ICC/IF
种属反应性	<b>与反应:</b> Human
免疫原	Synthetic peptide. This information is proprietary to Abcam and/or its suppliers.
阳性对照	WB: HeLa cell lysates treated with Calyculin, 293T transfected with LRP6 and LRP5 overexpression vector whole cell lysates.
常规说明	<p>This product is a recombinant monoclonal antibody, which offers several advantages including:</p> <ul style="list-style-type: none"><li>- High batch-to-batch consistency and reproducibility</li><li>- Improved sensitivity and specificity</li><li>- Long-term security of supply</li><li>- Animal-free production</li></ul> <p>For more information <a href="#">see here</a>.</p> <p>Our RabMAb<sup>®</sup> technology is a patented hybridoma-based technology for making rabbit monoclonal antibodies. For details on our patents, please refer to <a href="#">RabMAb<sup>®</sup> patents</a>.</p> <p>Mouse, Rat: We have preliminary internal testing data to indicate this antibody may not react with these species. Please contact us for more information.</p>

### 性能

形式	Liquid
存放说明	Shipped at 4°C. Upon delivery aliquot and store at -20°C. Avoid freeze / thaw cycles.
存储溶液	pH: 7.20 Preservative: 0.01% Sodium azide Constituents: 59% PBS, 40% Glycerol (glycerin, glycerine), 0.05% BSA
纯度	Protein A purified

克隆	单克隆
克隆编号	EP2360Y
同种型	IgG

## 应用

**The Abpromise guarantee**      **Abpromise™** 承诺保证使用 ab76417 于以下的经测试应用

“应用说明”部分下显示的仅为推荐的起始稀释度；实际最佳的稀释度/浓度应由使用者检定。

应用	Ab 评论	说明
WB		1/500 - 1/10000. Predicted molecular weight: 179 kDa.

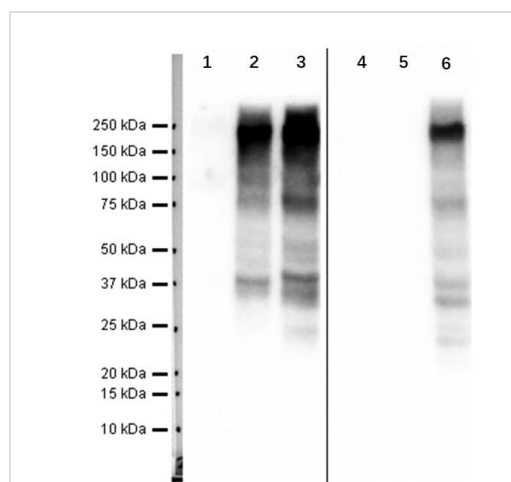
**应用说明**      Is unsuitable for ICC/IF.

## 靶标

### 细胞定位

LRP6: Membrane. Endoplasmic reticulum. On Wnt signaling, undergoes a cycle of caveolin- or clathrin-mediated endocytosis and plasma membrane location. Released from the endoplasmic reticulum on palmitoylation. Mono-ubiquitination retains it in the endoplasmic reticulum in the absence of palmitoylation. On Wnt signaling, phosphorylated, aggregates and colocalizes with AXIN1 and GSK3B at the plasma membrane in LRP6-signalsomes. Chaperoned to the plasma membrane by MESD. LRP5: Membrane. Endoplasmic reticulum. Chaperoned to the plasma membrane by MESD.

## 图片



Western blot - Anti-LRP6 (phospho S1490) + LRP5 (phospho S1503) antibody [EP2360Y] (ab76417)

**Lanes 1-3 :** Anti-LRP6 (phospho S1490) + LRP5 (phospho S1503) antibody [EP2360Y] (ab76417) at 1/10000 dilution

**Lanes 4-6 :** Anti-LRP5 antibody [EPR22477-218] (**ab223203**) at 1/10000 dilution

**Lanes 1 & 4 :** 293T transfected with blank vector whole cell lysate

**Lanes 2 & 5 :** 293T transfected with LRP6 overexpression vector whole cell lysate

**Lanes 3 & 6 :** 293T transfected with LRP5 overexpression vector whole cell lysate

Lysates/proteins at 20 µg per lane.

### Secondary

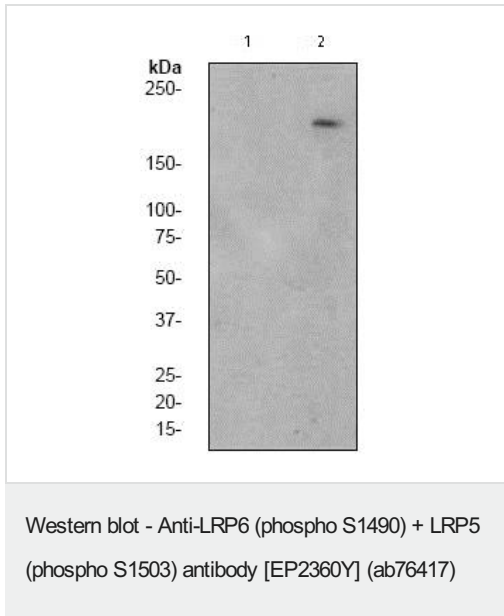
**All lanes :** Goat Anti-Rabbit IgG H&L (HRP) (**ab97051**) at 1/100000 dilution

**Predicted band size:** 179 kDa

**Observed band size:** 180 kDa

**Exposure time:** 180 seconds

**Blocking and dilution buffer:** 5%NFDM/TBST.



**All lanes :** Anti-LRP6 (phospho S1490) + LRP5 (phospho S1503) antibody [EP2360Y] (ab76417) at 1/1000 dilution

**Lane 1 :** HeLa cell lysates, untreated

**Lane 2 :** HeLa cell lysates treated with Calyculin

Lysates/proteins at 10 µg per lane.

**Secondary**

**All lanes :** HRP labelled goat anti-rabbit at 1/2000 dilution

**Predicted band size:** 179 kDa

**Observed band size:** 210 kDa

Why choose a recombinant antibody?

- Research with confidence**  
Consistent and reproducible results
- Long-term and scalable supply**  
Recombinant technology
- Success from the first experiment**  
Confirmed specificity
- Ethical standards compliant**  
Animal-free production

Anti-LRP6 (phospho S1490) + LRP5 (phospho S1503) antibody [EP2360Y] (ab76417)

**Please note:** All products are "FOR RESEARCH USE ONLY. NOT FOR USE IN DIAGNOSTIC PROCEDURES"

**Our Abpromise to you: Quality guaranteed and expert technical support**

- Replacement or refund for products not performing as stated on the datasheet
- Valid for 12 months from date of delivery
- Response to your inquiry within 24 hours
  
- We provide support in Chinese, English, French, German, Japanese and Spanish
- Extensive multi-media technical resources to help you
- We investigate all quality concerns to ensure our products perform to the highest standards

If the product does not perform as described on this datasheet, we will offer a refund or replacement. For full details of the Abpromise, please visit <https://www.abcam.cn/abpromise> or contact our technical team.

### **Terms and conditions**

---

- Guarantee only valid for products bought direct from Abcam or one of our authorized distributors