




Anti-LRP4 antibody ab85697

3 References **1 图像**

概述

产品名称	Anti-LRP4抗体
描述	山羊多克隆抗体to LRP4
宿主	Goat
经测试应用	适用于: WB
种属反应性	与反应: Human 预测可用于: Mouse, Rat, Cow 
免疫原	Synthetic peptide: C-SNPSYRTSTQEVK , corresponding to internal sequence amino acids 1765-1777 of Human LRP4 (NP_002325.2).  Run BLAST with  Run BLAST with
阳性对照	Human brain (cerebral cortex) lysate.
常规说明	<p>The Life Science industry has been in the grips of a reproducibility crisis for a number of years. Abcam is leading the way in addressing this with our range of recombinant monoclonal antibodies and knockout edited cell lines for gold-standard validation. Please check that this product meets your needs before purchasing.</p> <p>If you have any questions, special requirements or concerns, please send us an inquiry and/or contact our Support team ahead of purchase. Recommended alternatives for this product can be found below, along with publications, customer reviews and Q&As</p>

性能

形式	Liquid
存放说明	Shipped at 4°C. Upon delivery aliquot and store at -20°C. Avoid freeze / thaw cycles.
存储溶液	pH: 7.30 Preservative: 0.02% Sodium azide Constituents: 0.5% Tris buffered saline, 0.5% BSA
纯度	Immunogen affinity purified
纯化说明	ab85697 was purified from goat serum by ammonium sulphate precipitation followed by antigen affinity chromatography using the immunizing peptide.
克隆	多克隆

同种型IgG

应用

The Abpromise guarantee **Abpromise™**承诺保证使用ab85697于以下的经测试应用

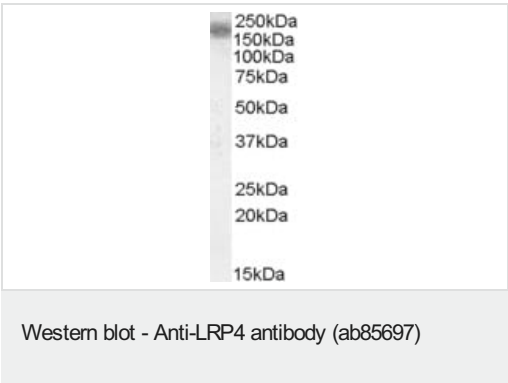
“应用说明”部分 下显示的仅为推荐的起始稀释度;实际最佳的稀释度/浓度应由使用者检定。

应用	Ab评论	说明
WB		Use a concentration of 0.1 - 0.3 µg/ml. Detects a band of approximately 200 kDa (predicted molecular weight: 216 kDa). 1 hour primary incubation is recommended for this product.

靶标

功能	Potential cell surface endocytic receptor, which binds and internalizes extracellular ligands for degradation by lysosomes. Involved in the negative regulation of the canonical Wnt signaling pathway, being able to antagonize the LRP6-mediated activation of this pathway.
组织特异性	Expressed in several regions of the brain.
疾病相关	Defects in LRP4 are the cause of Cenani-Lenz syndactyly syndrome (CLSS) [MIM:212780]. It is a congenital malformation syndrome defined as complete and complex syndactyly of the hands combined with malformations of the forearm bones and similar manifestations in the lower limbs.
序列相似性	Belongs to the LDLR family. Contains 3 EGF-like domains. Contains 8 LDL-receptor class A domains. Contains 20 LDL-receptor class B repeats.
细胞定位	Membrane.

图片



Anti-LRP4 antibody (ab85697) at 0.1 µg/ml + Human cerebral cortex lysate (in RIPA buffer) at 35 µg

Predicted band size: 216 kDa
Observed band size: 200 kDa

Primary incubation was 1 hour. Detected by chemiluminescence.

Please note: All products are "FOR RESEARCH USE ONLY. NOT FOR USE IN DIAGNOSTIC PROCEDURES"

Our Abpromise to you: Quality guaranteed and expert technical support

-
- Replacement or refund for products not performing as stated on the datasheet
 - Valid for 12 months from date of delivery
 - Response to your inquiry within 24 hours

 - We provide support in Chinese, English, French, German, Japanese and Spanish
 - Extensive multi-media technical resources to help you
 - We investigate all quality concerns to ensure our products perform to the highest standards

If the product does not perform as described on this datasheet, we will offer a refund or replacement. For full details of the Abpromise, please visit <https://www.abcam.cn/abpromise> or contact our technical team.

Terms and conditions

- Guarantee only valid for products bought direct from Abcam or one of our authorized distributors