

Anti-LRP16 antibody ab122688

[1 Abreviews](#) [2 References](#) [2 图像](#)

概述

产品名称	Anti-LRP16抗体
描述	兔多克隆抗体to LRP16
宿主	Rabbit
经测试应用	适用于: ICC/IF, IHC-P
种属反应性	与反应: Human
免疫原	Recombinant fragment corresponding to Human LRP16. Sequence: SFLKGLSDKQREEHYFCKDFVRLKKIPTWKEMAKGVAVKVEE PRYKKDKQ LNEKISLLRSDITKLEV Run BLAST with Run BLAST with
阳性对照	Human colon tissue.
常规说明	<p>The Life Science industry has been in the grips of a reproducibility crisis for a number of years. Abcam is leading the way in addressing this with our range of recombinant monoclonal antibodies and knockout edited cell lines for gold-standard validation. Please check that this product meets your needs before purchasing.</p> <p>If you have any questions, special requirements or concerns, please send us an inquiry and/or contact our Support team ahead of purchase. Recommended alternatives for this product can be found below, along with publications, customer reviews and Q&As</p>

性能

形式	Liquid
存放说明	Shipped at 4°C. Upon delivery aliquot and store at -20°C. Avoid freeze / thaw cycles.
存储溶液	pH: 7.20 Preservative: 0.02% Sodium azide Constituents: 40% Glycerol (glycerin, glycerine), 59% PBS
纯度	Immunogen affinity purified
克隆	多克隆
同种型	IgG

应用

The Abpromise guarantee **Abpromise™**承诺保证使用ab122688于以下的经测试应用

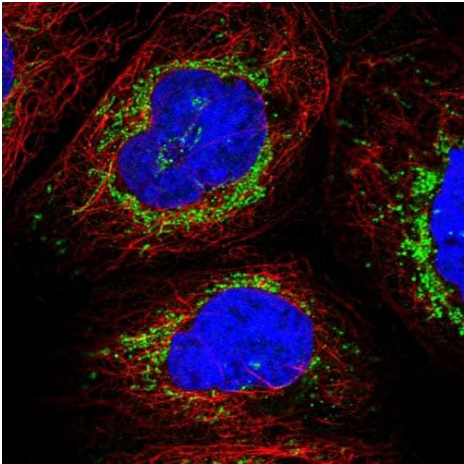
“应用说明”部分 下显示的仅为推荐的起始稀释度;实际最佳的稀释度/浓度应由使用者检定。

应用	Ab评论	说明
ICC/IF		Use a concentration of 1 - 4 µg/ml. Recommend PFA Fixation and Triton X-100 treatment
IHC-P		1/200 - 1/500. Perform heat mediated antigen retrieval with citrate buffer pH 6 before commencing with IHC staining protocol.

靶标

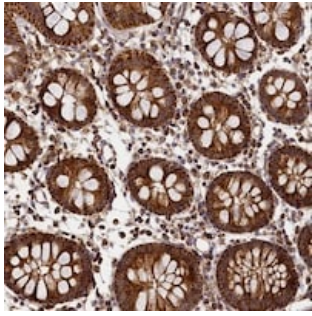
功能	Plays a role in estrogen signaling. Binds to androgen receptor (AR) and amplifies the transactivation function of AR in response to androgen. May play an important role in carcinogenesis and/or progression of hormone-dependent cancers by feed-forward mechanism that activates ESR1 transactivation. Could be an ESR1 coactivator, providing a positive feedback regulatory loop for ESR1 signal transduction. Could be involved in invasive growth by down-regulating CDH1 in endometrial cancer cells. Enhances ESR1-mediated transcription activity.
疾病相关	Note=A chromosomal aberration involving MACROD1 is found in acute leukemia. Translocation t(11;21)(q13;q22) that forms a RUNX1-MACROD1 fusion protein.
序列相似性	Contains 1 Macro domain.

图片



Immunocytochemistry/ Immunofluorescence - Anti-LRP16 antibody (ab122688)

Immunofluorescent staining of Human cell line A-431 shows positivity in mitochondria. Recommended concentration of ab122688 1-4 µg/ml. Cells treated with PFA/Triton X-100.



ab122688, at 1/200 dilution, staining LRP16 in paraffin-embedded Human colon tissue by Immunohistochemistry.

Immunohistochemistry (Formalin/PFA-fixed paraffin-embedded sections) - Anti-LRP16 antibody (ab122688)

Please note: All products are "FOR RESEARCH USE ONLY. NOT FOR USE IN DIAGNOSTIC PROCEDURES"

Our Abpromise to you: Quality guaranteed and expert technical support

- Replacement or refund for products not performing as stated on the datasheet
- Valid for 12 months from date of delivery
- Response to your inquiry within 24 hours
- We provide support in Chinese, English, French, German, Japanese and Spanish
- Extensive multi-media technical resources to help you
- We investigate all quality concerns to ensure our products perform to the highest standards

If the product does not perform as described on this datasheet, we will offer a refund or replacement. For full details of the Abpromise, please visit <https://www.abcam.cn/abpromise> or contact our technical team.

Terms and conditions

- Guarantee only valid for products bought direct from Abcam or one of our authorized distributors