

Anti-LRFN5 antibody ab106370

1 References 2 图像

| | |
|-------|---|
| 概述 | |
| 产品名称 | Anti-LRFN5抗体 |
| 描述 | 兔多克隆抗体to LRFN5 |
| 宿主 | Rabbit |
| 经测试应用 | 适用于: IHC-P, WB |
| 种属反应性 | 与反应: Mouse |
| 免疫原 | Synthetic peptide corresponding to Human LRFN5 (C terminal). 16 amino acid peptide Database link: Q96NI6 |
| 阳性对照 | EL4 cell lysate, Mouse brain tissue. |
| 常规说明 | <p>The Life Science industry has been in the grips of a reproducibility crisis for a number of years. Abcam is leading the way in addressing this with our range of recombinant monoclonal antibodies and knockout edited cell lines for gold-standard validation. Please check that this product meets your needs before purchasing.</p> <p>If you have any questions, special requirements or concerns, please send us an inquiry and/or contact our Support team ahead of purchase. Recommended alternatives for this product can be found below, along with publications, customer reviews and Q&As</p> |
| 性能 | |
| 形式 | Liquid |
| 存放说明 | Shipped at 4°C. Store at 4°C (stable for up to 12 months). |
| 存储溶液 | pH: 7.2 Preservative: 0.02% Sodium azide Constituent: PBS |
| 纯度 | Immunogen affinity purified |
| 克隆 | 多克隆 |
| 同种型 | IgG |
| 应用 | |

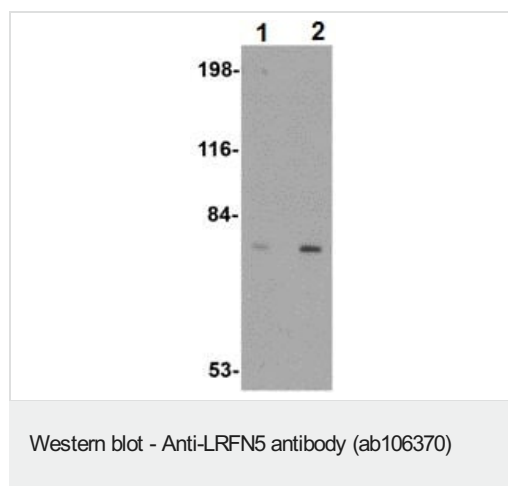
“应用说明”部分 下显示的仅为推荐的起始稀释度;实际最佳的稀释度/浓度应由使用者检定。

| 应用 | Ab评论 | 说明 |
|-------|------|--|
| IHC-P | | Use a concentration of 5 µg/ml. Perform heat mediated antigen retrieval via the microwave method before commencing with IHC staining protocol. |
| WB | | Use a concentration of 0.5 - 1 µg/ml. Predicted molecular weight: 79 kDa. |

靶标

| | |
|-------|--|
| 功能 | Cell adhesion molecule that mediates homophilic cell-cell adhesion in a Ca(2+)-independent manner. Promotes neurite outgrowth in hippocampal neurons. |
| 序列相似性 | Belongs to the LRFN family. Contains 1 fibronectin type-III domain. Contains 1 Ig-like (immunoglobulin-like) domain. Contains 7 LRR (leucine-rich) repeats. Contains 1 LRRCT domain. Contains 1 LRRNT domain. |
| 结构域 | Lacks a cytoplasmic PDZ-binding motif, which has been implicated in function of related LRFN proteins. |
| 细胞定位 | Membrane. |

图片



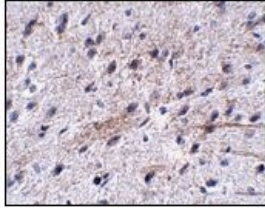
Lane 1 : Anti-LRFN5 antibody (ab106370) at 0.5 µg/ml

Lane 2 : Anti-LRFN5 antibody (ab106370) at 1 µg/ml

All lanes : EL4 cell lysate

Lysates/proteins at 15 µg per lane.

Predicted band size: 79 kDa



ab106370, at 5 ug/ml, staining LRFN5 in Mouse brain tissue by immunohistochemistry.

Immunohistochemistry (Formalin/PFA-fixed paraffin-embedded sections) - Anti-LRFN5 antibody (ab106370)

Please note: All products are "FOR RESEARCH USE ONLY. NOT FOR USE IN DIAGNOSTIC PROCEDURES"

Our Abpromise to you: Quality guaranteed and expert technical support

- Replacement or refund for products not performing as stated on the datasheet
- Valid for 12 months from date of delivery
- Response to your inquiry within 24 hours
- We provide support in Chinese, English, French, German, Japanese and Spanish
- Extensive multi-media technical resources to help you
- We investigate all quality concerns to ensure our products perform to the highest standards

If the product does not perform as described on this datasheet, we will offer a refund or replacement. For full details of the Abpromise, please visit <https://www.abcam.cn/abpromise> or contact our technical team.

Terms and conditions

- Guarantee only valid for products bought direct from Abcam or one of our authorized distributors