

Anti-LRFN1 antibody ab106365

1 References 1 图像

概述	
产品名称	Anti-LRFN1抗体
描述	兔多克隆抗体to LRFN1
宿主	Rabbit
经测试应用	适用于: WB
种属反应性	与反应: Human
免疫原	Synthetic peptide corresponding to Human LRFN1 (C terminal). 18 amino acid peptide Database link: <a href="#">Q9P244</a>
阳性对照	Human brain lysate,
常规说明	<p>The Life Science industry has been in the grips of a reproducibility crisis for a number of years. Abcam is leading the way in addressing this with our range of recombinant monoclonal antibodies and knockout edited cell lines for gold-standard validation. Please check that this product meets your needs before purchasing.</p> <p>If you have any questions, special requirements or concerns, please send us an inquiry and/or contact our Support team ahead of purchase. Recommended alternatives for this product can be found below, along with publications, customer reviews and Q&amp;As</p>
性能	
形式	Liquid
存放说明	Shipped at 4°C. Store at 4°C (stable for up to 12 months).
存储溶液	pH: 7.2 Preservative: 0.02% Sodium azide Constituent: PBS
纯度	Immunogen affinity purified
克隆	多克隆
同种型	IgG
应用	

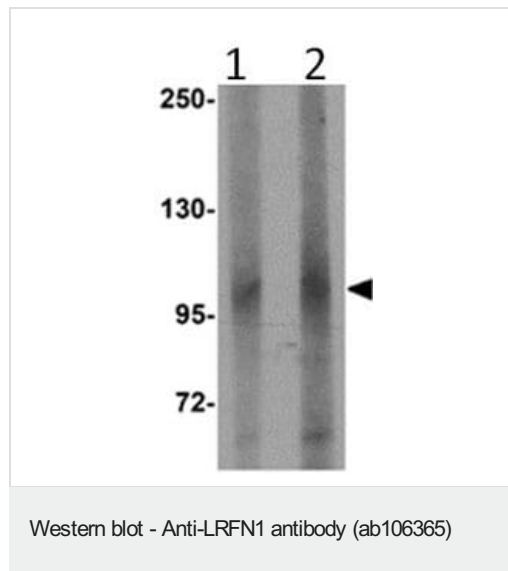
“应用说明”部分 下显示的仅为推荐的起始稀释度;实际最佳的稀释度/浓度应由使用者检定。

应用	Ab评论	说明
WB		Use a concentration of 1 - 2 µg/ml. Predicted molecular weight: 82 kDa.

## 靶标

功能	Promotes neurite outgrowth in hippocampal neurons. Involved in the regulation and maintenance of excitatory synapses. Induces the clustering of excitatory postsynaptic proteins, including DLG4, DLGAP1, GRIA1 and GRIN1.
序列相似性	Belongs to the LRFN family. Contains 1 fibronectin type-III domain. Contains 1 Ig-like (immunoglobulin-like) domain. Contains 7 LRR (leucine-rich) repeats. Contains 1 LRRCT domain. Contains 1 LRRNT domain.
结构域	The PDZ-binding motif is required for neurite outgrowth promotion and for DLG1-, DLG3- and DLG4-binding.
翻译后修饰	Glycosylated.
细胞定位	Membrane. Cell junction, synapse. Cell junction, synapse, postsynaptic cell membrane, postsynaptic density. Detected in excitatory, but not inhibitory, synaptic plasma membrane.

## 图片



**Lane 1 :** Anti-LRFN1 antibody (ab106365) at 1 µg/ml

**Lane 2 :** Anti-LRFN1 antibody (ab106365) at 2 µg/ml

**All lanes :** Human brain lysate

Lysates/proteins at 15 µg per lane.

**Predicted band size:** 82 kDa

**Please note:** All products are "FOR RESEARCH USE ONLY. NOT FOR USE IN DIAGNOSTIC PROCEDURES"

**Our Abpromise to you: Quality guaranteed and expert technical support**

- Replacement or refund for products not performing as stated on the datasheet
- Valid for 12 months from date of delivery
- Response to your inquiry within 24 hours
- We provide support in Chinese, English, French, German, Japanese and Spanish
- Extensive multi-media technical resources to help you
- We investigate all quality concerns to ensure our products perform to the highest standards

If the product does not perform as described on this datasheet, we will offer a refund or replacement. For full details of the Abpromise, please visit <https://www.abcam.cn/abpromise> or contact our technical team.

#### **Terms and conditions**

---

- Guarantee only valid for products bought direct from Abcam or one of our authorized distributors