

Anti-LRBA/BGL antibody ab121601

2 图像

概述

| | |
|-------|---|
| 产品名称 | Anti-LRBA/BGL抗体 |
| 描述 | 兔多克隆抗体to LRBA/BGL |
| 宿主 | Rabbit |
| 经测试应用 | 适用于: ICC/IF, IHC-P |
| 种属反应性 | 与反应: Human |
| 免疫原 | Recombinant fragment corresponding to Human LRBA/BGL aa 1541-1672. |
| 阳性对照 | Human stomach tissue. |
| 常规说明 | <p>The Life Science industry has been in the grips of a reproducibility crisis for a number of years. Abcam is leading the way in addressing this with our range of recombinant monoclonal antibodies and knockout edited cell lines for gold-standard validation. Please check that this product meets your needs before purchasing.</p> <p>If you have any questions, special requirements or concerns, please send us an inquiry and/or contact our Support team ahead of purchase. Recommended alternatives for this product can be found below, along with publications, customer reviews and Q&As</p> |

性能

| | |
|------|--|
| 形式 | Liquid |
| 存放说明 | Shipped at 4°C. Upon delivery aliquot and store at -20°C. Avoid freeze / thaw cycles. |
| 存储溶液 | <p>pH: 7.20</p> <p>Preservative: 0.02% Sodium azide</p> <p>Constituents: 59% PBS, 40% Glycerol (glycerin, glycerine)</p> |
| 纯度 | Immunogen affinity purified |
| 克隆 | 多克隆 |
| 同种型 | IgG |

应用

The Abpromise guarantee

Abpromise™承诺保证使用ab121601于以下的经测试应用

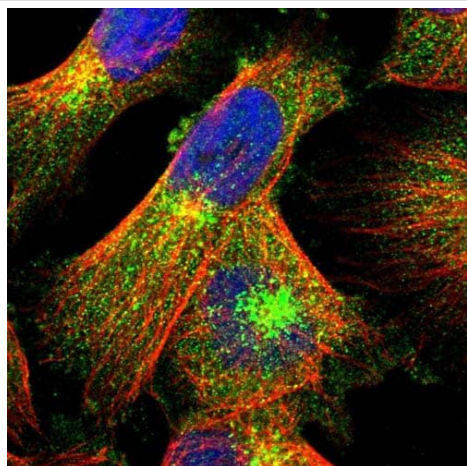
“应用说明”部分 下显示的仅为推荐的起始稀释度;实际最佳的稀释度/浓度应由使用者检定。

| 应用 | Ab评论 | 说明 |
|--------|------|---|
| ICC/IF | | Use a concentration of 0.25 - 2 µg/ml. |
| IHC-P | | 1/200 - 1/500. Perform heat mediated antigen retrieval with citrate buffer pH 6 before commencing with IHC staining protocol. |

靶标

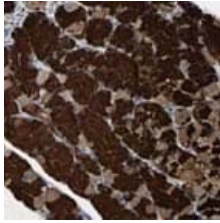
| | |
|-------|--|
| 功能 | May be involved in coupling signal transduction and vesicle trafficking to enable polarized secretion and/or membrane deposition of immune effector molecules. |
| 组织特异性 | Ubiquitous. |
| 序列相似性 | Contains 1 BEACH domain. Contains 6 WD repeats. |
| 翻译后修饰 | Phosphorylated upon DNA damage, probably by ATM or ATR. |
| 细胞定位 | Cell membrane. Endoplasmic reticulum. Golgi apparatus > trans-Golgi network. Lysosome. |

图片



Immunofluorescent staining of Human cell line U-251MG shows positivity in cytoplasm and golgi apparatus. Recommended concentration of ab121601 1-4 µg/ml. Cells treated with PFA/Triton X-100.

Immunocytochemistry/ Immunofluorescence - Anti-LRBA/BGL antibody (ab121601)



ab121601 at 1/200 dilution staining LRBA/BGL in Paraffin-embedded Human Stomach tissue by Immunohistochemistry.
Note: strong cytoplasmic positivity in glandular cells.

Immunohistochemistry (Formalin/PFA-fixed paraffin-embedded sections) - Anti-LRBA/BGL antibody (ab121601)

Please note: All products are "FOR RESEARCH USE ONLY. NOT FOR USE IN DIAGNOSTIC PROCEDURES"

Our Abpromise to you: Quality guaranteed and expert technical support

- Replacement or refund for products not performing as stated on the datasheet
- Valid for 12 months from date of delivery
- Response to your inquiry within 24 hours
- We provide support in Chinese, English, French, German, Japanese and Spanish
- Extensive multi-media technical resources to help you
- We investigate all quality concerns to ensure our products perform to the highest standards

If the product does not perform as described on this datasheet, we will offer a refund or replacement. For full details of the Abpromise, please visit <https://www.abcam.cn/abpromise> or contact our technical team.

Terms and conditions

- Guarantee only valid for products bought direct from Abcam or one of our authorized distributors