

### Anti-LMAN1 antibody ab32583

#### 5 图像

#### 概述

产品名称	Anti-LMAN1抗体
描述	兔多克隆抗体to LMAN1
宿主	Rabbit
经测试应用	适用于: ICC/IF, WB
种属反应性	与反应: Mouse, Rat, Human
免疫原	Synthetic peptide: FDSFDNDGKKNPAI , corresponding to amino acids 159-173 of Rat LMAN1 <a href="#">Run BLAST with</a> <a href="#">Run BLAST with</a>
阳性对照	ICC: p19 cells, HMVEC cells, A549 cells. WB: Rat brain lysate. HepG2, HeLa, PANC-1, and MCF7 lysate.
常规说明	<p>The Life Science industry has been in the grips of a reproducibility crisis for a number of years. Abcam is leading the way in addressing this with our range of recombinant monoclonal antibodies and knockout edited cell lines for gold-standard validation. Please check that this product meets your needs before purchasing.</p> <p>If you have any questions, special requirements or concerns, please send us an inquiry and/or contact our Support team ahead of purchase. Recommended alternatives for this product can be found below, along with publications, customer reviews and Q&amp;As</p>

#### 性能

形式	Liquid
存放说明	Shipped at 4°C. Upon delivery aliquot and store at -20°C. Avoid freeze / thaw cycles.
存储溶液	Preservative: 0.05% Sodium azide Constituents: PBS, 0.1% BSA
纯度	Immunogen affinity purified
克隆	多克隆
同种型	IgG

#### 应用

## The Abpromise guarantee

**Abpromise™** 承诺保证使用 ab32583 于以下的经测试应用

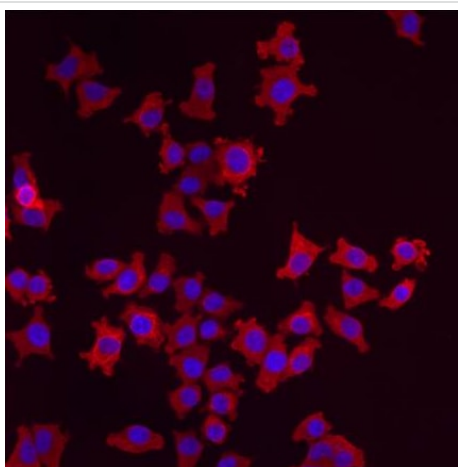
“应用说明”部分 下显示的仅为推荐的起始稀释度;实际最佳的稀释度/浓度应由使用者检定。

应用	Ab评论	说明
ICC/IF		Use at an assay dependent concentration.
WB		1/1000. Detects a band of approximately 57.5 kDa.

## 靶标

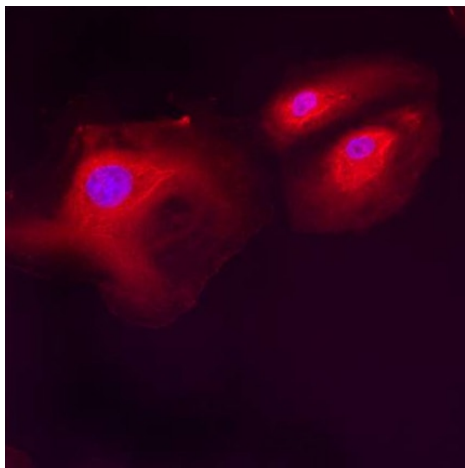
<b>功能</b>	Mannose-specific lectin. May recognize sugar residues of glycoproteins, glycolipids, or glycosylphosphatidyl inositol anchors and may be involved in the sorting or recycling of proteins, lipids, or both. The LMAN1-MCFD2 complex forms a specific cargo receptor for the ER-to-Golgi transport of selected proteins.
<b>组织特异性</b>	Ubiquitous.
<b>疾病相关</b>	Defects in LMAN1 are THE cause of factor V and factor VIII combined deficiency type 1 (F5F8D1) [MIM:227300]; also known as multiple coagulation factor deficiency I (MCFD1). F5F8D1 is an autosomal recessive blood coagulation disorder characterized by bleeding symptoms similar to those in hemophilia or parahemophilia, that are caused by single deficiency of FV or FVIII, respectively. The most common symptoms are epistaxis, menorrhagia, and excessive bleeding during or after trauma. Plasma levels of coagulation factors V and VIII are in the range of 5 to 30% of normal.
<b>序列相似性</b>	Contains 1 L-type lectin-like domain.
<b>翻译后修饰</b>	The N-terminal may be partly blocked.
<b>细胞定位</b>	Endoplasmic reticulum-Golgi intermediate compartment membrane. Golgi apparatus membrane. Endoplasmic reticulum membrane.

## 图片



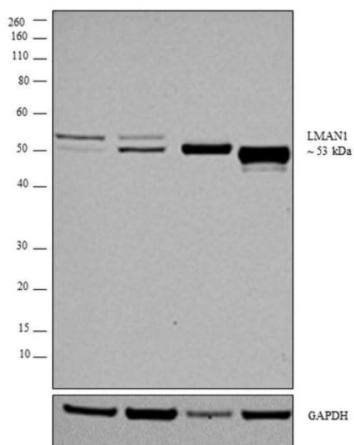
ab32583 labelling LMAN1 in p19 cells by Immunocytochemistry/Immunofluorescence.

Immunocytochemistry/ Immunofluorescence - Anti-LMAN1 antibody (ab32583)



Immunocytochemistry/ Immunofluorescence - Anti-LMAN1 antibody (ab32583)

ab32583 labelling LMAN1 in HMVEC cells by Immunocytochemistry/Immunofluorescence.



Western blot - Anti-LMAN1 antibody (ab32583)

**All lanes** : Anti-LMAN1 antibody (ab32583) at 1/2000 dilution

**Lane 1** : HepG2 lysate

**Lane 2** : HeLa lysate

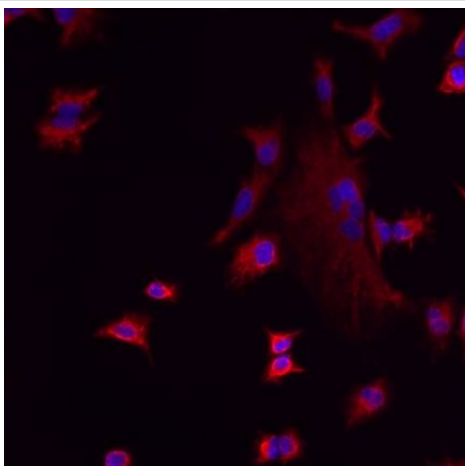
**Lane 3** : PANC-1 lysate

**Lane 4** : MCF7 lysate

Lysates/proteins at 30 µg per lane.

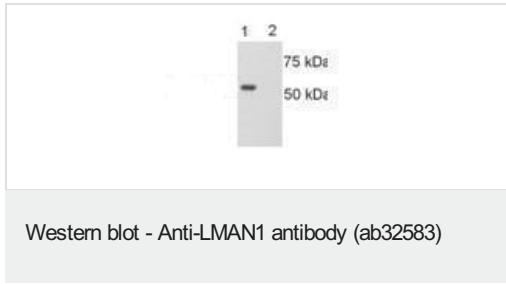
**Secondary**

**All lanes** : Goat anti-Rabbit IgG (H+L) Superclonal™ Secondary Antibody, HRP conjugate at 1/4000 dilution



Immunocytochemistry/ Immunofluorescence - Anti-LMAN1 antibody (ab32583)

ab32583 labelling LMAN1 in A549 cells by Immunocytochemistry/Immunofluorescence.



**All lanes :** Anti-LMAN1 antibody (ab32583) at 1/1000 dilution

**Lane 1 :** Rat brain lysate

**Lane 2 :** Rat brain lysate with Immunising peptide

**Observed band size:** 57.5 kDa

**Please note:** All products are "FOR RESEARCH USE ONLY. NOT FOR USE IN DIAGNOSTIC PROCEDURES"

### **Our Abpromise to you: Quality guaranteed and expert technical support**

---

- Replacement or refund for products not performing as stated on the datasheet
- Valid for 12 months from date of delivery
- Response to your inquiry within 24 hours
- We provide support in Chinese, English, French, German, Japanese and Spanish
- Extensive multi-media technical resources to help you
- We investigate all quality concerns to ensure our products perform to the highest standards

If the product does not perform as described on this datasheet, we will offer a refund or replacement. For full details of the Abpromise, please visit <https://www.abcam.cn/abpromise> or contact our technical team.

### **Terms and conditions**

---

- Guarantee only valid for products bought direct from Abcam or one of our authorized distributors