


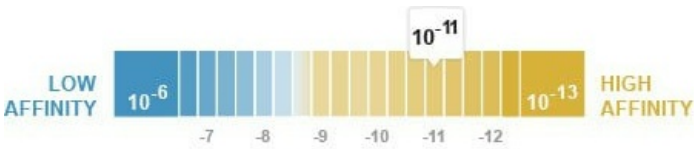
Anti-Lipoamide Dehydrogenase antibody [EPR6634(B)]
ab124926

敲除验证 重组 RabMAb

1 References 5 图像

概述	
产品名称	Anti-Lipoamide Dehydrogenase抗体[EPR6634(B)]
描述	兔单克隆抗体[EPR6634(B)] to Lipoamide Dehydrogenase
宿主	Rabbit
经测试应用	适用于: WB, IHC-P 不适用于: Flow Cyt, ICC/IF or IP
种属反应性	与反应: Human 预测可用于: Mouse, Rat 
免疫原	Synthetic peptide within Human Lipoamide Dehydrogenase aa 50-150. The exact sequence is proprietary.
阳性对照	WB: Jurkat, MCF7, HeLa, and 293T cell lysates. IHC-P: Human colon tissue.
常规说明	This product is a recombinant monoclonal antibody, which offers several advantages including: <ul style="list-style-type: none">- High batch-to-batch consistency and reproducibility- Improved sensitivity and specificity- Long-term security of supply- Animal-free production For more information see here . Our RabMAb [®] technology is a patented hybridoma-based technology for making rabbit monoclonal antibodies. For details on our patents, please refer to RabMAb[®] patents .

性能	
形式	Liquid
存放说明	Shipped at 4°C. Store at -20°C. Stable for 12 months at -20°C.
解离常数 (K _D)	K _D = 8.50 x 10 ⁻¹¹ M



[Learn more about K_D](#)

存储溶液	pH: 7.2 Preservative: 0.05% Sodium azide Constituents: 40% Glycerol (glycerin, glycerine), 9.85% Tris glycine, 50% Tissue culture supernatant
纯度	Protein A purified
克隆	单克隆
克隆编号	EPR6634(B)
同种型	IgG

应用

The Abpromise guarantee **Abpromise™**承诺保证使用ab124926于以下的经测试应用

“应用说明”部分 下显示的仅为推荐的起始稀释度;实际最佳的稀释度/浓度应由使用者检定。

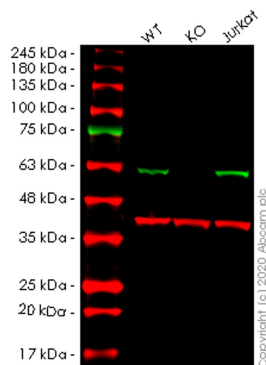
应用	Ab评论	说明
WB		1/1000 - 1/10000. Detects a band of approximately 56 kDa (predicted molecular weight: 54 kDa).
IHC-P		1/100 - 1/250. Perform heat mediated antigen retrieval with citrate buffer pH 6 before commencing with IHC staining protocol.

应用说明 Is unsuitable for Flow Cyt, ICC/IF or IP.

靶标

功能	Lipoamide dehydrogenase is a component of the glycine cleavage system as well as of the alpha-ketoacid dehydrogenase complexes. Involved in the hyperactivation of spermatazoa during capacitation and in the spermatazoal acrosome reaction.
疾病相关	Note=Defects in DLD are involved in the development of congenital infantile lactic acidosis. Defects in DLD are a cause of maple syrup urine disease (MSUD) [MIM:248600]. MSUD is characterized by mental and physical retardation, feeding problems and a maple syrup odor to the urine. The keto acids of the branched-chain amino acids are present in the urine, resulting from a block in oxidative decarboxylation.
序列相似性	Belongs to the class-I pyridine nucleotide-disulfide oxidoreductase family.
翻译后修饰	Tyrosine phosphorylated.
细胞定位	Mitochondrion matrix.

图片



Western blot - Anti-Lipoamide Dehydrogenase antibody [EPR6634(B)] (ab124926)

All lanes : Anti-Lipoamide Dehydrogenase antibody [EPR6634(B)] (ab124926) at 1/1000 dilution

Lane 1 : Wild-type HeLa cell lysate

Lane 2 : DLD knockout HeLa cell lysate

Lane 3 : Jurkat cell lysate

Lysates/proteins at 20 µg per lane.

Secondary

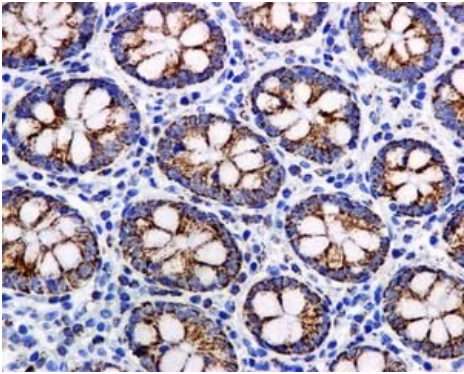
All lanes : Goat anti-Rabbit IgG H&L (IRDye® 800CW) preadsorbed ([ab216773](#)) at 1/10000 dilution

Predicted band size: 54 kDa

Observed band size: 56 kDa

Lanes 1-3: Merged signal (red and green). Green - ab124926 observed at 56 kDa. Red - loading control [ab8245](#) observed at 36 kDa.

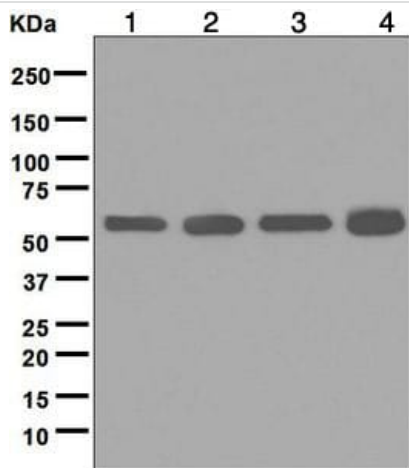
ab124926 Anti-Lipoamide Dehydrogenase antibody [EPR6634(B)] was shown to specifically react with Lipoamide Dehydrogenase in wild-type HeLa cells. Loss of signal was observed when knockout cell line [ab265535](#) (knockout cell lysate [ab257922](#)) was used. Wild-type and Lipoamide Dehydrogenase knockout samples were subjected to SDS-PAGE. ab124926 and Anti-GAPDH antibody [6C5] - Loading Control ([ab8245](#)) were incubated overnight at 4°C at 1 in 1000 dilution and 1 in 20000 dilution respectively. Blots were developed with Goat anti-Rabbit IgG H&L (IRDye® 800CW) preadsorbed ([ab216773](#)) and Goat anti-Mouse IgG H&L (IRDye® 680RD) preadsorbed ([ab216776](#)) secondary antibodies at 1 in 20000 dilution for 1 hour at room temperature before imaging.



Immunohistochemistry (Formalin/PFA-fixed paraffin-embedded sections) - Anti-Lipoamide Dehydrogenase antibody [EPR6634(B)] (ab124926)

ab124926 at 1/100 dilution staining Lipoamide Dehydrogenase in Paraffin-embedded Human colon tissue by Immunohistochemistry.

Perform heat mediated antigen retrieval with citrate buffer pH 6 before commencing with IHC staining protocol.



Western blot - Anti-Lipoamide Dehydrogenase antibody [EPR6634(B)] (ab124926)

All lanes : Anti-Lipoamide Dehydrogenase antibody [EPR6634(B)] (ab124926) at 1/1000 dilution

Lane 1 : Jurkat cell lysate

Lane 2 : MCF7 cell lysate

Lane 3 : HeLa cell lysate

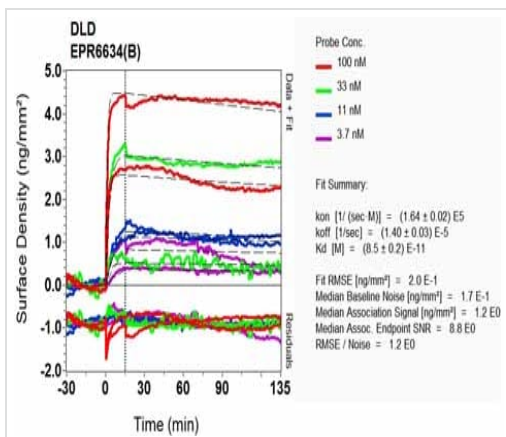
Lane 4 : 293T cell lysate

Lysates/proteins at 10 µg per lane.

Secondary

All lanes : HRP-conjugated goat anti-rabbit at 1/2000 dilution

Predicted band size: 54 kDa



OL-RD Scanning - Anti-Lipoamide Dehydrogenase antibody [EPR6634(B)] (ab124926)

Equilibrium disassociation constant (K_D)

Learn more about K_D

[Click here to learn more about \$K_D\$](#)

Why choose a recombinant antibody?



Research with confidence
Consistent and reproducible results



Long-term and scalable supply
Recombinant technology



Success from the first experiment
Confirmed specificity



Ethical standards compliant
Animal-free production

Anti-Lipoamide Dehydrogenase antibody [EPR6634(B)] (ab124926)

Please note: All products are "FOR RESEARCH USE ONLY. NOT FOR USE IN DIAGNOSTIC PROCEDURES"

Our Abpromise to you: Quality guaranteed and expert technical support

- Replacement or refund for products not performing as stated on the datasheet
- Valid for 12 months from date of delivery
- Response to your inquiry within 24 hours
- We provide support in Chinese, English, French, German, Japanese and Spanish
- Extensive multi-media technical resources to help you
- We investigate all quality concerns to ensure our products perform to the highest standards

If the product does not perform as described on this datasheet, we will offer a refund or replacement. For full details of the Abpromise, please visit <https://www.abcam.cn/abpromise> or contact our technical team.

Terms and conditions

- Guarantee only valid for products bought direct from Abcam or one of our authorized distributors