


Anti-Lipin 1 antibody ab70138

★★★★☆ [4 Abreviews](#) [6 References](#) [1 图像](#)

概述

产品名称	Anti-Lipin 1抗体
描述	兔多克隆抗体to Lipin 1
宿主	Rabbit
经测试应用	适用于: WB
种属反应性	与反应: Mouse 预测可用于: Rat, Rabbit, Cow, Dog, Human, Pig, Chimpanzee 
免疫原	Synthetic peptide corresponding to Human Lipin 1 aa 850 to the C-terminus (C terminal) conjugated to keyhole limpet haemocyanin. (Peptide available as ab86631)
阳性对照	This antibody gave a positive signal in the following Mouse Tissue Lysates: Liver; Pancreas, Kidney.
常规说明	<p>The Life Science industry has been in the grips of a reproducibility crisis for a number of years. Abcam is leading the way in addressing this with our range of recombinant monoclonal antibodies and knockout edited cell lines for gold-standard validation. Please check that this product meets your needs before purchasing.</p> <p>If you have any questions, special requirements or concerns, please send us an inquiry and/or contact our Support team ahead of purchase. Recommended alternatives for this product can be found below, along with publications, customer reviews and Q&As</p>

性能

形式	Liquid
存放说明	Shipped at 4°C. Store at +4°C short term (1-2 weeks). Upon delivery aliquot. Store at -20°C or -80°C. Avoid freeze / thaw cycle.
存储溶液	pH: 7.40 Preservative: 0.02% Sodium azide Constituent: PBS
	Batches of this product that have a concentration < 1mg/ml may have BSA added as a stabilising agent. If you would like information about the formulation of a specific lot, please contact our scientific support team who will be happy to help.

纯度	Immunogen affinity purified
克隆	多克隆
同种型	IgG

应用

The Abpromise guarantee **Abpromise™**承诺保证使用ab70138于以下的经测试应用

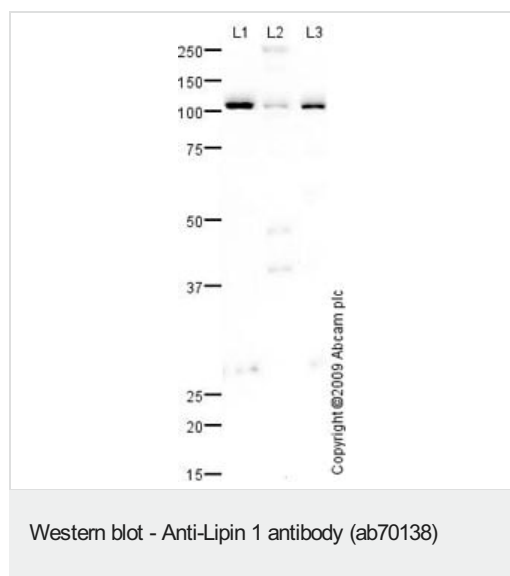
“应用说明”部分 下显示的仅为推荐的起始稀释度;实际最佳的稀释度/浓度应由使用者检定。

应用	Ab评论	说明
WB	★★★★★ (3)	Use a concentration of 1 µg/ml. Detects a band of approximately 110 kDa (predicted molecular weight: 99 kDa).

靶标

功能	Plays important roles in controlling the metabolism of fatty acids at different levels. Acts as a magnesium-dependent phosphatidate phosphatase enzyme which catalyzes the conversion of phosphatidic acid to diacylglycerol during triglyceride, phosphatidylcholine and phosphatidylethanolamine biosynthesis in the reticulum endoplasmic membrane. Acts also as a nuclear transcriptional coactivator for PPARGC1A/PPARA to modulate lipid metabolism gene expression (By similarity). Is involved in adipocyte differentiation. May also be involved in mitochondrial fission by converting phosphatidic acid to diacylglycerol.
组织特异性	Abundant in adipose tissue and skeletal muscle. Lower levels in some portions of the digestive tract.
疾病相关	Defects in LPIN1 are a cause of autosomal recessive acute recurrent myoglobinuria (ARARM) [MIM:268200]; also known as acute recurrent rhabdomyolysis. Recurrent myoglobinuria is characterized by recurrent attacks of rhabdomyolysis (necrosis or disintegration of skeletal muscle) associated with muscle pain and weakness and followed by excretion of myoglobin in the urine. Renal failure may occasionally occur. Onset is usually in early childhood under the age of 5 years.
序列相似性	Belongs to the lipin family.
结构域	Contains one Leu-Xaa-Xaa-Ile-Leu (LXXIL), a transcriptional binding motif, which mediates interaction with PPARA. Contains 1 Asp-Xaa-Asp-Xaa-Thr (DXDXT) motif, a catalytic motif essential for phosphatidate phosphatase activity.
翻译后修饰	Phosphorylated at multiple sites in response to insulin. Phosphorylation is controlled by the mTOR signaling pathway (By similarity). Dephosphorylated in response to epinephrine and oleic acid. Sumoylated.
细胞定位	Nucleus. Cytoplasm > cytosol. Endoplasmic reticulum membrane.

图片



All lanes : Anti-Lipin 1 antibody (ab70138) at 1 µg/ml

Lane 1 : Liver (Mouse) Tissue Lysate

Lane 2 : Pancreas (Mouse) Tissue Lysate

Lane 3 : Kidney (Mouse) Tissue Lysate

Lysates/proteins at 10 µg per lane.

Secondary

All lanes : Goat polyclonal to Rabbit IgG - H&L - Pre-Adsorbed (HRP) at 1/3000 dilution

Developed using the ECL technique.

Performed under reducing conditions.

Predicted band size: 99 kDa

Observed band size: 110 kDa

Please note: All products are "FOR RESEARCH USE ONLY. NOT FOR USE IN DIAGNOSTIC PROCEDURES"

Our Abpromise to you: Quality guaranteed and expert technical support

- Replacement or refund for products not performing as stated on the datasheet
- Valid for 12 months from date of delivery
- Response to your inquiry within 24 hours
- We provide support in Chinese, English, French, German, Japanese and Spanish
- Extensive multi-media technical resources to help you
- We investigate all quality concerns to ensure our products perform to the highest standards

If the product does not perform as described on this datasheet, we will offer a refund or replacement. For full details of the Abpromise, please visit <https://www.abcam.cn/abpromise> or contact our technical team.

Terms and conditions

- Guarantee only valid for products bought direct from Abcam or one of our authorized distributors