

# Anti-Lin28A antibody [EPR4639] ab109751

重组 RabMAb

## 1 References 3 图像

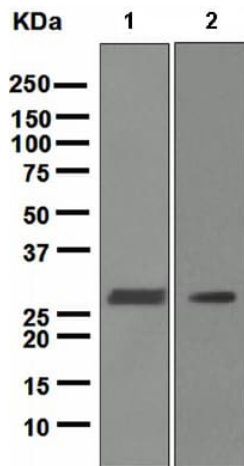
### 概述

产品名称	Anti-Lin28A抗体[EPR4639]
描述	兔单克隆抗体[EPR4639] to Lin28A
宿主	Rabbit
经测试应用	<b>适用于:</b> WB, ICC/IF <b>不适用于:</b> IHC-P
种属反应性	<b>与反应:</b> Human
免疫原	Synthetic peptide. This information is proprietary to Abcam and/or its suppliers.
阳性对照	WB: JAR and NCCIT cell lysates; ICC/IF: NCCIT cells.
常规说明	<p>This product is a recombinant monoclonal antibody, which offers several advantages including:</p> <ul style="list-style-type: none"><li>- High batch-to-batch consistency and reproducibility</li><li>- Improved sensitivity and specificity</li><li>- Long-term security of supply</li><li>- Animal-free production</li></ul> <p>For more information <a href="#">see here</a>.</p> <p>Our RabMAb<sup>®</sup> technology is a patented hybridoma-based technology for making rabbit monoclonal antibodies. For details on our patents, please refer to <a href="#">RabMAb<sup>®</sup> patents</a>.</p> <p>Mouse, Rat: We have preliminary internal testing data to indicate this antibody may not react with these species. Please contact us for more information.</p>

### 性能

形式	Liquid
存放说明	Shipped at 4°C. Store at -20°C. Stable for 12 months at -20°C.
存储溶液	pH: 7.20 Preservative: 0.05% Sodium azide Constituents: 0.1% BSA, 40% Glycerol (glycerin, glycerine), 9.85% Tris glycine, 50% Tissue culture supernatant
纯度	Protein A purified
克隆	单克隆





Western blot - Anti-Lin28A antibody [EPR4639] (ab109751)

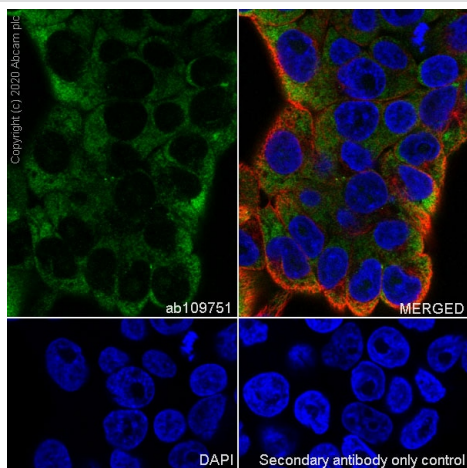
**All lanes** : Anti-Lin28A antibody [EPR4639] (ab109751) at 1/1000 dilution

**Lane 1** : JAR cell lysate

**Lane 2** : NCCIT cell lysate

Lysates/proteins at 10 µg per lane.

**Predicted band size:** 23 kDa





Immunocytochemistry/ Immunofluorescence - Anti-Lin28A antibody [EPR4639] (ab109751)


Immunofluorescent analysis of 4% Paraformaldehyde-fixed, 0.1% TritonX-100 permeabilized NCCIT cells labelling Lin28A with ab109751 at 1/500 dilution, followed by **ab150077** Goat Anti-Rabbit IgG H&L (Alexa Fluor® 488) antibody at 1/1000 dilution (2 µg/mL) (Green). Confocal image showing cytoplasmic staining in NCCIT cell line. **ab195889** Anti-alpha Tubulin mouse monoclonal antibody - Microtubule Marker (Alexa Fluor® 594) was used to counterstain tubulin at 1/200 dilution (2.5 µg/mL) (Red). The nuclear counterstain was DAPI (Blue).


Secondary antibody only control: PBS instead of the primary antibody.

### Why choose a recombinant antibody?

- 

**Research with confidence**  
Consistent and reproducible results
- 

**Long-term and scalable supply**  
Recombinant technology
- 

**Success from the first experiment**  
Confirmed specificity
- 

**Ethical standards compliant**  
Animal-free production

Anti-Lin28A antibody [EPR4639] (ab109751)

**Please note:** All products are "FOR RESEARCH USE ONLY. NOT FOR USE IN DIAGNOSTIC PROCEDURES"

### **Our Abpromise to you: Quality guaranteed and expert technical support**

---

- Replacement or refund for products not performing as stated on the datasheet
- Valid for 12 months from date of delivery
- Response to your inquiry within 24 hours
  
- We provide support in Chinese, English, French, German, Japanese and Spanish
- Extensive multi-media technical resources to help you
- We investigate all quality concerns to ensure our products perform to the highest standards

If the product does not perform as described on this datasheet, we will offer a refund or replacement. For full details of the Abpromise, please visit <https://www.abcam.cn/abpromise> or contact our technical team.

### **Terms and conditions**

---

- Guarantee only valid for products bought direct from Abcam or one of our authorized distributors