


Anti-LIMK2 antibody [EP969Y] - C-terminal ab45165

敲除验证 重组 RabMAb

★★★★☆ 2 Abreviews 8 References 5 图像

概述

产品名称	Anti-LIMK2抗体[EP969Y] - C-terminal
描述	兔单克隆抗体[EP969Y] to LIMK2 - C-terminal
宿主	Rabbit
经测试应用	适用于: IHC-P, ICC/IF, WB
种属反应性	与反应: Human 预测可用于: Mouse, Rat 
免疫原	Synthetic peptide. This information is proprietary to Abcam and/or its suppliers.
阳性对照	WB: Wild-type HAP1 cell lysate. Jurkat cell lysate. Ramos membrane lysate. IHC-P: Human endometrium carcinoma tissue. ICC/IF: Ramos cells.
常规说明	Our RabMAb [®] technology is a patented hybridoma-based technology for making rabbit monoclonal antibodies. For details on our patents, please refer to RabMAb[®] patents .

性能

形式	Liquid
存放说明	Shipped at 4°C. Upon delivery aliquot and store at -20°C. Avoid freeze / thaw cycles.
存储溶液	pH: 7.20 Preservative: 0.01% Sodium azide Constituents: PBS, 40% Glycerol (glycerin, glycerine), 0.5% BSA
纯度	Protein A purified
克隆	单克隆
克隆编号	EP969Y
同种型	IgG

应用

The Abpromise guarantee **Abpromise[™]承诺保证使用ab45165于以下的经测试应用**

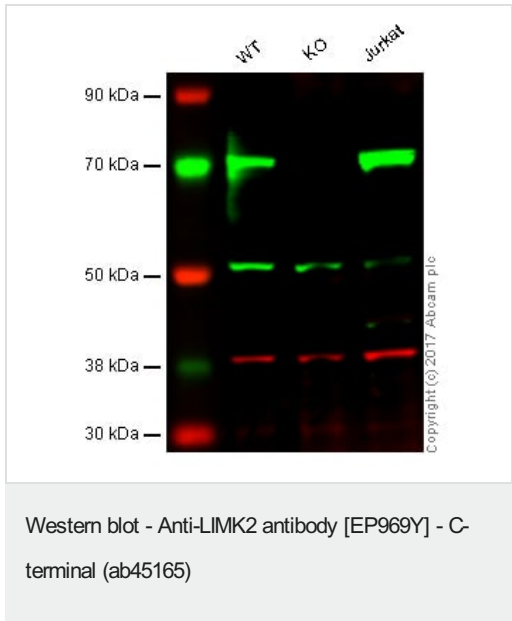
“应用说明”部分 下显示的仅为推荐的起始稀释度;实际最佳的稀释度/浓度应由使用者检定。

应用	Ab评论	说明
IHC-P	★ ★ ★ ★ ★ (1)	1/250. Perform heat mediated antigen retrieval before commencing with IHC staining protocol.
ICC/IF		1/50 - 1/100.
WB	★ ★ ★ ★ ★ (1)	1/2000. Predicted molecular weight: 72 kDa.

靶标

功能	Displays serine/threonine-specific phosphorylation of myelin basic protein and histone (MBP) in vitro.
组织特异性	Highest expression in the placenta; moderate level in liver, lung, kidney, and pancreas. LIMK2a is found to be more abundant than LIMK2b in liver, colon, stomach, and spleen, while in brain, kidney, and placenta LIMK2b is the dominant form. In adult lung, both LIMK2a and LIMK2b is nearly equally observed.
序列相似性	Belongs to the protein kinase superfamily. TKL Ser/Thr protein kinase family. Contains 2 LIM zinc-binding domains. Contains 1 PDZ (DHR) domain. Contains 1 protein kinase domain.
翻译后修饰	Phosphorylated on serine and/or threonine residues by ROCK1.
细胞定位	Cytoplasm. Nucleus. Isoform LIMK2a is distributed in the cytoplasm and the nucleus and Cytoplasm. Nucleus. Isoform LIMK2b occurs mainly in the cytoplasm and is scarcely translocated to the nucleus.

图片

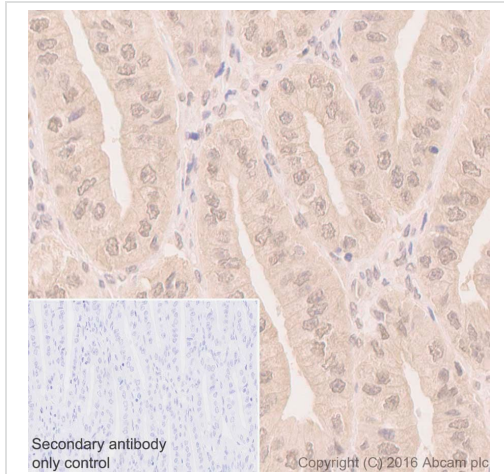


Lane 1: Wild-type HAP1 whole cell lysate (40 µg)
Lane 2: LIMK2 (LIMK2) knockout HAP1 whole cell lysate (40 µg)
Lane 3: Jurkat whole cell lysate (40 µg)

Lanes 1 - 3: Merged signal (red and green). Green - ab45165 observed at 72 kDa. Red - loading control, [ab9484](#), observed at 37 kDa.

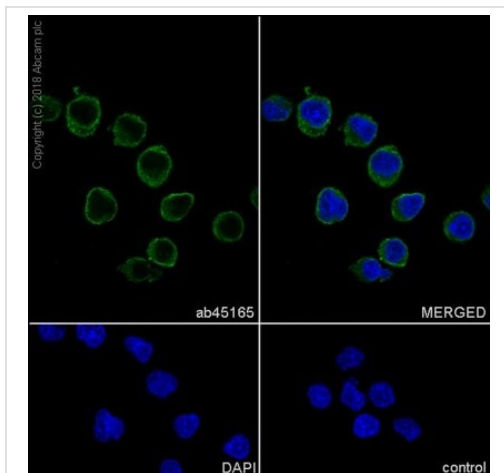
ab45165 was shown to specifically recognize LIMK2 (LIMK2) in wild-type HAP1 cells along with additional cross-reactive bands. No band was observed with knockout cells were examined. Wild-type and LIMK2 (LIMK2) knockout samples were subjected to SDS-PAGE. Ab45165 and [ab9484](#) (Mouse anti GAPDH loading control) were incubated overnight at 4°C at 1/2000 dilution and 1/20,000 dilution respectively. Blots were developed with Goat anti-Rabbit IgG H&L (IRDye® 800CW) preabsorbed ([ab216773](#)) and Goat anti-Mouse IgG H&L (IRDye® 680RD) preabsorbed ([ab216776](#)) secondary antibodies at 1/20,000 dilution for 1 hour at room

temperature before imaging.



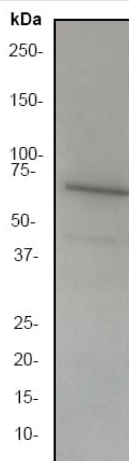
Immunohistochemistry (Formalin/PFA-fixed paraffin-embedded sections) - Anti-LIMK2 antibody [EP969Y] - C-terminal (ab45165)

Immunohistochemistry (Formalin/PFA-fixed paraffin-embedded sections) analysis of human endometrium cancer tissue labeling LIMK2 with ab45165 at 1/250 dilution. Heat mediated antigen retrieval was performed using Tris/EDTA buffer pH 9. [ab97051](#), a HRP-conjugated goat anti-rabbit IgG (H+L) was used as the secondary antibody (1/500). Negative control using PBS instead of primary antibody. Counterstained with hematoxylin.



Immunocytochemistry/ Immunofluorescence - Anti-LIMK2 antibody [EP969Y] - C-terminal (ab45165)

Immunocytochemistry/ Immunofluorescence analysis of Ramos cells labeling LIMK2 with ab45165 at 1/250. Goat anti rabbit IgG(Alexa Fluor® 488); [ab150077](#) at 1/1000 dilution was used as the secondary antibody. Cells were fixed with 4% paraformaldehyde and permeabilised with 0.1% tritonX-100. DAPI (blue) was used as a nuclear counterstain.



Anti-LIMK2 antibody [EP969Y] - C-terminal (ab45165) at 1/2000 dilution + Ramos (Human Burkitt's lymphoma cell line) membrane lysate

Predicted band size: 72 kDa

Observed band size: 70 kDa

Western blot - Anti-LIMK2 antibody [EP969Y] - C-terminal (ab45165)

Why choose a recombinant antibody?



Research with confidence
Consistent and reproducible results



Long-term and scalable supply
Recombinant technology



Success from the first experiment
Confirmed specificity



Ethical standards compliant
Animal-free production

Anti-LIMK2 antibody [EP969Y] - C-terminal (ab45165)

Please note: All products are "FOR RESEARCH USE ONLY. NOT FOR USE IN DIAGNOSTIC PROCEDURES"

Our Abpromise to you: Quality guaranteed and expert technical support

- Replacement or refund for products not performing as stated on the datasheet
- Valid for 12 months from date of delivery
- Response to your inquiry within 24 hours
- We provide support in Chinese, English, French, German, Japanese and Spanish
- Extensive multi-media technical resources to help you
- We investigate all quality concerns to ensure our products perform to the highest standards

If the product does not perform as described on this datasheet, we will offer a refund or replacement. For full details of the Abpromise, please visit <https://www.abcam.cn/abpromise> or contact our technical team.

Terms and conditions

- Guarantee only valid for products bought direct from Abcam or one of our authorized distributors