


### Anti-LIMD1 antibody ab114104

★★★★★ **1 Abreviews**    **1 图像**

#### 概述

产品名称	Anti-LIMD1抗体
描述	兔多克隆抗体to LIMD1
宿主	Rabbit
经测试应用	适用于: IP
种属反应性	与反应: Human 预测可用于: Mouse, Horse, Guinea pig, Cow, Dog, Pig, Chimpanzee, Rhesus monkey, Gorilla, Platypus 
免疫原	Synthetic peptide, corresponding to a region between amino acids 1-50 of Human LIMD1 (NP_055055.1).
阳性对照	Whole cell lysate from HeLa cells.
常规说明	<p>The Life Science industry has been in the grips of a reproducibility crisis for a number of years. Abcam is leading the way in addressing this with our range of recombinant monoclonal antibodies and knockout edited cell lines for gold-standard validation. Please check that this product meets your needs before purchasing.</p> <p>If you have any questions, special requirements or concerns, please send us an inquiry and/or contact our Support team ahead of purchase. Recommended alternatives for this product can be found below, along with publications, customer reviews and Q&amp;As</p>

#### 性能

形式	Liquid
存放说明	Shipped at 4°C. Upon delivery aliquot and store at -20°C. Avoid freeze / thaw cycles.
存储溶液	<p>pH: 7</p> <p>Preservative: 0.09% Sodium azide</p> <p>Constituent: 99% Tris citrate/phosphate</p>
纯度	pH 7-8 Immunogen affinity purified
纯化说明	ab114104 was affinity purified using an epitope specific to LIMD1 immobilized on solid support.
克隆	多克隆

同种型

IgG

应用

The Abpromise guarantee

Abpromise™承诺保证使用ab114104于以下的经测试应用

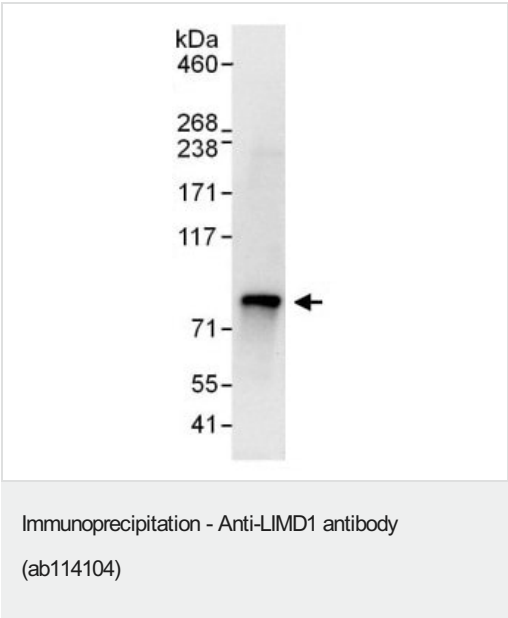
“应用说明”部分 下显示的仅为推荐的起始稀释度;实际最佳的稀释度/浓度应由使用者检定。

应用	Ab评论	说明
IP		Use at 2-10 µg/mg of lysate.

靶标

功能	Transcriptional regulator that inhibits E2F-mediated transcription, and suppresses the expression of the majority of genes with E2F1-responsive elements. May act as a tumor suppressor by inhibiting cell proliferation.
组织特异性	Ubiquitous.
序列相似性	Belongs to the zyxin/ajuba family. Contains 3 LIM zinc-binding domains.
细胞定位	Cytoplasm. Nucleus. Shuttles between cytoplasm and nucleus but is localized predominantly to the cytoplasm. Found in the nucleus but not nucleoli.

图片



Detection of Human LIMD1 by Western blot of Immunoprecipitate. LIMD1 was immunoprecipitated from HeLa whole cell lysate, using ab114104 at 6 µg/mg lysate (1 mg for IP, 20% of IP loaded). An affinity purified rabbit anti-LIMD1 antibody was used for the subsequent WB at 0.4 µg/ml. Detection: Chemiluminescence with an exposure time of 10 seconds.

Please note: All products are "FOR RESEARCH USE ONLY. NOT FOR USE IN DIAGNOSTIC PROCEDURES"

Our Abpromise to you: Quality guaranteed and expert technical support

- Replacement or refund for products not performing as stated on the datasheet
- Valid for 12 months from date of delivery
- Response to your inquiry within 24 hours
- We provide support in Chinese, English, French, German, Japanese and Spanish
- Extensive multi-media technical resources to help you
- We investigate all quality concerns to ensure our products perform to the highest standards

If the product does not perform as described on this datasheet, we will offer a refund or replacement. For full details of the Abpromise, please visit <https://www.abcam.cn/abpromise> or contact our technical team.

#### **Terms and conditions**

---

- Guarantee only valid for products bought direct from Abcam or one of our authorized distributors