

# Anti-LIM Kinase 1 antibody [OTI3G3] ab119084

**3 References**   **4 图像**

### 概述

产品名称	Anti-LIM Kinase 1 抗体[OTI3G3]
描述	小鼠单克隆抗体[OTI3G3] to LIM Kinase 1
宿主	Mouse
经测试应用	适用于: WB, ICC/IF, IHC-P
种属反应性	与反应: Human, African green monkey
免疫原	Recombinant full length protein corresponding to Human LIM Kinase 1. Produced in HEK-293T cells. NP_002305. Database link: <a href="#">P53667</a>
阳性对照	WB: HEK-293T cells transfected with LIM Kinase 1. ICC/IF: COS-7 cells transiently transfected with LIM Kinase 1. IHC-P: Human endometrium adenocarcinoma and lymphoma tissue.
常规说明	<p>The clone number has been updated from 3G3 to OTI3G3, both clone numbers name the same clone.</p> <p>The Life Science industry has been in the grips of a reproducibility crisis for a number of years. Abcam is leading the way in addressing this with our range of recombinant monoclonal antibodies and knockout edited cell lines for gold-standard validation. Please check that this product meets your needs before purchasing.</p> <p>If you have any questions, special requirements or concerns, please send us an inquiry and/or contact our Support team ahead of purchase. Recommended alternatives for this product can be found below, along with publications, customer reviews and Q&amp;As</p>

### 性能

形式	Liquid
存放说明	Shipped at 4°C. Store at +4°C short term (1-2 weeks). Upon delivery aliquot. Store at -20°C. Avoid freeze / thaw cycle.
存储溶液	pH: 7.30 Preservative: 0.02% Sodium azide Constituents: PBS, 1% BSA, 50% Glycerol
纯度	Affinity purified
纯化说明	Purified from cell culture supernatant by affinity chromatography
克隆	单克隆

克隆编号	OTI3G3
同种型	IgG2b

应用

The Abpromise guarantee

Abpromise™承诺保证使用ab119084于以下的经测试应用

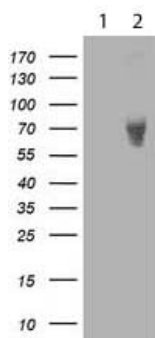
“应用说明”部分 下显示的仅为推荐的起始稀释度;实际最佳的稀释度/浓度应由使用者检定。

应用	Ab评论	说明
WB		1/2000. Predicted molecular weight: 73 kDa.
ICC/IF		1/100.
IHC-P		1/150. Perform heat mediated antigen retrieval before commencing with IHC staining protocol.

靶标

功能	Protein kinase which regulates actin filament dynamics. Phosphorylates and inactivates the actin binding/depolymerizing factor cofilin, thereby stabilizing the actin cytoskeleton. Stimulates axonal outgrowth and may be involved in brain development. Isoform 3 has a dominant negative effect on actin cytoskeletal changes.
组织特异性	Highest expression in both adult and fetal nervous system. Detected ubiquitously throughout the different regions of adult brain, with highest levels in the cerebral cortex. Expressed to a lesser extent in heart and skeletal muscle.
疾病相关	Note=LIMK1 is located in the Williams-Beuren syndrome (WBS) critical region. WBS results from a hemizygous deletion of several genes on chromosome 7q11.23, thought to arise as a consequence of unequal crossing over between highly homologous low-copy repeat sequences flanking the deleted region.
序列相似性	Belongs to the protein kinase superfamily. TKL Ser/Thr protein kinase family. Contains 2 LIM zinc-binding domains. Contains 1 PDZ (DHR) domain. Contains 1 protein kinase domain.
翻译后修饰	Autophosphorylated. Phosphorylated on serine and/or threonine residues by ROCK1. May be dephosphorylated and inactivated by SSH1. Ubiquitinated. 'Lys-48'-linked polyubiquitination by RNF6 leads to proteasomal degradation through the 26S proteasome, modulating LIMK1 levels in the growth cone and its effect on axonal outgrowth. Also polyubiquitinated by RLIM.
细胞定位	Cytoplasm. Cell projection > growth cone.

图片



Western blot - Anti-LIM Kinase 1 antibody [OTI3G3] (ab119084)

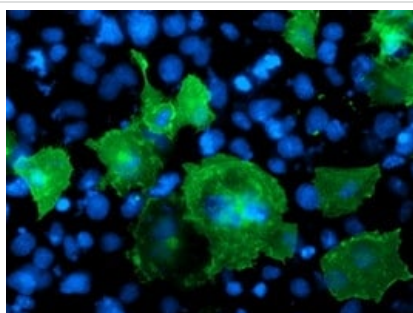
**All lanes :** Anti-LIM Kinase 1 antibody [OTI3G3] (ab119084) at 1/2000 dilution

**Lane 1 :** HEK-293T (Human epithelial cell line from embryonic kidney transformed with large T antigen) cell lysate transfected the pCMV6-ENTRY control

**Lane 2 :** HEK-293T cell lysate transfected the pCMV6-ENTRY LIM Kinase 1

Lysates/proteins at 5 µg per lane.

**Predicted band size:** 73 kDa



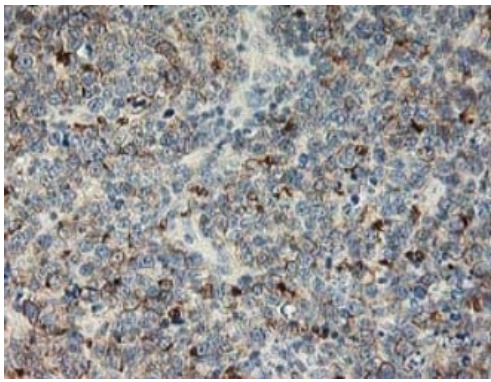
Immunocytochemistry/ Immunofluorescence - Anti-LIM Kinase 1 antibody [OTI3G3] (ab119084)

Immunofluorescent staining of COS-7 cells transiently transfected by pCMV6-ENTRY LIM Kinase 1 using ab119084 at a dilution of 1/100.



Immunohistochemistry (Formalin/PFA-fixed paraffin-embedded sections) - Anti-LIM Kinase 1 antibody [OTI3G3] (ab119084)

Immunohistochemistry (Formalin/PFA-fixed paraffin-embedded sections) of human endometrium adenocarcinoma tissue using ab119084 at a 1/150 dilution. Heat-induced epitope retrieval by 10 mM citric buffer, pH 6.0, 100°C for 10 minutes.



Immunohistochemistry (Formalin/PFA-fixed paraffin-embedded sections) - Anti-LIM Kinase 1 antibody [OTI3G3] (ab119084)

Immunohistochemistry (Formalin/PFA-fixed paraffin-embedded sections) of human lymphoma tissue using ab119084 at a 1/150 dilution. Heat-induced epitope retrieval by 10 mM citric buffer, pH 6.0, 100°C for 10 minutes.

**Please note:** All products are "FOR RESEARCH USE ONLY. NOT FOR USE IN DIAGNOSTIC PROCEDURES"

#### Our Abpromise to you: Quality guaranteed and expert technical support

---

- Replacement or refund for products not performing as stated on the datasheet
- Valid for 12 months from date of delivery
- Response to your inquiry within 24 hours
- We provide support in Chinese, English, French, German, Japanese and Spanish
- Extensive multi-media technical resources to help you
- We investigate all quality concerns to ensure our products perform to the highest standards

If the product does not perform as described on this datasheet, we will offer a refund or replacement. For full details of the Abpromise, please visit <https://www.abcam.cn/abpromise> or contact our technical team.

#### Terms and conditions

---

- Guarantee only valid for products bought direct from Abcam or one of our authorized distributors