

Anti-Lhx4 antibody [LHX4E11E10] ab50790

1 图像

概述

产品名称	Anti-Lhx4抗体[LHX4E11E10]
描述	小鼠单克隆抗体[LHX4E11E10] to Lhx4
宿主	Mouse
经测试应用	适用于: WB
种属反应性	与反应: Recombinant fragment
免疫原	Recombinant fragment corresponding to Human Lhx4 aa 50-200.
常规说明	<p>The Life Science industry has been in the grips of a reproducibility crisis for a number of years. Abcam is leading the way in addressing this with our range of recombinant monoclonal antibodies and knockout edited cell lines for gold-standard validation. Please check that this product meets your needs before purchasing.</p> <p>If you have any questions, special requirements or concerns, please send us an inquiry and/or contact our Support team ahead of purchase. Recommended alternatives for this product can be found below, along with publications, customer reviews and Q&As</p>

性能

形式	Liquid
存放说明	Shipped at 4°C. Store at +4°C short term (1-2 weeks). Upon delivery aliquot. Store at -20°C long term.
存储溶液	pH: 7.40 Preservative: 0.05% Sodium azide Constituents: 0.0225% Potassium chloride, 1% BSA, 0.03% Potassium phosphate, 0.812% Sodium chloride, 0.1312% Sodium phosphate, PBS
纯度	Protein G purified
纯化说明	Ab50790 was purified using protein G column chromatography from culture supernatant of hybridoma cultured in a medium containing bovine IgG depleted (approximately 95%) fetal bovine serum. This antibody was filtered through a 0.22 µm membrane.
克隆	单克隆
克隆编号	LHX4E11E10
同种型	IgG1

应用

The Abpromise guarantee **Abpromise™**承诺保证使用ab50790于以下的经测试应用

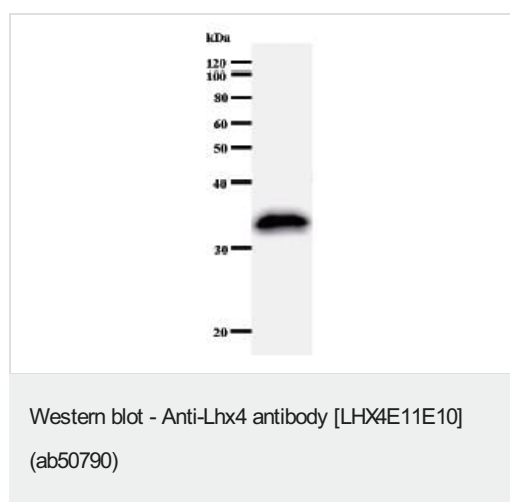
“应用说明”部分 下显示的仅为推荐的起始稀释度;实际最佳的稀释度/浓度应由使用者检定。

应用	Ab评论	说明
WB		Use at an assay dependent dilution. Detects a band of approximately 34 kDa (predicted molecular weight: 43 kDa).

靶标

功能	May play a critical role in the development of respiratory control mechanisms and in the normal growth and maturation of the lung.
疾病相关	Defects in LHX4 are the cause of pituitary hormone deficiency combined type 4 (CPHD4) [MIM:262700]; also known as short stature pituitary and cerebellar defects and small sella turcica. The disorder is characterized by short stature, pituitary and cerebellar defects, and small transverse depression crossing the midline on the superior surface of the body of the sphenoid bone which houses the pituitary gland. Note=A chromosomal aberration involving LHX4 may be a cause of acute lymphoblastic leukemia. Translocation t(1;14)(q25;q32) with IGHG1.
序列相似性	Contains 1 homeobox DNA-binding domain. Contains 2 LIM zinc-binding domains.
细胞定位	Nucleus.

图片



Anti-Lhx4 antibody [LHX4E11E10] (ab50790) + Immunised recombinant protein.

Predicted band size: 43 kDa

Observed band size: 34 kDa

Please note: All products are "FOR RESEARCH USE ONLY. NOT FOR USE IN DIAGNOSTIC PROCEDURES"

Our Abpromise to you: Quality guaranteed and expert technical support

- Replacement or refund for products not performing as stated on the datasheet

- Valid for 12 months from date of delivery
- Response to your inquiry within 24 hours

- We provide support in Chinese, English, French, German, Japanese and Spanish
- Extensive multi-media technical resources to help you
- We investigate all quality concerns to ensure our products perform to the highest standards

If the product does not perform as described on this datasheet, we will offer a refund or replacement. For full details of the Abpromise, please visit <https://www.abcam.cn/abpromise> or contact our technical team.

Terms and conditions

- Guarantee only valid for products bought direct from Abcam or one of our authorized distributors