


### Anti-Lgi1/EPT antibody ab30868

★★★★★ [5 Abreviews](#) [28 References](#) [2 图像](#)

#### 概述

产品名称	Anti-Lgi1/EPT抗体
描述	兔多克隆抗体to Lgi1/EPT
宿主	Rabbit
经测试应用	适用于: IHC-FoFr, ICC/IF, WB
种属反应性	与反应: Mouse, Rat, Hamster, Human 预测可用于: Chicken, Cow 
免疫原	Synthetic peptide. This information is proprietary to Abcam and/or its suppliers.
常规说明	<p>The Life Science industry has been in the grips of a reproducibility crisis for a number of years. Abcam is leading the way in addressing this with our range of recombinant monoclonal antibodies and knockout edited cell lines for gold-standard validation. Please check that this product meets your needs before purchasing.</p> <p>If you have any questions, special requirements or concerns, please send us an inquiry and/or contact our Support team ahead of purchase. Recommended alternatives for this product can be found below, along with publications, customer reviews and Q&amp;As</p>

#### 性能

形式	Liquid
存放说明	Shipped at 4°C. Store at +4°C short term (1-2 weeks). Upon delivery aliquot. Store at -20°C or -80°C. Avoid freeze / thaw cycle.
存储溶液	<p>pH: 7.40</p> <p>Preservative: 0.02% Sodium azide</p> <p>Constituent: PBS</p> <p>Batches of this product that have a concentration &lt; 1mg/ml may have BSA added as a stabilising agent. If you would like information about the formulation of a specific lot, please contact our scientific support team who will be happy to help.</p>
纯度	Immunogen affinity purified
克隆	多克隆
同种型	IgG

应用

The Abpromise guarantee      **Abpromise™**承诺保证使用ab30868于以下的经测试应用

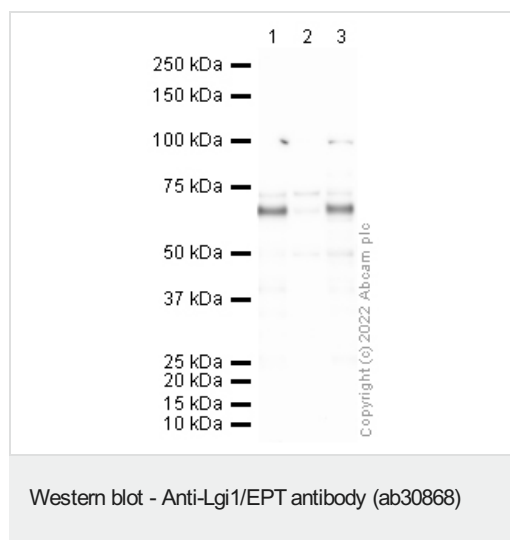
“应用说明”部分 下显示的仅为推荐的起始稀释度;实际最佳的稀释度/浓度应由使用者检定。

应用	Ab评论	说明
IHC-FoFr	★★★★★ (1)	Use at an assay dependent concentration.
ICC/IF	★★★★★ (1)	Use at an assay dependent concentration.
WB	★★★★★ (3)	Use a concentration of 1 µg/ml. Detects a band of approximately 68 kDa (predicted molecular weight: 64 kDa).

靶标

功能	Regulates voltage-gated potassium channels assembled from KCNA1, KCNA4 and KCNAB1. It slows down channel inactivation by precluding channel closure mediated by the KCNAB1 subunit. Ligand for ADAM22 that positively regulates synaptic transmission mediated by AMPA-type glutamate receptors (By similarity). Plays a role in suppressing the production of MMP1/3 through the phosphatidylinositol 3-kinase/ERK pathway. May play a role in the control of neuroblastoma cell survival.
组织特异性	Predominantly expressed in neural tissues, especially in brain. Expression is reduced in low-grade brain tumors and significantly reduced or absent in malignant gliomas. Isoform 1 is absent in the cerebellum and is detectable in the occipital cortex and hippocampus; higher amounts are observed in the parietal and frontal cortices, putamen, and, particularly, in the temporal neocortex, where it is 3.5 times more abundant than in the hippocampus (at protein level). Isoform 3 shows the highest expression in the occipital cortex and the lowest in the hippocampus (at protein level).
疾病相关	Defects in LGI1 are the cause of lateral temporal lobe epilepsy autosomal dominant (ADLTE) [MIM:600512]; also known as autosomal dominant partial epilepsy with auditory features (ADPEAF). ADLTE is a form of epilepsy characterized by partial seizures, usually preceded by auditory signs.
序列相似性	Contains 7 EAR repeats. Contains 3 LRR (leucine-rich) repeats. Contains 1 LRRCT domain. Contains 1 LRRNT domain.
翻译后修饰	Glycosylated.
细胞定位	Secreted. Cell junction > synapse. Isoform 1 but not isoform 2 is secreted. Isoform 1 is enriched in the Golgi apparatus while isoform 2 accumulates in the endoplasmic reticulum.

图片



**All lanes :** Anti-Lgi1/EPT antibody (ab30868) at 1 µg/ml

**Lane 1 :** Mouse brain tissue lysate

**Lane 2 :** Mouse brain P0 tissue lysate

**Lane 3 :** Rat brain tissue lysate

Lysates/proteins at 20 µg per lane.

### Secondary

**All lanes :** Goat polyclonal to Rabbit IgG - H&L - Pre-Adsorbed (HRP) at 1/50000 dilution

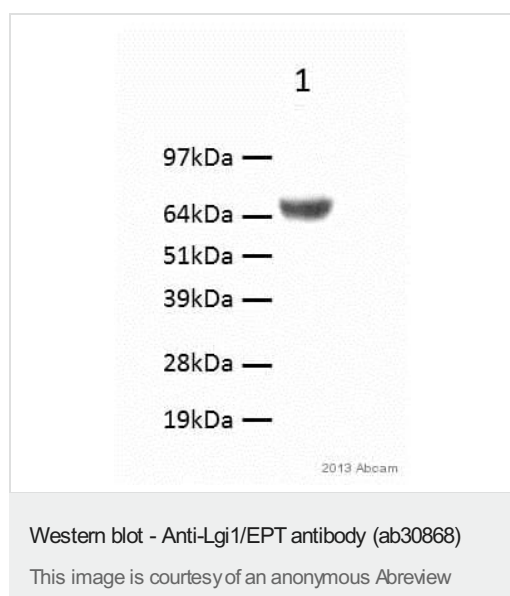
**Predicted band size:** 64 kDa

**Observed band size:** 68 kDa

**Exposure time:** 4 minutes

**Gel type:** MOPS

**Blocking buffer:** 2% BSA block



Anti-Lgi1/EPT antibody (ab30868) at 1/1000 dilution + rat brain tissue lysate at 30 µg

### Secondary

HRP-conjugate Goat anti-rabbit IgG polyclonal at 1/5000 dilution

Developed using the ECL technique.

Performed under reducing conditions.

**Predicted band size:** 64 kDa

**Observed band size:** 64 kDa

**Exposure time:** 5 minutes

**Please note:** All products are "FOR RESEARCH USE ONLY. NOT FOR USE IN DIAGNOSTIC PROCEDURES"

### **Our Abpromise to you: Quality guaranteed and expert technical support**

---

- Replacement or refund for products not performing as stated on the datasheet
- Valid for 12 months from date of delivery
- Response to your inquiry within 24 hours
  
- We provide support in Chinese, English, French, German, Japanese and Spanish
- Extensive multi-media technical resources to help you
- We investigate all quality concerns to ensure our products perform to the highest standards

If the product does not perform as described on this datasheet, we will offer a refund or replacement. For full details of the Abpromise, please visit <https://www.abcam.cn/abpromise> or contact our technical team.

### **Terms and conditions**

---

- Guarantee only valid for products bought direct from Abcam or one of our authorized distributors