


Anti-Leukotriene A4 hydrolase/LTA4H antibody [EPR5712]  
ab109434

敲除验证 重组 RabMAb

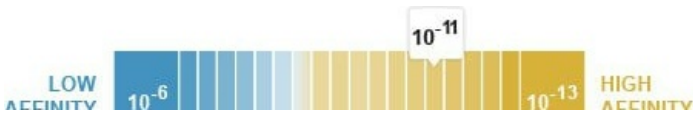
5 图像

概述

产品名称	Anti-Leukotriene A4 hydrolase/LTA4H抗体[EPR5712]
描述	兔单克隆抗体[EPR5712] to Leukotriene A4 hydrolase/LTA4H
宿主	Rabbit
经测试应用	适用于: WB, IHC-P 不适用于: ICC/IF
种属反应性	与反应: Human 预测可用于: Rat 
免疫原	Synthetic peptide. This information is proprietary to Abcam and/or its suppliers.
阳性对照	WB: HeLa, 293T, T47-D, and A549 cell lysates. IHC-P: Human breast carcinoma tissue.
常规说明	<p>This product is a recombinant monoclonal antibody, which offers several advantages including:</p> <ul style="list-style-type: none"><li>- High batch-to-batch consistency and reproducibility</li><li>- Improved sensitivity and specificity</li><li>- Long-term security of supply</li><li>- Animal-free production</li></ul> <p>For more information <a href="#">see here</a>.</p> <p>Our RabMAb<sup>®</sup> technology is a patented hybridoma-based technology for making rabbit monoclonal antibodies. For details on our patents, please refer to <a href="#">RabMAb<sup>®</sup> patents</a>.</p> <p>Mouse: We have preliminary internal testing data to indicate this antibody may not react with this species. Please contact us for more information.</p>

性能

形式	Liquid
存放说明	Shipped at 4°C. Store at -20°C. Stable for 12 months at -20°C.
解离常数 (K <sub>D</sub> )	K <sub>D</sub> = 5.80 x 10 <sup>-11</sup> M





**Learn more about  $K_D$**

存储溶液	pH: 7.20 Preservative: 0.05% Sodium azide Constituents: 0.1% BSA, 40% Glycerol (glycerin, glycerine), 9.85% Tris glycine, 50% Tissue culture supernatant
纯度	Protein A purified
克隆	单克隆
克隆编号	EPR5712
同种型	IgG

## 应用

## The Abpromise guarantee

**Abpromise™ 承诺保证使用ab109434于以下的经测试应用**

“应用说明”部分下显示的仅为推荐的起始稀释度;实际最佳的稀释度/浓度应由使用者检定。

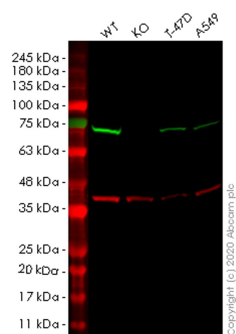
应用	Ab评论	说明
WB		1/10000 - 1/50000. Predicted molecular weight: 69 kDa.
IHC-P		1/250 - 1/500. Perform heat mediated antigen retrieval with citrate buffer pH 6 before commencing with IHC staining protocol. Antigen retrieval is recommended.

应用说明 Is unsuitable for ICC/IF.

靶标

功能	Hydrolyzes an epoxide moiety of leukotriene A4 (LTA-4) to form leukotriene B4 (LTB-4). The enzyme also has some peptidase activity.
通路	Lipid metabolism; leukotriene B4 biosynthesis.
序列相似性	Belongs to the peptidase M1 family.
细胞定位	Cytoplasm.

图片



Western blot - Anti-Leukotriene A4 hydrolase/LTA4H antibody [EPR5712] (ab109434)

**All lanes :** Anti-Leukotriene A4 hydrolase/LTA4H antibody [EPR5712] (ab109434) at 1/1000 dilution

**Lane 1 :** Wild-type HEK293T cell lysate

**Lane 2 :** LTA4H knockout HEK293T cell lysate

**Lane 3 :** T-47D cell lysate

**Lane 4 :** A549 cell lysate

Lysates/proteins at 20 µg per lane.

### Secondary

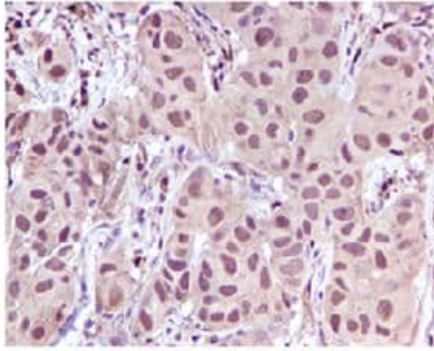
**All lanes :** Goat anti-Rabbit IgG H&L (IRDye® 800CW) preadsorbed ([ab216773](#)) at 1/10000 dilution

**Predicted band size:** 69 kDa

**Observed band size:** 69 kDa

**Lanes 1-4:** Merged signal (red and green). Green - ab109434 observed at 69 kDa. Red - loading control [ab8245](#) observed at 36 kDa.

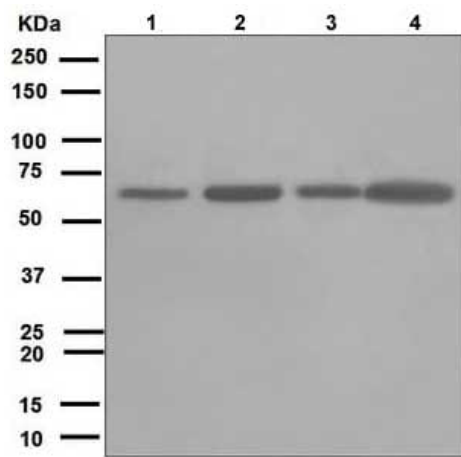
ab109434 Anti-Leukotriene A4 hydrolase/LTA4H antibody [EPR5712] was shown to specifically react with Leukotriene in wild-type HEK293T cells. Loss of signal was observed when knockout cell line [ab266467](#) (knockout cell lysate [ab258034](#)) was used. Wild-type and Leukotriene knockout samples were subjected to SDS-PAGE. ab109434 and Anti-GAPDH antibody [6C5] - Loading Control ([ab8245](#)) were incubated overnight at 4°C at 1 in 1000 dilution and 1 in 20000 dilution respectively. Blots were developed with Goat anti-Rabbit IgG H&L (IRDye® 800CW) preadsorbed ([ab216773](#)) and Goat anti-Mouse IgG H&L (IRDye® 680RD) preadsorbed ([ab216776](#)) secondary antibodies at 1 in 20000 dilution for 1 hour at room temperature before imaging.



Immunohistochemistry (Formalin/PFA-fixed paraffin-embedded sections) - Anti-Leukotriene A4 hydrolase/LTA4H antibody [EPR5712] (ab109434)

Immunohistochemical analysis of Leukotriene A4 hydrolase/LTA4H in paraffin-embedded Human breast carcinoma tissue using ab109434 at 1/250 dilution.

Perform heat mediated antigen retrieval with citrate buffer pH 6 before commencing with IHC staining protocol.



Western blot - Anti-Leukotriene A4 hydrolase/LTA4H antibody [EPR5712] (ab109434)

**All lanes :** Anti-Leukotriene A4 hydrolase/LTA4H antibody [EPR5712] (ab109434) at 1/10000 dilution

**Lane 1 :** HeLa cell lysate

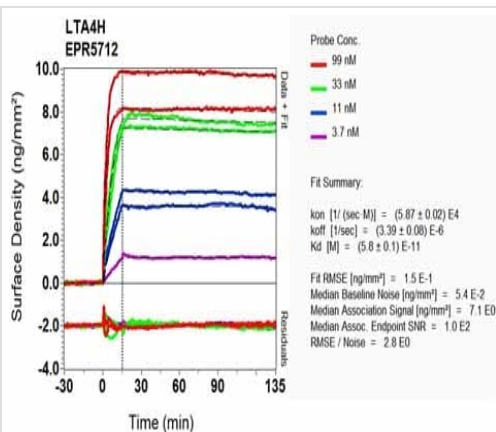
**Lane 2 :** 293T cell lysate

**Lane 3 :** T47D cell lysate

**Lane 4 :** A549 cell lysate

Lysates/proteins at 10 µg per lane.

**Predicted band size:** 69 kDa



OR-D Scanning - Anti-Leukotriene A4 hydrolase/LTA4H antibody [EPR5712] (ab109434)

Equilibrium dissociation constant ( $K_D$ )

Learn more about  $K_D$

[Click here to learn more about  \$K\_D\$](#)

### Why choose a recombinant antibody?



**Research with confidence**  
Consistent and reproducible results



**Long-term and scalable supply**  
Recombinant technology



**Success from the first experiment**  
Confirmed specificity



**Ethical standards compliant**  
Animal-free production

Anti-Leukotriene A4 hydrolase/LTA4H antibody  
[EPR5712] (ab109434)

**Please note:** All products are "FOR RESEARCH USE ONLY. NOT FOR USE IN DIAGNOSTIC PROCEDURES"

### Our Abpromise to you: Quality guaranteed and expert technical support

---

- Replacement or refund for products not performing as stated on the datasheet
- Valid for 12 months from date of delivery
- Response to your inquiry within 24 hours
- We provide support in Chinese, English, French, German, Japanese and Spanish
- Extensive multi-media technical resources to help you
- We investigate all quality concerns to ensure our products perform to the highest standards

If the product does not perform as described on this datasheet, we will offer a refund or replacement. For full details of the Abpromise, please visit <https://www.abcam.cn/abpromise> or contact our technical team.

### Terms and conditions

---

- Guarantee only valid for products bought direct from Abcam or one of our authorized distributors