




Anti-Leptin antibody ab3583

★★★★★ **3 Abreviews** **33 References** **5 图像**

概述

产品名称	Anti-Leptin抗体
描述	兔多克隆抗体to Leptin
宿主	Rabbit
经测试应用	适用于: ICC, IHC-Fr, Flow Cyt
种属反应性	与反应: Mouse, Sheep, Human 预测可用于: Goat, Horse, Chicken, Cow, Cat, Dog, Turkey, Chimpanzee, Rhesus monkey 
免疫原	Synthetic peptide corresponding to Mouse Leptin aa 25-44. Sequence: QKVQDDTKTLIKTIVTRIND  Run BLAST with  Run BLAST with
阳性对照	ICC: 3T3-L1, HeLa and mesenchymal stem cells. IHC-P: Sheep brain tissue. Flow Cyt: 3T3-L1 cells.
常规说明	<p>The Life Science industry has been in the grips of a reproducibility crisis for a number of years. Abcam is leading the way in addressing this with our range of recombinant monoclonal antibodies and knockout edited cell lines for gold-standard validation. Please check that this product meets your needs before purchasing.</p> <p>If you have any questions, special requirements or concerns, please send us an inquiry and/or contact our Support team ahead of purchase. Recommended alternatives for this product can be found below, along with publications, customer reviews and Q&As</p>

性能

形式	Liquid
存放说明	Shipped at 4°C. Store at +4°C short term (1-2 weeks). Upon delivery aliquot. Store at -20°C or -80°C. Avoid freeze / thaw cycle.
存储溶液	Preservative: 0.05% Sodium azide Constituents: 0.1% BSA, 99% PBS
纯度	Immunogen affinity purified
克隆	多克隆
同种型	IgG

应用

The Abpromise guarantee **Abpromise™**承诺保证使用ab3583于以下的经测试应用

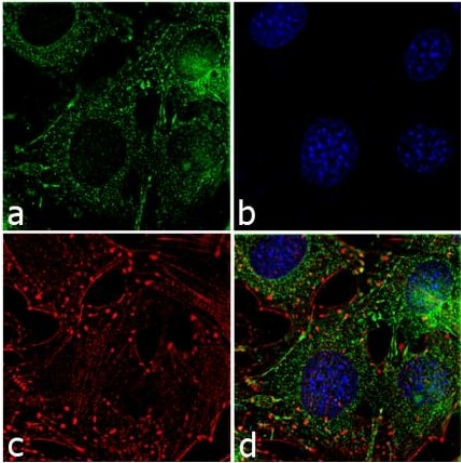
“应用说明”部分 下显示的仅为推荐的起始稀释度;实际最佳的稀释度/浓度应由使用者检定。

应用	Ab评论	说明
ICC		Use a concentration of 5 µg/ml.
IHC-Fr	★ ★ ★ ★ ★ (1)	1/50 - 1/200.
Flow Cyt		Use 3-5µl for 10 ⁶ cells.

靶标

功能	May function as part of a signaling pathway that acts to regulate the size of the body fat depot. An increase in the level of LEP may act directly or indirectly on the CNS to inhibit food intake and/or regulate energy expenditure as part of a homeostatic mechanism to maintain constancy of the adipose mass.
疾病相关	Defects in LEP may be a cause of obesity (OBESITY) [MIM:601665]. It is a condition characterized by an increase of body weight beyond the limitation of skeletal and physical requirements, as the result of excessive accumulation of body fat.
序列相似性	Belongs to the leptin family.
细胞定位	Secreted.

图片



Immunocytochemistry - Anti-Leptin antibody
(ab3583)

ab3583 staining Leptin in 3T3-L1 cells by ICC (Immunocytochemistry). Cells were fixed with 4% paraformaldehyde, permeabilized with 0.1% Triton X-100 and blocked with 1% BSA for 1 hour at room temperature. Samples were incubated with primary antibody (2ug/ml in 0.1% BSA) for 3 hours at room temperature. An Alexa Fluor® 488-conjugated Goat anti-rabbit IgG (H+L) polyclonal was used as the secondary antibody (1/2000) (Panel a). Nuclei were stained with DAPI (Panel b). F-actin stained with Rhodamine Phalloidin (panel c). Merged images shown in panel d.

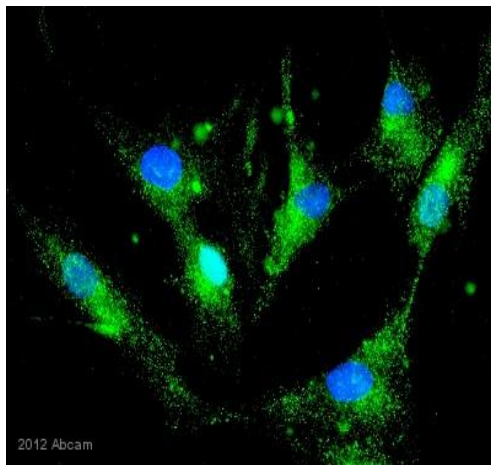


Immunohistochemistry (Frozen sections) - Anti-Leptin antibody (ab3583)

Immunohistochemical staining of Leptin in Sheep brain using ab3583.

Immunocytochemistry - Anti-Leptin antibody (ab3583)

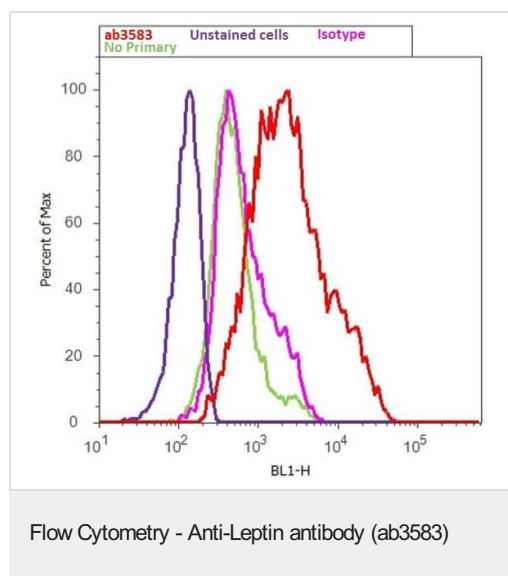
ICC image of ab3583 stained HeLa cells. The cells were 4% formaldehyde fixed (10 min) and then incubated in 1%BSA / 10% normal goat serum / 0.3M glycine in 0.1% PBS-Tween for 1h to permeabilise the cells and block non-specific protein-protein interactions. The cells were then incubated with the antibody (ab3583, 5µg/ml) overnight at +4°C. The secondary antibody (green) was Alexa Fluor® 488 goat anti-rabbit IgG (H+L) used at a 1/1000 dilution for 1h. Alexa Fluor® 594 WGA was used to label plasma membranes (red) at a 1/200 dilution for 1h. DAPI was used to stain the cell nuclei (blue) at a concentration of 1.43µM.



Immunocytochemistry - Anti-Leptin antibody (ab3583)

This image is courtesy of an Abreview submitted by Steven Johnstone

ab3583 staining Leptin in Human mesenchymal stem cells by ICC (Immunocytochemistry). Cells were fixed with paraformaldehyde and blocked with 10% serum for 30 minutes at 22°C. Samples were incubated with primary antibody (1/100 in 10% horse serum) for 1 hour at 22°C. A FITC-conjugated Mouse anti-rabbit IgG1 monoclonal was used as the secondary antibody (1/100).



ab3583 staining Leptin in 3T3-L1 cells by Flow Cytometry. The sample was incubated with the primary antibody (3ug/ml in 2.5% BSA) for 2 hours at room temperature. An Alexa Fluor 488®-conjugated Goat anti-rabbit (1/400) was used as the secondary antibody. Red histogram represents ab3583, pink histogram represents isotype control, purple histogram represents unstained control, green histogram represents no primary antibody control

Please note: All products are "FOR RESEARCH USE ONLY. NOT FOR USE IN DIAGNOSTIC PROCEDURES"

Our Abpromise to you: Quality guaranteed and expert technical support

- Replacement or refund for products not performing as stated on the datasheet
- Valid for 12 months from date of delivery
- Response to your inquiry within 24 hours
- We provide support in Chinese, English, French, German, Japanese and Spanish
- Extensive multi-media technical resources to help you
- We investigate all quality concerns to ensure our products perform to the highest standards

If the product does not perform as described on this datasheet, we will offer a refund or replacement. For full details of the Abpromise, please visit <https://www.abcam.cn/abpromise> or contact our technical team.

Terms and conditions

- Guarantee only valid for products bought direct from Abcam or one of our authorized distributors