


Anti-Legumain antibody [EPR14718] ab183028

重组 RabMAb

★ ★ ★ ★ ★ **1 Abreviews** **4 References** **2 图像**

概述

产品名称	Anti-Legumain抗体[EPR14718]
描述	兔单克隆抗体[EPR14718] to Legumain
宿主	Rabbit
经测试应用	适用于: WB
种属反应性	与反应: Human 预测可用于: Mouse, Rat 
免疫原	Recombinant fragment. This information is proprietary to Abcam and/or its suppliers.
阳性对照	Human fetal kidney lysate; JAR, HeLa and 293 cell lysates.
常规说明	This product is a recombinant monoclonal antibody, which offers several advantages including: <ul style="list-style-type: none"> - High batch-to-batch consistency and reproducibility - Improved sensitivity and specificity - Long-term security of supply - Animal-free production For more information see here . Our RabMAb [®] technology is a patented hybridoma-based technology for making rabbit monoclonal antibodies. For details on our patents, please refer to RabMAb[®] patents .

性能

形式	Liquid
存放说明	Shipped at 4°C. Store at +4°C short term (1-2 weeks). Upon delivery aliquot. Store at -20°C long term. Avoid freeze / thaw cycle.
存储溶液	pH: 7.2 Preservative: 0.01% Sodium azide Constituents: 59% PBS, 40% Glycerol (glycerin, glycerine), 0.05% BSA
纯度	Protein A purified
克隆	单克隆
克隆编号	EPR14718
同种型	IgG

应用

The Abpromise guarantee

Abpromise™承诺保证使用ab183028于以下的经测试应用

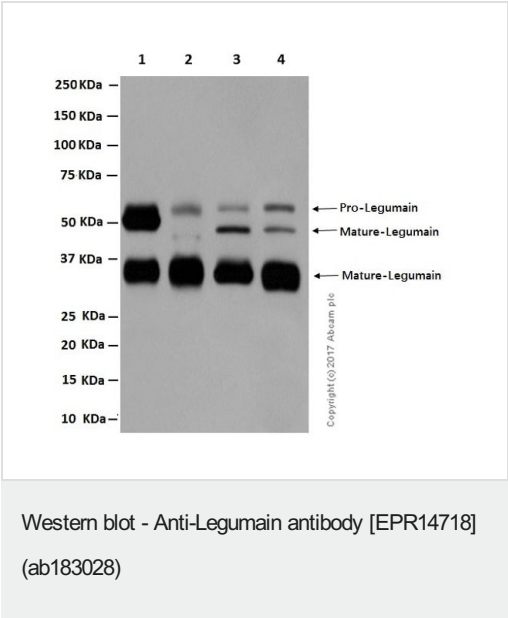
“应用说明”部分 下显示的仅为推荐的起始稀释度;实际最佳的稀释度/浓度应由使用者检定。

应用	Ab评论	说明
WB	★☆☆☆☆ (1)	1/10000 - 1/50000. Predicted molecular weight: 49 kDa.

靶标

功能	Has a strict specificity for hydrolysis of asparaginyl bonds. Can also cleave aspartyl bonds slowly, especially under acidic conditions. May be involved in the processing of proteins for MHC class II antigen presentation in the lysosomal/endosomal system.
组织特异性	Ubiquitous. Particularly abundant in kidney, heart and placenta.
序列相似性	Belongs to the peptidase C13 family.
翻译后修饰	Glycosylated.
细胞定位	Lysosome.

图片



All lanes : Anti-Legumain antibody [EPR14718] (ab183028) at 1/10000 dilution

- Lane 1 :** Human fetal kidney tissue lysate
- Lane 2 :** JAR (human placenta choriocarcinoma cell line) whole cell lysate
- Lane 3 :** HeLa (human epithelial cell line from cervix adenocarcinoma) whole cell lysate
- Lane 4 :** HEK-293 (human epithelial cell line from embryonic kidney) whole cell lysate


Lysates/proteins at 20 µg per lane.

Predicted band size: 49 kDa


Exposure time: 3 minutes

Actual band at: 36kDa, 46kDa, 56kDa


Why choose a recombinant antibody?




Research with confidence
Consistent and reproducible results



Long-term and scalable supply
Recombinant technology



Success from the first experiment
Confirmed specificity



Ethical standards compliant
Animal-free production

Anti-Legumain antibody [EPR14718] (ab183028)

Please note: All products are "FOR RESEARCH USE ONLY. NOT FOR USE IN DIAGNOSTIC PROCEDURES"

Our Abpromise to you: Quality guaranteed and expert technical support

- Replacement or refund for products not performing as stated on the datasheet
- Valid for 12 months from date of delivery
- Response to your inquiry within 24 hours
- We provide support in Chinese, English, French, German, Japanese and Spanish
- Extensive multi-media technical resources to help you
- We investigate all quality concerns to ensure our products perform to the highest standards

If the product does not perform as described on this datasheet, we will offer a refund or replacement. For full details of the Abpromise, please visit <https://www.abcam.cn/abpromise> or contact our technical team.

Terms and conditions

- Guarantee only valid for products bought direct from Abcam or one of our authorized distributors