


Anti-LEFTY2 antibody [7C5G1H6H10] ab115224

2 图像

概述

产品名称	Anti-LEFTY2抗体[7C5G1H6H10]
描述	小鼠单克隆抗体[7C5G1H6H10] to LEFTY2
宿主	Mouse
特异性	May cross react with the highly homologous LEFTY1.
经测试应用	适用于: WB, IHC-P
种属反应性	与反应: Human 预测可用于: Mouse, Rat 
免疫原	A recombinant form of 6X HIS tagged LEFTY2 (Human)
阳性对照	Human uterus, myometrium tissue
常规说明	<p>The Life Science industry has been in the grips of a reproducibility crisis for a number of years. Abcam is leading the way in addressing this with our range of recombinant monoclonal antibodies and knockout edited cell lines for gold-standard validation. Please check that this product meets your needs before purchasing.</p> <p>If you have any questions, special requirements or concerns, please send us an inquiry and/or contact our Support team ahead of purchase. Recommended alternatives for this product can be found below, along with publications, customer reviews and Q&As</p>

性能

形式	Liquid
存放说明	Shipped at 4°C. Upon delivery aliquot and store at -20°C. Avoid repeated freeze / thaw cycles.
存储溶液	pH: 7.20 Preservative: 0.01% Sodium azide Constituents: 0.424% Potassium phosphate, 0.88% Sodium chloride
纯度	Protein A purified
克隆	单克隆
克隆编号	7C5G1H6H10
骨髓瘤	Sp2/0
同种型	IgG2a

应用

The Abpromise guarantee **Abpromise™**承诺保证使用ab115224于以下的经测试应用

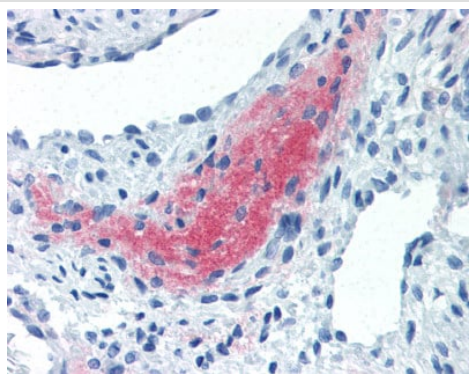
“应用说明”部分 下显示的仅为推荐的起始稀释度;实际最佳的稀释度/浓度应由使用者检定。

应用	Ab评论	说明
WB		1/2000. Predicted molecular weight: 41 kDa.
IHC-P		Use a concentration of 10 µg/ml. Perform heat mediated antigen retrieval with citrate buffer pH 6 before commencing with IHC staining protocol.

靶标

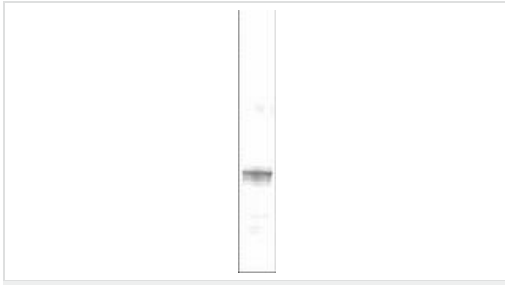
功能	Required for left-right (L-R) asymmetry determination of organ systems in mammals. May play a role in endometrial bleeding.
组织特异性	Mesenchymal cells of the endometrial stroma.
疾病相关	Defects in LEFTY2 are the cause of left-right axis malformations (LRAM) [MIM:601877]. The defect includes left pulmonary isomerism, with cardiac anomalies characterized by complete atrioventricular canal defect and hypoplastic left ventricle, and interrupted inferior vena cava.
序列相似性	Belongs to the TGF-beta family.
发展阶段	Transiently expressed before and during menstrual bleeding.
翻译后修饰	The processing of the protein may also occur at the second R-X-X-R site located at AA 132-135. Processing appears to be regulated in a cell-type specific manner.
细胞定位	Secreted.

图片



Human uterus, myometrium (formalin fixed, paraffin embedded) stained with ab115224 at 10 ug/ml followed by biotinylated anti Mouse IgG secondary antibody, alkaline phosphatase streptavidin and chromogen.

Immunohistochemistry (Formalin/PFA-fixed paraffin-embedded sections) - Anti-LEFTY2 antibody [7C5G1H6H10] (ab115224)



Western blot - Anti-LEFTY2 antibody [7C5G1H6H10]
(ab115224)

Anti-LEFTY2 antibody [7C5G1H6H10] (ab115224) at 1/2000 dilution + partially purified recombinant 6X His tagged human LEFTY2 at 1000 µg

Predicted band size: 41 kDa

Please note: All products are "FOR RESEARCH USE ONLY. NOT FOR USE IN DIAGNOSTIC PROCEDURES"

Our Abpromise to you: Quality guaranteed and expert technical support

- Replacement or refund for products not performing as stated on the datasheet
- Valid for 12 months from date of delivery
- Response to your inquiry within 24 hours
- We provide support in Chinese, English, French, German, Japanese and Spanish
- Extensive multi-media technical resources to help you
- We investigate all quality concerns to ensure our products perform to the highest standards

If the product does not perform as described on this datasheet, we will offer a refund or replacement. For full details of the Abpromise, please visit <https://www.abcam.cn/abpromise> or contact our technical team.

Terms and conditions

- Guarantee only valid for products bought direct from Abcam or one of our authorized distributors