

Anti-LDH-C antibody [EP1746Y] ab52747

RabMAb[®]

8 References **3 图像**

概述

产品名称	Anti-LDH-C抗体[EP1746Y]
描述	兔单克隆抗体[EP1746Y] to LDH-C
宿主	Rabbit
特异性	This antibody reacts with Lactate Dehydrogenase C / LDH-C. The immunogen sequence is 100% identical to Lactate Dehydrogenase C / LDH-C, but there is the possibility of cross-reactivity for lactate dehydrogenase A and lactate dehydrogenase B at 69% and 82%, respectively.
经测试应用	适用于: WB, IHC-P, Flow Cyt (Intra) 不适用于: ICC/IF or IP
种属反应性	与反应: Human
免疫原	Synthetic peptide within Human LDH-C aa 300 to the C-terminus (C terminal). The exact sequence is proprietary. Database link: P07864
阳性对照	WB: Human testis lysate. IHC-P: Human testis carcinoma tissue. Flow Cyt (intra): SK-BR-3 cells
常规说明	Our RabMAb [®] technology is a patented hybridoma-based technology for making rabbit monoclonal antibodies. For details on our patents, please refer to <u>RabMAb[®] patents</u> . The Life Science industry has been in the grips of a reproducibility crisis for a number of years. Abcam is leading the way in addressing this with our range of recombinant monoclonal antibodies and knockout edited cell lines for gold-standard validation. Please check that this product meets your needs before purchasing. If you have any questions, special requirements or concerns, please send us an inquiry and/or contact our Support team ahead of purchase. Recommended alternatives for this product can be found below, along with publications, customer reviews and Q&As Mouse, Rat: We have preliminary internal testing data to indicate this antibody may not react with these species. Please contact us for more information.

性能

形式	Liquid
存放说明	Shipped at 4°C. Upon delivery aliquot and store at -20°C. Avoid freeze / thaw cycles.

存储溶液	pH: 7.20 Preservative: 0.05% Sodium azide Constituents: 0.1% BSA, 40% Glycerol (glycerin, glycerine), 9.85% Tris glycine, 50% Tissue culture supernatant
纯度	Tissue culture supernatant
克隆	单克隆
克隆编号	EP1746Y
同种型	IgG

应用

The Abpromise guarantee

Abpromise™承诺保证使用ab52747于以下的经测试应用

“应用说明”部分 下显示的仅为推荐的起始稀释度;实际最佳的稀释度/浓度应由使用者检定。

应用	Ab评论	说明
WB		1/10000 - 1/20000. Detects a band of approximately 31 kDa (predicted molecular weight: 36 kDa).
IHC-P		Use at an assay dependent concentration. Perform heat mediated antigen retrieval with citrate buffer pH 6 before commencing with IHC staining protocol.
Flow Cyt (Intra)		1/40. <u>ab172730</u> - Rabbit monoclonal IgG, is suitable for use as an isotype control with this antibody.

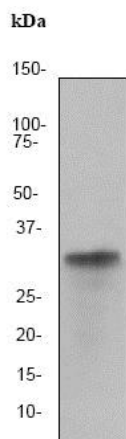
应用说明

Is unsuitable for ICC/IF or IP.

靶标

功能	Possible role in sperm motility.
通路	Fermentation; pyruvate fermentation to lactate; (S)-lactate from pyruvate: step 1/1.
序列相似性	Belongs to the LDH/MDH superfamily. LDH family.
细胞定位	Cytoplasm.

图片



Western blot - Anti-LDH-C antibody [EP1746Y] (ab52747)

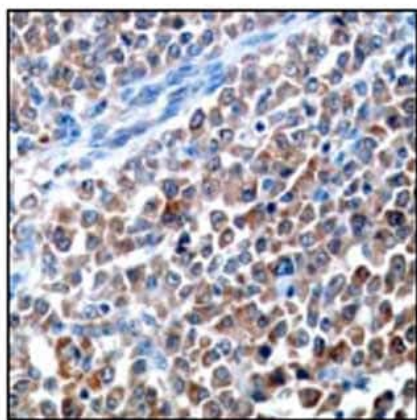
Anti-LDH-C antibody [EP1746Y] (ab52747) at 1/20000 dilution + Human testis lysate at 10 µg

Secondary

Goat anti-rabbit HRP labeled at 1/2000 dilution

Predicted band size: 36 kDa

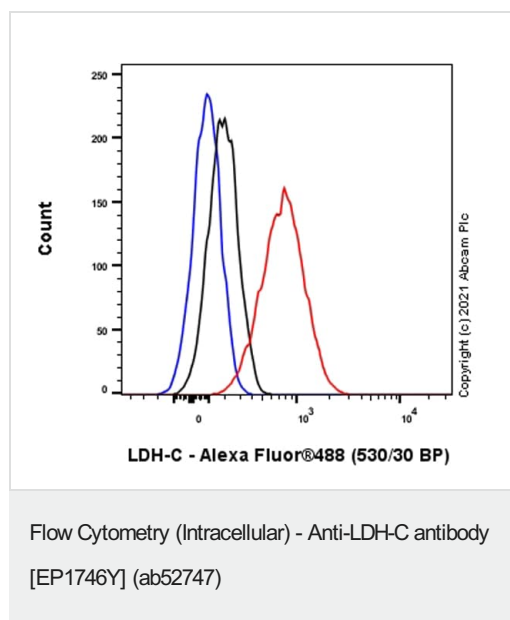
Observed band size: 31 kDa



Immunohistochemistry (Formalin/PFA-fixed paraffin-embedded sections) - Anti-LDH-C antibody [EP1746Y] (ab52747)

Immunohistochemical staining of paraffin-embedded human testis carcinoma using ab52747 at a 1/50 dilution.

Perform heat mediated antigen retrieval with citrate buffer pH 6 before commencing with IHC staining protocol.



Flow Cytometry analysis of SK-BR-3 (Human breast adenocarcinoma epithelial cell) cells labeling LDH-C with ab52747 at 1/40 dilution (10 µg/mL) (Red). Cells were fixed with 4% Paraformaldehyde and permeabilised with 90% Methanol. A Goat anti rabbit IgG (Alexa Fluor® 488, [ab150077](#)) secondary antibody was used at 1/2000. Isotype control - Rabbit monoclonal IgG (Black). Unlabeled control - Cell without incubation with primary antibody and secondary antibody (Blue).

Please note: All products are "FOR RESEARCH USE ONLY. NOT FOR USE IN DIAGNOSTIC PROCEDURES"

Our Abpromise to you: Quality guaranteed and expert technical support

- Replacement or refund for products not performing as stated on the datasheet
- Valid for 12 months from date of delivery
- Response to your inquiry within 24 hours
- We provide support in Chinese, English, French, German, Japanese and Spanish
- Extensive multi-media technical resources to help you
- We investigate all quality concerns to ensure our products perform to the highest standards

If the product does not perform as described on this datasheet, we will offer a refund or replacement. For full details of the Abpromise, please visit <https://www.abcam.cn/abpromise> or contact our technical team.

Terms and conditions

- Guarantee only valid for products bought direct from Abcam or one of our authorized distributors