

Anti-LCAT antibody [EPR1384Y] ab51060

重组 RabMAb

5 References 6 图像

概述	
产品名称	Anti-LCAT抗体[EPR1384Y]
描述	兔单克隆抗体[EPR1384Y] to LCAT
宿主	Rabbit
经测试应用	适用于: IP, WB, IHC-P
种属反应性	与反应: Human
免疫原	Synthetic peptide within Human LCAT (C terminal). The exact sequence is proprietary. Database link: <b>P04180</b>
阳性对照	WB: Human serum and plasma lysates IHC-P: Human brain and liver tissue IP: Human plasma
常规说明	<p>This product is a recombinant monoclonal antibody, which offers several advantages including:</p> <ul style="list-style-type: none"><li>- High batch-to-batch consistency and reproducibility</li><li>- Improved sensitivity and specificity</li><li>- Long-term security of supply</li><li>- Animal-free production</li></ul> <p>For more information <a href="#">see here</a>.</p> <p>Our RabMAb<sup>®</sup> technology is a patented hybridoma-based technology for making rabbit monoclonal antibodies. For details on our patents, please refer to <a href="#">RabMAb<sup>®</sup> patents</a>.</p> <p>Mouse, Rat: We have preliminary internal testing data to indicate this antibody may not react with these species. Please contact us for more information.</p>
性能	
形式	Liquid
存放说明	Shipped at 4°C. Store at +4°C short term (1-2 weeks). Upon delivery aliquot. Store at -20°C long term. Avoid freeze / thaw cycle.
存储溶液	pH: 7.2 Preservative: 0.01% Sodium azide Constituents: 0.05% BSA, 40% Glycerol (glycerin, glycerine), 59% PBS
纯度	Protein A purified
克隆	单克隆

克隆编号EPR1384Y

同种型IgG

应用

The Abpromise guarantee

Abpromise™承诺保证使用ab51060于以下的经测试应用

“应用说明”部分 下显示的仅为推荐的起始稀释度;实际最佳的稀释度/浓度应由使用者检定。

应用	Ab评论	说明
IP		1/20. <b>For unpurified use at 1/100.</b>
WB		1/10000. Detects a band of approximately 62 kDa (predicted molecular weight: 50 kDa).
IHC-P		1/100 - 1/250. Perform heat mediated antigen retrieval before commencing with IHC staining protocol. <b>See IHC antigen retrieval protocols.</b>  The immunostaining was performed on a Leica Biosystems BOND® RX instrument.

靶标

功能

Central enzyme in the extracellular metabolism of plasma lipoproteins. Synthesized mainly in the liver and secreted into plasma where it converts cholesterol and phosphatidylcholines (lecithins) to cholesteryl esters and lysophosphatidylcholines on the surface of high and low density lipoproteins (HDLs and LDLs). The cholesterol ester is then transported back to the liver. Has a preference for plasma 16:0-18:2 or 18:O-18:2 phosphatidylcholines. Also produced in the brain by primary astrocytes, and esterifies free cholesterol on nascent APOE-containing lipoproteins secreted from glia and influences cerebral spinal fluid (CSF) APOE- and APOA1 levels. Together with APOE and the cholesterol transporter ABCA1, plays a key role in the maturation of glial-derived, nascent lipoproteins. Required for remodeling high-density lipoprotein particles into their spherical forms.

组织特异性

Expressed mainly in brain, liver and testes. Secreted into plasma and cerebral spinal fluid. In liver, expressed in HEPG2 hepatocytes.

疾病相关

Defects in LCAT are the cause of lecithin-cholesterol acyltransferase deficiency (LCATD) [MIM:245900]; also called Norum disease. LCATD is a disorder of lipoprotein metabolism characterized by inadequate esterification of plasmatic cholesterol. Two clinical forms are recognized: familial LCAT deficiency and fish-eye disease. Familial LCAT deficiency is associated with a complete absence of alpha and beta LCAT activities and results in esterification anomalies involving both HDL (alpha-LCAT activity) and LDL (beta-LCAT activity). It causes a typical triad of diffuse corneal opacities, target cell hemolytic anemia, and proteinuria with renal failure.  
  
Defects in LCAT are a cause of fish-eye disease (FED) [MIM:136120]; also known as dyslipoproteinemic corneal dystrophy or alpha-LCAT deficiency. FED is due to a partial LCAT deficiency that affects only alpha-LCAT activity. It is characterized by low plasma HDL and corneal opacities due to accumulation of cholesterol deposits in the cornea ('fish-eye').

序列相似性

Belongs to the AB hydrolase superfamily. Lipase family.

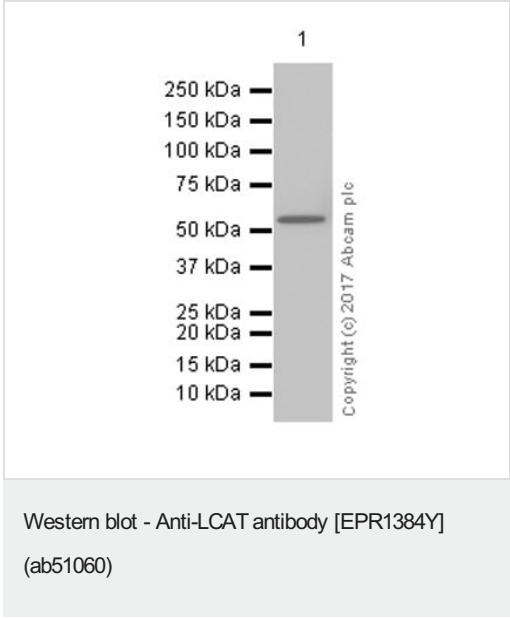
翻译后修饰

O- and N-glycosylated. O-glycosylation on Thr-431 and Ser-433 consists of sialylated galactose beta 1-->3N-acetylgalactosamine structures. N-glycosylated sites contain sialylated triantennary and/or biantennary complex structures.

细胞定位

Secreted. Secreted into blood plasma. Produced in astrocytes and secreted into cerebral spinal fluid.

图片



Anti-LCAT antibody [EPR1384Y] (ab51060) at 1/10000 dilution (Purified) + Human plasma lysates at 15 µg

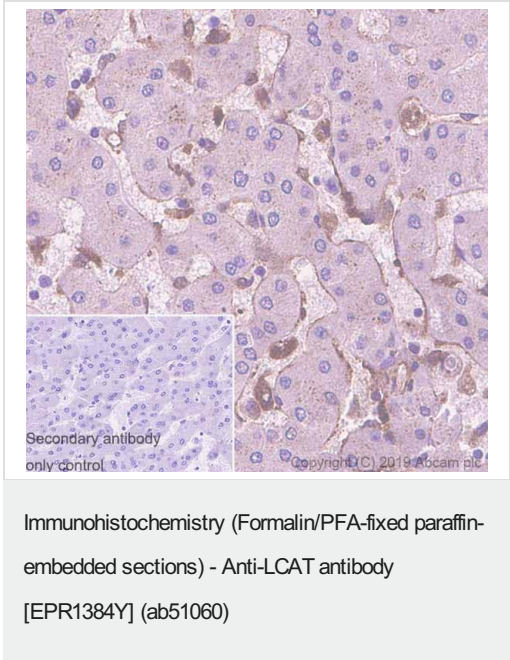
Secondary

Goat Anti-Rabbit IgG (HRP) with minimal cross-reactivity with human IgG at 1/2000 dilution

**Predicted band size:** 50 kDa

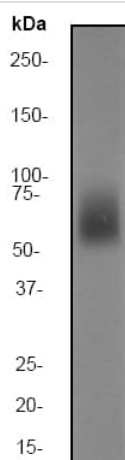
**Observed band size:** 62 kDa

Blocking/Diluting Buffer and concentration: 5% NFDM/TBST



Immunohistochemistry (Formalin/PFA-fixed paraffin-embedded sections) analysis of human liver tissue sections labeling LCAT with purified ab51060 at 1/100 dilution (1.03 µg/mL). Heat mediated antigen retrieval was performed using Bond™ Epitope Retrieval Solution 2 (pH 9.0) . Rabbit specific IHC polymer detection kit HRP/DAB (**ab209101**) was used as the secondary antibody. Negative control: PBS instead of the primary antibody. Hematoxylin was used as a counterstain.

The immunostaining was performed on a Leica Biosystems BOND® RX instrument.



Western blot - Anti-LCAT antibody [EPR1384Y]  
(ab51060)

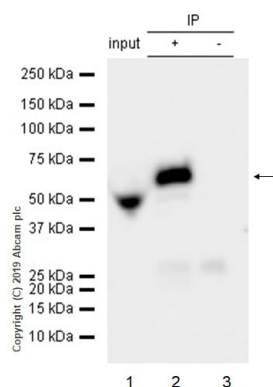
Anti-LCAT antibody [EPR1384Y] (ab51060) at 1/10000 dilution  
(unpurified) + Human serum at 10 µg

### Secondary

Goat anti-Rabbit HRP at 1/2000 dilution

**Predicted band size:** 50 kDa

**Observed band size:** 62 kDa



Immunoprecipitation - Anti-LCAT antibody  
[EPR1384Y] (ab51060)

ab51060 (Purified) at 1/20 dilution (0.5ug) immunoprecipitating  
LCAT in Human plasma.

Lane 1 (input): Human plasma 10ug

Lane 2 (+): ab51060 & Human plasma

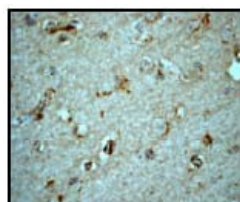
Lane 3 (-): Rabbit monoclonal IgG (**ab172730**) instead of ab51060  
in Human plasma

For western blotting, VeriBlot for IP Detection Reagent (HRP)

(**ab131366**) was used at 1/1000 dilution.

Blocking and diluting buffer: 5% NFDm/TBST.

50 kDa band in input lane should be human IgG heavy chain.



Immunohistochemistry (Formalin/PFA-fixed paraffin-  
embedded sections) - Anti-LCAT antibody  
[EPR1384Y] (ab51060)

ab51060 (unpurified) at 1/100 dilution staining LCAT in paraffin  
embedded human brain tissue by Immunohistochemistry. Heat  
mediated antigen retrieval was performed before commencing with  
IHC staining protocol.

### Why choose a recombinant antibody?



**Research with confidence**  
Consistent and reproducible results



**Long-term and scalable supply**  
Recombinant technology



**Success from the first experiment**  
Confirmed specificity



**Ethical standards compliant**  
Animal-free production

Anti-LCAT antibody [EPR1384Y] (ab51060)

**Please note:** All products are "FOR RESEARCH USE ONLY. NOT FOR USE IN DIAGNOSTIC PROCEDURES"

### Our Abpromise to you: Quality guaranteed and expert technical support

---

- Replacement or refund for products not performing as stated on the datasheet
- Valid for 12 months from date of delivery
- Response to your inquiry within 24 hours
- We provide support in Chinese, English, French, German, Japanese and Spanish
- Extensive multi-media technical resources to help you
- We investigate all quality concerns to ensure our products perform to the highest standards

If the product does not perform as described on this datasheet, we will offer a refund or replacement. For full details of the Abpromise, please visit <https://www.abcam.cn/abpromise> or contact our technical team.

### Terms and conditions

---

- Guarantee only valid for products bought direct from Abcam or one of our authorized distributors