

Anti-LAT antibody [Y109] ab32070

重组 RabMAb

1 References [4 图像](#)

概述

产品名称	Anti-LAT抗体[Y109]
描述	兔单克隆抗体[Y109] to LAT
宿主	Rabbit
特异性	This antibody is specific for LAT. It detects the long and short forms of LAT.
经测试应用	适用于: WB, IHC-P, Flow Cyt (Intra) 不适用于: ICC/IF
种属反应性	与反应: Human
免疫原	Synthetic peptide within Human LAT aa 200-300. The exact sequence is proprietary. Corresponds to residues surrounding the GRB2 binding motif 2.
阳性对照	WB: Jurkat whole cell lysate (ab7899). IHC-P: Human lymph node. Flow Cyt (intra): Jurkat cells
常规说明	This product is a recombinant monoclonal antibody, which offers several advantages including: <ul style="list-style-type: none">- High batch-to-batch consistency and reproducibility- Improved sensitivity and specificity- Long-term security of supply- Animal-free production For more information see here . Our RabMAb [®] technology is a patented hybridoma-based technology for making rabbit monoclonal antibodies. For details on our patents, please refer to RabMAb[®] patents . Mouse, Rat: We have preliminary internal testing data to indicate this antibody may not react with these species. Please contact us for more information.

性能

形式	Liquid
存放说明	Shipped at 4°C. Upon delivery aliquot and store at -20°C. Avoid freeze / thaw cycles.
存储溶液	pH: 7.20 Preservative: 0.01% Sodium azide Constituents: 49% PBS, 50% Glycerol (glycerin, glycerine), 0.05% BSA
纯度	Protein A purified

克隆	单克隆
克隆编号	Y109
同种型	IgG

应用

The Abpromise guarantee **Abpromise™**承诺保证使用ab32070于以下的经测试应用

“应用说明”部分下显示的仅为推荐的起始稀释度;实际最佳的稀释度/浓度应由使用者检定。

应用	Ab评论	说明
WB		1/500. Detects a band of approximately 35 kDa (predicted molecular weight: 28 kDa).
IHC-P		Use at an assay dependent concentration. Perform heat mediated antigen retrieval with citrate buffer pH 6 before commencing with IHC staining protocol.
Flow Cyt (Intra)		Use at an assay dependent concentration.

应用说明 Is unsuitable for ICC/IF.

靶标

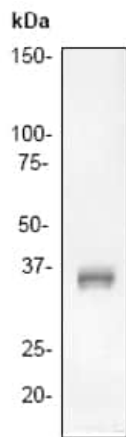
功能 Required for TCR (T-cell antigen receptor)- and pre-TCR-mediated signaling, both in mature T-cells and during their development. Involved in FCGR3 (low affinity immunoglobulin gamma Fc region receptor III)-mediated signaling in natural killer cells and FCER1 (high affinity immunoglobulin epsilon receptor)-mediated signaling in mast cells. Couples activation of these receptors and their associated kinases with distal intracellular events such as mobilization of intracellular calcium stores, PKC activation, MAPK activation or cytoskeletal reorganization through the recruitment of PLCG1, GRB2, GRAP2, and other signaling molecules.

组织特异性 Expressed in thymus, T-cells, NK cells, mast cells and, at lower levels, in spleen. Present in T-cells but not B-cells (at protein level).

翻译后修饰 Phosphorylated on tyrosines by ZAP-70 upon TCR activation, or by SYK upon other immunoreceptor activation; which leads to the recruitment of multiple signaling molecules. Is one of the most prominently tyrosine-phosphorylated proteins detected following TCR engagement. May be dephosphorylated by PTPRJ. Palmitoylation of Cys-26 and Cys-29 is required for raft targeting and efficient phosphorylation.

细胞定位 Cell membrane. Present in lipid rafts.

图片

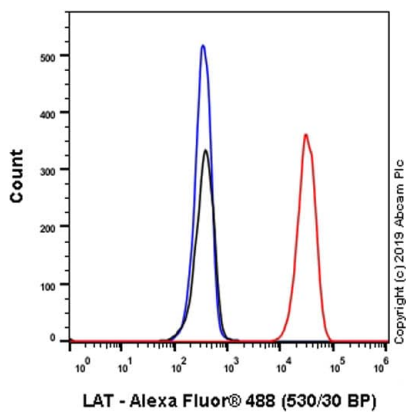


Western blot - Anti-LAT antibody [Y109] (ab32070)

Anti-LAT antibody [Y109] (ab32070) at 1/500 dilution + Jurkat (Human T cell leukemia cell line from peripheral blood) whole cell lysate

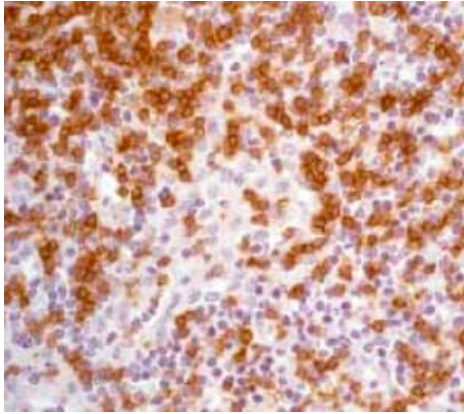
Predicted band size: 28 kDa

Observed band size: 35 kDa



Flow Cytometry (Intracellular) - Anti-LAT antibody [Y109] (ab32070)

Flow Cytometry analysis of Jurkat (Human T cell leukemia T lymphocyte) cells labeling LAT with purified ab32070 at 1/100 dilution (10 µg/mL) (Red). Cells were fixed with 4% Paraformaldehyde and permeabilised with 90% Methanol. A Goat anti rabbit IgG (Alexa Fluor® 488, **ab150077**) secondary antibody was used at 1/2000. Isotype control - Rabbit monoclonal IgG (Black). Unlabeled control - Cells without incubation with primary antibody and secondary antibody (Blue).



Ab32070, at a dilution of 1/100, staining LAT in paraffin embedded human lymph node tissue by Immunohistochemistry.

Perform heat mediated antigen retrieval with citrate buffer pH 6 before commencing with IHC staining protocol.

Immunohistochemistry (Formalin/PFA-fixed paraffin-embedded sections) - Anti-LAT antibody [Y109] (ab32070)

Why choose a recombinant antibody?



Anti-LAT antibody [Y109] (ab32070)

Please note: All products are "FOR RESEARCH USE ONLY. NOT FOR USE IN DIAGNOSTIC PROCEDURES"

Our Abpromise to you: Quality guaranteed and expert technical support

- Replacement or refund for products not performing as stated on the datasheet
- Valid for 12 months from date of delivery
- Response to your inquiry within 24 hours
- We provide support in Chinese, English, French, German, Japanese and Spanish
- Extensive multi-media technical resources to help you
- We investigate all quality concerns to ensure our products perform to the highest standards

If the product does not perform as described on this datasheet, we will offer a refund or replacement. For full details of the Abpromise, please visit <https://www.abcam.cn/abpromise> or contact our technical team.

Terms and conditions

-
- Guarantee only valid for products bought direct from Abcam or one of our authorized distributors