

Anti-LAMP1 antibody - Lysosome Marker ab30687

★★★★★ [4 Abreviews](#) [23 References](#) [1 图像](#)

概述

产品名称	Anti-LAMP1抗体- Lysosome Marker
描述	兔多克隆抗体to LAMP1 - Lysosome Marker
宿主	Rabbit
经测试应用	适用于: ICC 不适用于: WB
种属反应性	与反应: Drosophila melanogaster
免疫原	Synthetic peptide conjugated to KLH derived from within residues 1 - 100 of Fruit fly (Drosophila melanogaster) LAMP1.参阅Abcam的 专有抗源政策 (Peptide available as ab32341 .)
阳性对照	ICC: Drosophila S2 Schneider cells.
常规说明	<p>The Life Science industry has been in the grips of a reproducibility crisis for a number of years. Abcam is leading the way in addressing this with our range of recombinant monoclonal antibodies and knockout edited cell lines for gold-standard validation. Please check that this product meets your needs before purchasing.</p> <p>If you have any questions, special requirements or concerns, please send us an inquiry and/or contact our Support team ahead of purchase. Recommended alternatives for this product can be found below, along with publications, customer reviews and Q&As</p>

性能

形式	Liquid
存放说明	Shipped at 4°C. Store at +4°C short term (1-2 weeks). Upon delivery aliquot. Store at -20°C or -80°C. Avoid freeze / thaw cycle.
存储溶液	pH: 7.40 Preservative: 0.02% Sodium azide Constituent: PBS Batches of this product that have a concentration < 1mg/ml may have BSA added as a stabilising agent. If you would like information about the formulation of a specific lot, please contact our scientific support team who will be happy to help.
纯度	Immunogen affinity purified
克隆	多克隆

同种型

IgG

应用

The Abpromise guarantee

Abpromise™ 承诺保证使用ab30687于以下的经测试应用

“应用说明”部分 下显示的仅为推荐的起始稀释度;实际最佳的稀释度/浓度应由使用者检定。

应用	Ab评论	说明
ICC		Use a concentration of 0.2 µg/ml.

应用说明

Is unsuitable for WB.

靶标

功能

Presents carbohydrate ligands to selectins. Also implicated in tumor cell metastasis.

序列相似性

Belongs to the LAMP family.

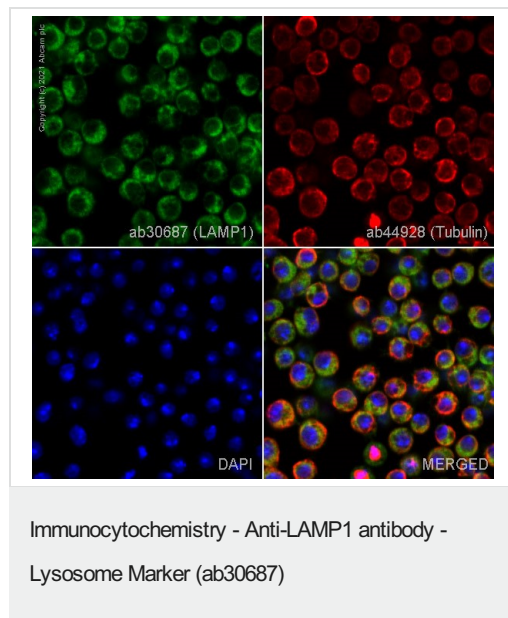
翻译后修饰

O- and N-glycosylated; some of the 18 N-linked glycans are polylactosaminoglycans.

细胞定位

Cell membrane. Endosome membrane. Lysosome membrane. This protein shuttles between lysosomes, endosomes, and the plasma membrane.

图片



ab30687 staining LAMP1 in Drosophila S2 Schneider cells. The cells were fixed with 100% methanol (5 min) then permeabilized with 0.1% Triton X-100 for 5 minutes and then blocked with 1% BSA/10% normal goat serum/0.3M glycine in 0.1% PBS-Tween for 1h. The cells were then incubated with ab30687 at 0.2µg/ml concentration and **ab44928** (Mouse monoclonal to Tubulin) at 0.2µg/ml concentration overnight at 4°C followed by a further incubation at room temperature for 1h with a goat secondary antibody to rabbit IgG (Alexa Fluor® 488) (**ab150081**) at 2µg/ml (shown in green) and a goat secondary antibody to mouse IgG (Alexa Fluor® 594) (**ab150120**) at 2µg/ml (shown in red). Nuclear DNA was labelled in blue with DAPI.

Image was taken with a confocal microscope (Leica-Microsystems TCS SP8).

Please note: All products are "FOR RESEARCH USE ONLY. NOT FOR USE IN DIAGNOSTIC PROCEDURES"

Our Abpromise to you: Quality guaranteed and expert technical support

- Replacement or refund for products not performing as stated on the datasheet

- Valid for 12 months from date of delivery
- Response to your inquiry within 24 hours
- We provide support in Chinese, English, French, German, Japanese and Spanish
- Extensive multi-media technical resources to help you
- We investigate all quality concerns to ensure our products perform to the highest standards

If the product does not perform as described on this datasheet, we will offer a refund or replacement. For full details of the Abpromise, please visit <https://www.abcam.cn/abpromise> or contact our technical team.

Terms and conditions

- Guarantee only valid for products bought direct from Abcam or one of our authorized distributors