


### Anti-LAMP1 antibody [EPR4204] - Lysosome Marker ab108597







[4 Abreviews](#)
[11 References](#)
[7 图像](#)

#### 概述

产品名称	Anti-LAMP1抗体[EPR4204] - Lysosome Marker
描述	兔单克隆抗体[EPR4204] to LAMP1 - Lysosome Marker
宿主	Rabbit
经测试应用	<b>适用于:</b> WB, IHC-P <b>不适用于:</b> Flow Cyt, ICC/IF or IP
种属反应性	<b>与反应:</b> Human
免疫原	Synthetic peptide. This information is proprietary to Abcam and/or its suppliers.
阳性对照	WB: HeLa, JAR, A431 and Jurkat lysates. IHC-P: human liver carcinoma and kidney tissue.
常规说明	<p>This product is a recombinant monoclonal antibody, which offers several advantages including:</p> <ul style="list-style-type: none"> <li>- High batch-to-batch consistency and reproducibility</li> <li>- Improved sensitivity and specificity</li> <li>- Long-term security of supply</li> <li>- Animal-free production</li> </ul> <p>For more information <a href="#">see here</a>.</p> <p>Our RabMAb<sup>®</sup> technology is a patented hybridoma-based technology for making rabbit monoclonal antibodies. For details on our patents, please refer to <a href="#">RabMAb<sup>®</sup> patents</a>.</p> <p>Mouse, Rat: We have preliminary internal testing data to indicate this antibody may not react with these species. Please contact us for more information.</p>

#### 性能

形式	Liquid
存放说明	Shipped at 4°C. Store at -20°C. Stable for 12 months at -20°C.
存储溶液	pH: 7.2 Preservative: 0.01% Sodium azide Constituents: PBS, 40% Glycerol, 0.05% BSA
纯度	Protein A purified
克隆	单克隆
克隆编号	EPR4204

同种型

lgG

应用

The Abpromise guarantee

Abpromise™承诺保证使用ab108597于以下的经测试应用

“应用说明”部分 下显示的仅为推荐的起始稀释度;实际最佳的稀释度/浓度应由使用者检定。

应用	Ab评论	说明
WB	★★★★★ (2)	1/1000 - 1/10000. Detects a band of approximately 120 kDa (predicted molecular weight: 45 kDa).
IHC-P	★★★★★ (1)	1/100 - 1/400. Perform heat mediated antigen retrieval with citrate buffer pH 6 before commencing with IHC staining protocol.

应用说明

Is unsuitable for Flow Cyt, ICC/IF or IP.

靶标

功能

Presents carbohydrate ligands to selectins. Also implicated in tumor cell metastasis.

序列相似性

Belongs to the LAMP family.

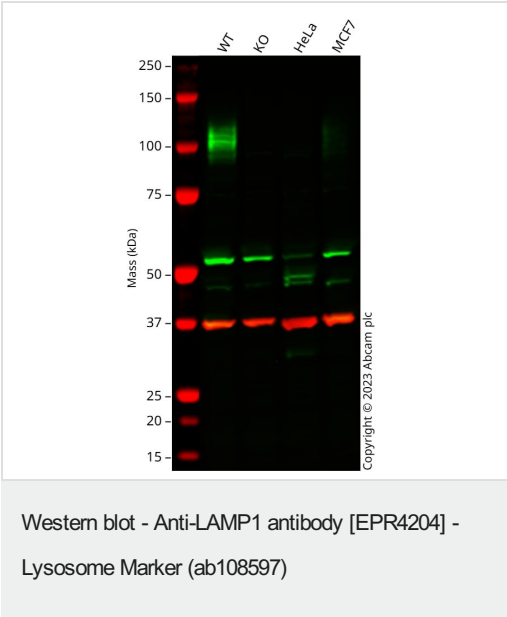
翻译后修饰

O- and N-glycosylated; some of the 18 N-linked glycans are polylactosaminoglycans.

细胞定位

Cell membrane. Endosome membrane. Lysosome membrane. This protein shuttles between lysosomes, endosomes, and the plasma membrane.

图片



**All lanes** : Anti-LAMP1 antibody [EPR4204] - Lysosome Marker (ab108597) at 1/1000 dilution

**Lane 1** : Wild-type HCT 116 cell lysate

**Lane 2** : LAMP1 knockout HCT 116 cell lysate

**Lane 3** : HeLa cell lysate

**Lane 4** : MCF7 cell lysate

Lysates/proteins at 20 µg per lane.

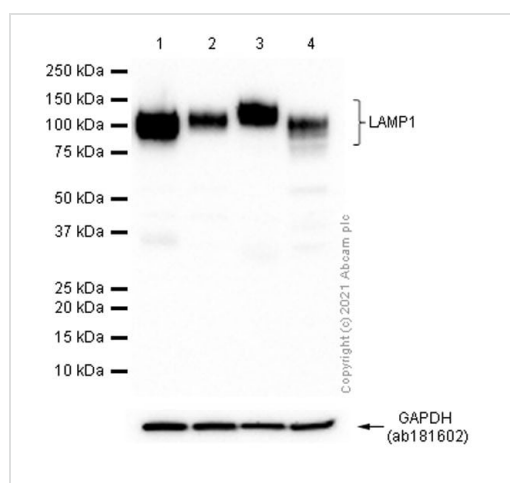
Performed under reducing conditions.

**Predicted band size:** 45 kDa

**Observed band size:** 100-120 kDa

Western blot: Anti-LAMP1 antibody [EPR4204] - Lysosome Marker

staining at 1/1000 dilution, shown in green; Mouse anti-GAPDH antibody [6C5] (**ab8245**) loading control staining at 1/20000 dilution, shown in red. In Western blot, ab108597 was shown to bind specifically to LAMP1. A band was observed at 100-120 kDa in wild-type HCT 116 cell lysates with no signal observed at this size in LAMP1 knockout cell line. To generate this image, wild-type and LAMP1 knockout HCT 116 cell lysates were analysed. First, samples were run on an SDS-PAGE gel then transferred onto a nitrocellulose membrane. Membranes were blocked in 3% milk in TBS-0.1% Tween<sup>®</sup> 20 (TBS-T) before incubation with primary antibodies overnight at 4°C. Blots were washed four times in TBS-T, incubated with secondary antibodies for 1 h at room temperature, washed again four times then imaged. Secondary antibodies used were Goat anti-Rabbit IgG H&L 800CW and Goat anti-Mouse IgG H&L 680RD at 1/20000 dilution.



Western blot - Anti-LAMP1 antibody [EPR4204] - Lysosome Marker (ab108597)

**All lanes :** Anti-LAMP1 antibody [EPR4204] - Lysosome Marker (ab108597) at 1/5000 dilution

**Lane 1 :** HeLa (human cervix adenocarcinoma epithelial cell) whole cell lysate 20µg

**Lane 2 :** Jurkat (Human T cell leukemia T lymphocyte) whole cell lysate 20µg

**Lane 3 :** HepG2 (human hepatocellular carcinoma epithelial cell) whole cell lysate 20µg

**Lane 4 :** MCF7 (human breast adenocarcinoma epithelial cell) whole cell lysate 20µg

## Secondary

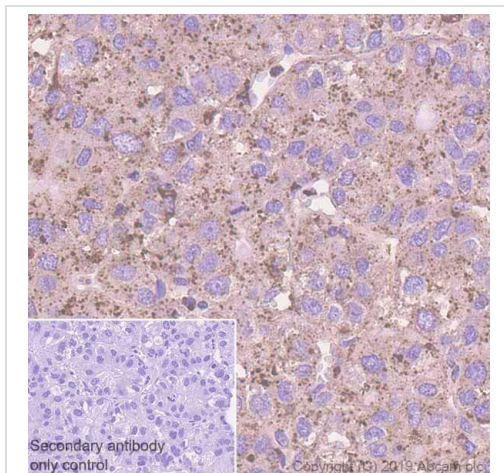
**All lanes :** Goat Anti-Rabbit IgG H&L (HRP) (**ab97051**) at 1/20000 dilution

**Predicted band size:** 45 kDa

**Observed band size:** 110 kDa

**Exposure time:** 5 seconds

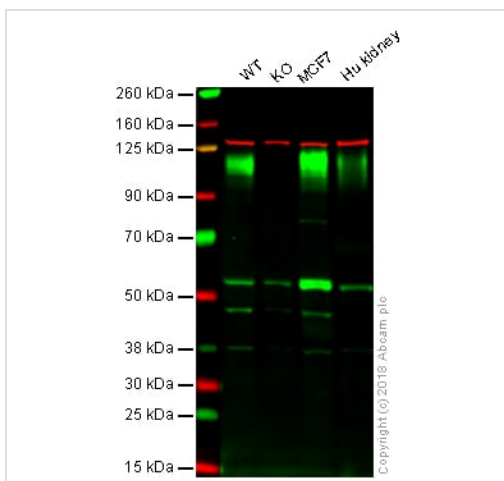
LAMP1 is a glycoprotein. The molecular weight observed is consistent with what has been described in the literature (PMID: 27061067, 15111122).



Immunohistochemistry (Formalin/PFA-fixed paraffin-embedded sections) - Anti-LAMP1 antibody [EPR4204] - Lysosome Marker (ab108597)

Immunohistochemistry (Formalin/PFA-fixed paraffin-embedded sections) analysis of human liver carcinoma tissue sections labeling LAMP1 with purified ab108597 at 1/400 dilution (0.36 µg/ml). Heat mediated antigen retrieval using Bond™ Epitope Retrieval Solution 2 (pH 9.0). Rabbit specific IHC polymer detection kit HRP/DAB ([ab209101](#)) was used as the secondary antibody.

Negative control: PBS instead of the primary antibody. Hematoxylin was used as a counterstain.



Western blot - Anti-LAMP1 antibody [EPR4204] - Lysosome Marker (ab108597)

**All lanes :** Anti-LAMP1 antibody [EPR4204] - Lysosome Marker (ab108597) at 1/1000 dilution

**Lane 1 :** Wild-type HAP1 whole cell lysate

**Lane 2 :** LAMP1 knockout HAP1 whole cell lysate

**Lane 3 :** MCF7 whole cell lysate

**Lane 4 :** Human Kidney whole cell lysate

Lysates/proteins at 20 µg per lane.

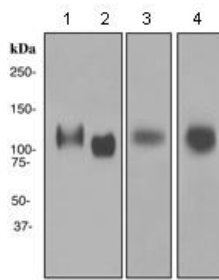
**Predicted band size:** 45 kDa

**Observed band size:** 110 kDa

**Lanes 1 -4:** Merged signal (red and green). Green - unpurified ab108597 observed at 110 kDa. Red - loading control, [ab18058](#), observed at 130 kDa.

ab108597 was shown to recognize LAMP1 in wild-type HAP1 cells as signal was lost at the expected MW in LAMP1 knockout cells. Additional cross-reactive bands were observed in the wild-type and knockout cells. Wild-type and LAMP1 knockout samples were subjected to SDS-PAGE. ab108597 and [ab18058](#) (Mouse anti-Vinculin loading control) were incubated overnight at 4°C at 1/1000 dilution and 1/20000 dilution respectively. Blots were developed with Goat anti-Rabbit IgG H&L (IRDye® 800CW) preabsorbed [ab216773](#) and Goat anti-Mouse IgG H&L (IRDye® 680RD)

preabsorbed **ab216776** secondary antibodies at 1/10000 dilution for 1 hour at room temperature before imaging.



Western blot - Anti-LAMP1 antibody [EPR4204] - Lysosome Marker (ab108597)

**All lanes :** Anti-LAMP1 antibody [EPR4204] - Lysosome Marker (ab108597) at 1/1000 dilution ((unpurified))

**Lane 1 :** HeLa cell lysate

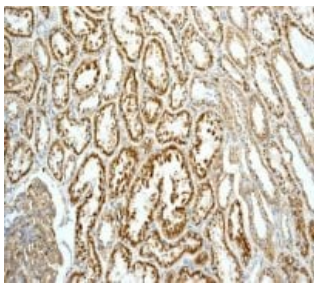
**Lane 2 :** JAR cell lysate

**Lane 3 :** Jurkat cell lysate

**Lane 4 :** A431 cell lysate

Lysates/proteins at 10 µg per lane.

**Predicted band size:** 45 kDa

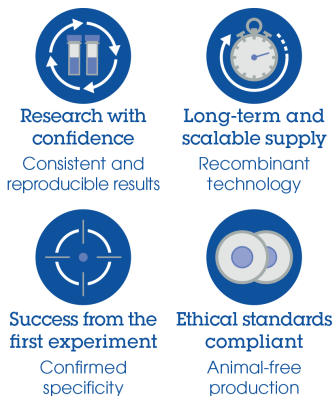


Immunohistochemistry (Formalin/PFA-fixed paraffin-embedded sections) - Anti-LAMP1 antibody [EPR4204] - Lysosome Marker (ab108597)

Immunohistochemical analysis of LAMP1 in paraffin embedded Human kidney tissue, using unpurified ab108597 at a dilution of 1/100.

Perform heat mediated antigen retrieval with citrate buffer pH 6 before commencing with IHC staining protocol.

#### Why choose a recombinant antibody?



Anti-LAMP1 antibody [EPR4204] - Lysosome Marker (ab108597)

**Please note:** All products are "FOR RESEARCH USE ONLY. NOT FOR USE IN DIAGNOSTIC PROCEDURES"

### **Our Abpromise to you: Quality guaranteed and expert technical support**

---

- Replacement or refund for products not performing as stated on the datasheet
- Valid for 12 months from date of delivery
- Response to your inquiry within 24 hours
- We provide support in Chinese, English, French, German, Japanese and Spanish
- Extensive multi-media technical resources to help you
- We investigate all quality concerns to ensure our products perform to the highest standards

If the product does not perform as described on this datasheet, we will offer a refund or replacement. For full details of the Abpromise, please visit <https://www.abcam.cn/abpromise> or contact our technical team.

### **Terms and conditions**

---

- Guarantee only valid for products bought direct from Abcam or one of our authorized distributors