

Anti-LAMP1 antibody ab62562

★★★★★ 1 Abreviews 20 References 5 图像

概述	
产品名称	Anti-LAMP1抗体
描述	兔多克隆抗体to LAMP1
宿主	Rabbit
经测试应用	适用于: IHC-P, ICC, WB
种属反应性	与反应: Mouse, Rat, Human
免疫原	A 15 amino acid peptide from near the centre of human LAMP1.
阳性对照	ICC: Human colon cells. WB: Mouse EL4 cell lysate. IHC-P: Rat colon tissue and human placenta tissue.
常规说明	<p>The Life Science industry has been in the grips of a reproducibility crisis for a number of years. Abcam is leading the way in addressing this with our range of recombinant monoclonal antibodies and knockout edited cell lines for gold-standard validation. Please check that this product meets your needs before purchasing.</p> <p>If you have any questions, special requirements or concerns, please send us an inquiry and/or contact our Support team ahead of purchase. Recommended alternatives for this product can be found below, along with publications, customer reviews and Q&As</p>

性能	
形式	Liquid
存放说明	Shipped at 4°C. Store at +4°C short term (1-2 weeks). Store at +4°C.
存储溶液	pH: 7.2 Preservative: 0.02% Sodium azide Constituent: PBS
纯度	Immunogen affinity purified
克隆	多克隆
同种型	IgG

应用	
The Abpromise guarantee	<u>Abpromise™</u> 承诺保证使用ab62562于以下的经测试应用

“应用说明”部分 下显示的仅为推荐的起始稀释度;实际最佳的稀释度/浓度应由使用者检定。

应用	Ab评论	说明
IHC-P		Use a concentration of 2 µg/ml.
ICC		Use a concentration of 20 µg/ml.
WB		Use a concentration of 1 - 2 µg/ml. Detects a band of approximately 110 kDa (predicted molecular weight: 45 kDa). Western blot for mouse only

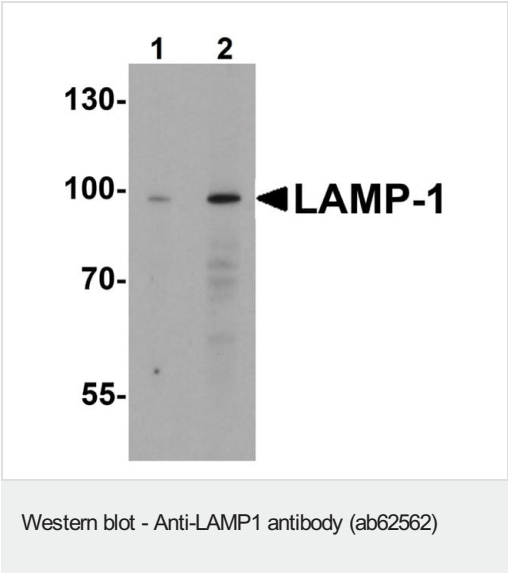
靶标

功能	Presents carbohydrate ligands to selectins. Also implicated in tumor cell metastasis.
序列相似性	Belongs to the LAMP family.
翻译后修饰	O- and N-glycosylated; some of the 18 N-linked glycans are polylactosaminoglycans.
细胞定位	Cell membrane. Endosome membrane. Lysosome membrane. This protein shuttles between lysosomes, endosomes, and the plasma membrane.

图片



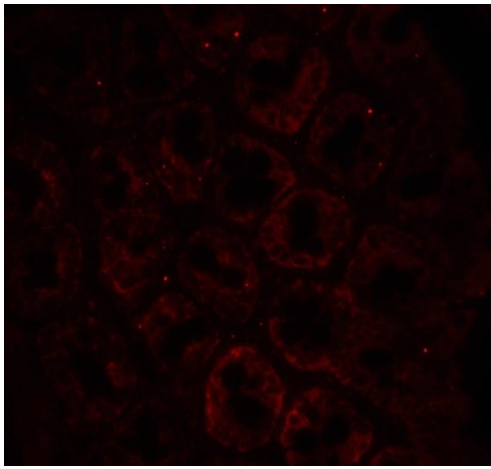
Immunocytochemical analysis of LAMP-1 in Human Colon cells using ab62562 at 20 ug/mL.



Lane 1 : Anti-LAMP1 antibody (ab62562) at 1 µg/ml
Lane 2 : Anti-LAMP1 antibody (ab62562) at 2 µg/ml

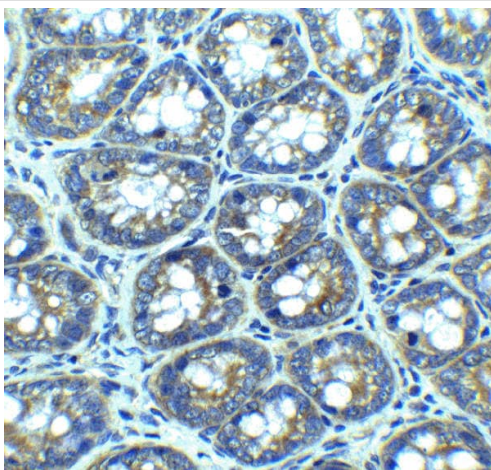
All lanes : EL4 cell lysate

Predicted band size: 45 kDa



Immunohistochemistry (Formalin/PFA-fixed paraffin-embedded sections) - Anti-LAMP1 antibody (ab62562)

Immunohistochemical analysis of LAMP-1 in rat colon tissue using ab62562 at 20 µg/ml.



Immunohistochemistry (Formalin/PFA-fixed paraffin-embedded sections) - Anti-LAMP1 antibody (ab62562)

Immunohistochemistry of LAMP-1 in rat colon tissue with ab62562 at 2.5 µg/ml.

Immunohistochemistry (Formalin/PFA-fixed paraffin-embedded sections) - Anti-LAMP1 antibody (ab62562)

Ab62562 staining human normal placenta. Staining is localised to cytoplasmic and nucleus compartments.

Left panel: with primary antibody at 2 µg/ml. Right panel: isotype control.

Sections were stained using an automated system DAKO Autostainer Plus , at room temperature. Sections were rehydrated and antigen retrieved with the Dako 3-in-1 AR buffers EDTA pH 9.0 in a DAKO PT Link. Slides were peroxidase blocked in 3% H₂O₂

in methanol for 10 minutes. They were then blocked with Dako Protein block for 10 minutes (containing casein 0.25% in PBS) then incubated with primary antibody for 20 minutes and detected with Dako Envision Flex amplification kit for 30 minutes. Colorimetric detection was completed with diaminobenzidine for 5 minutes. Slides were counterstained with Haematoxylin and coverslipped under DePeX. Please note that for manual staining we recommend to optimize the primary antibody concentration and incubation time (overnight incubation), and amplification may be requi

Please note: All products are "FOR RESEARCH USE ONLY. NOT FOR USE IN DIAGNOSTIC PROCEDURES"

Our Abpromise to you: Quality guaranteed and expert technical support

- Replacement or refund for products not performing as stated on the datasheet
- Valid for 12 months from date of delivery
- Response to your inquiry within 24 hours
- We provide support in Chinese, English, French, German, Japanese and Spanish
- Extensive multi-media technical resources to help you
- We investigate all quality concerns to ensure our products perform to the highest standards

If the product does not perform as described on this datasheet, we will offer a refund or replacement. For full details of the Abpromise, please visit <https://www.abcam.cn/abpromise> or contact our technical team.

Terms and conditions

- Guarantee only valid for products bought direct from Abcam or one of our authorized distributors