


Anti-Laminin beta 1 antibody [EPR3190(2)] ab109293

敲除验证 重组 RabMAb

2 References 4 图像

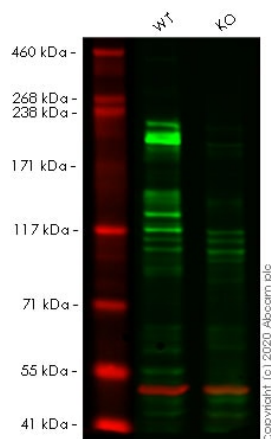
概述

产品名称	Anti-Laminin beta 1抗体[EPR3190(2)]
描述	兔单克隆抗体[EPR3190(2)] to Laminin beta 1
宿主	Rabbit
经测试应用	适用于: Flow Cyt (Intra), WB 不适用于: ICC/IF,IHC-P or IP
种属反应性	与反应: Human 预测可用于: Mouse, Rat 
免疫原	Synthetic peptide. This information is proprietary to Abcam and/or its suppliers.
阳性对照	WB: Human fetal kidney, HeLa and A431 lysates. Flow Cyt (intra): A431 cells
常规说明	<p>This product is a recombinant monoclonal antibody, which offers several advantages including:</p> <ul style="list-style-type: none">- High batch-to-batch consistency and reproducibility- Improved sensitivity and specificity- Long-term security of supply- Animal-free production <p>For more information see here.</p> <p>Our RabMAb® technology is a patented hybridoma-based technology for making rabbit monoclonal antibodies. For details on our patents, please refer to RabMAb® patents.</p>

性能

形式	Liquid
存放说明	Shipped at 4°C. Store at -20°C. Stable for 12 months at -20°C.
存储溶液	pH: 7.20 Preservative: 0.01% Sodium azide Constituents: 9% PBS, 40% Glycerol (glycerin, glycerine), 0.05% BSA, 50% Tissue culture supernatant
纯度	Protein A purified
克隆	单克隆
克隆编号	EPR3190(2)

同种型	IgG
应用	
<p>The Abpromise guarantee Abpromise™承诺保证使用ab109293于以下的经测试应用</p> <p>“应用说明”部分 下显示的仅为推荐的起始稀释度;实际最佳的稀释度/浓度应由使用者检定。</p>	
应用	Ab评论 说明
Flow Cyt (Intra)	1/100 - 1/500. ab172730 - Rabbit monoclonal IgG, is suitable for use as an isotype control with this antibody.
WB	1/1000 - 1/10000. Detects a band of approximately 220 kDa (predicted molecular weight: 198 kDa).
应用说明	Is unsuitable for ICC/IF,IHC-P or IP.
靶标	
功能	Binding to cells via a high affinity receptor, laminin is thought to mediate the attachment, migration and organization of cells into tissues during embryonic development by interacting with other extracellular matrix components.
序列相似性	Contains 13 laminin EGF-like domains. Contains 1 laminin IV type B domain. Contains 1 laminin N-terminal domain.
结构域	The alpha-helical domains I and II are thought to interact with other laminin chains to form a coiled coil structure. Domains VI and IV are globular.
细胞定位	Secreted > extracellular space > extracellular matrix > basement membrane. Major component.
图片	



Western blot - Anti-Laminin beta 1 antibody [EPR3190(2)] (ab109293)

All lanes : Anti-Laminin beta 1 antibody [EPR3190(2)] (ab109293) at 1/1000 dilution

Lane 1 : Wild-type HeLa cell lysate

Lane 2 : LAMB1 knockout HeLa cell lysate

Lysates/proteins at 20 µg per lane.

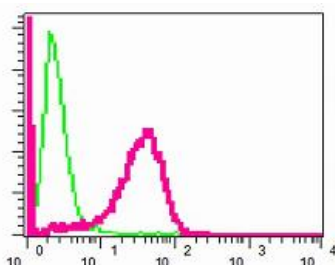
Performed under reducing conditions.

Predicted band size: 198 kDa

Observed band size: 200 kDa

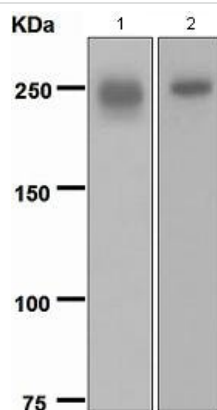
Lanes 1- 2: Merged signal (red and green). Green - ab109293 observed at 200 kDa. Red - Anti-alpha Tubulin antibody [DM1A] - Loading Control (**ab7291**) observed at 50 kDa.

ab109293 was shown to react with Laminin beta 1 in wild-type HeLa cells in western blot. Loss of signal was observed when knockout cell line **ab265414** (knockout cell lysate **ab257499**) was used. Wild-type HeLa and LAMB1 knockout HeLa cell lysates were subjected to SDS-PAGE. Membrane was blocked for 1 hour at room temperature in 0.1% TBST with 3% non-fat dried milk. ab109293 and Anti-alpha Tubulin antibody [DM1A] - Loading Control (**ab7291**) overnight at 4°C at a 1 in 1000 dilution and a 1 in 20000 dilution respectively. Blots were developed with Goat anti-Rabbit IgG H&L (IRDye®800CW) preadsorbed (**ab216773**) and Goat anti-Mouse IgG H&L (IRDye®680RD) preadsorbed (**ab216776**) secondary antibodies at 1 in 20000 dilution for 1 hour at room temperature before imaging.



Flow Cytometry (Intracellular) - Anti-Laminin beta 1 antibody [EPR3190(2)] (ab109293)

Intracellular flow cytometric analysis of permeabilized A431 cells using ab109293 (red) at a dilution of 1/100 or a rabbit IgG (negative) (green).



Western blot - Anti-Laminin beta 1 antibody
[EPR3190(2)] (ab109293)

All lanes : Anti-Laminin beta 1 antibody [EPR3190(2)] (ab109293)
at 1/1000 dilution

Lane 1 : Human fetal kidney lysate

Lane 2 : A431 cell lysate

Lysates/proteins at 10 µg per lane.

Predicted band size: 198 kDa

Why choose a
recombinant antibody?



**Research with
confidence**
Consistent and
reproducible results



**Long-term and
scalable supply**
Recombinant
technology



**Success from the
first experiment**
Confirmed
specificity



**Ethical standards
compliant**
Animal-free
production

Anti-Laminin beta 1 antibody [EPR3190(2)]
(ab109293)

Please note: All products are "FOR RESEARCH USE ONLY. NOT FOR USE IN DIAGNOSTIC PROCEDURES"

Our Abpromise to you: Quality guaranteed and expert technical support

- Replacement or refund for products not performing as stated on the datasheet
- Valid for 12 months from date of delivery
- Response to your inquiry within 24 hours
- We provide support in Chinese, English, French, German, Japanese and Spanish
- Extensive multi-media technical resources to help you
- We investigate all quality concerns to ensure our products perform to the highest standards

If the product does not perform as described on this datasheet, we will offer a refund or replacement. For full details of the Abpromise, please visit <https://www.abcam.cn/abpromise> or contact our technical team.

Terms and conditions

- Guarantee only valid for products bought direct from Abcam or one of our authorized distributors