


Anti-Lamin A + Lamin B1 + Lamin C antibody [EPR4068] ab108922

 **RabMAb**

★★★★★ **6 Abreviews** **29 References** **17 图像**

概述

| | |
|-------|---|
| 产品名称 | Anti-Lamin A + Lamin B1 + Lamin C抗体[EPR4068] |
| 描述 | 兔单克隆抗体[EPR4068] to Lamin A + Lamin B1 + Lamin C |
| 宿主 | Rabbit |
| 特异性 | The antibody recognizes full length Lamin A/B1/C and the cleaved small unit. |
| 经测试应用 | 适用于: ICC/IF, Flow Cyt (Intra), WB, IP, IHC-P |
| 种属反应性 | 与反应: Mouse, Rat, Human 预测可用于: <i>Spermophilus tridecemlineatus</i>  |
| 免疫原 | Synthetic peptide. This information is proprietary to Abcam and/or its suppliers. |
| 阳性对照 | WB: Mouse heart and rat heart tissue lysates and HeLa, HepG2 and HACAT cell lysates, ab83472 . IHC-P: Human ovarian carcinoma, human liver carcinoma, human breast, human uterus, human kidney mouse liver and rat liver tissues. ICC/IF: HeLa cells. Flow Cyt (intra): HeLa cells. IP: HepG2 lysate. |
| 常规说明 | <p>This product is a recombinant monoclonal antibody, which offers several advantages including:</p> <ul style="list-style-type: none"> - High batch-to-batch consistency and reproducibility - Improved sensitivity and specificity - Long-term security of supply - Animal-free production <p>For more information see here.</p> <p>Our RabMAb[®] technology is a patented hybridoma-based technology for making rabbit monoclonal antibodies. For details on our patents, please refer to RabMAb[®] patents.</p> |

性能

| | |
|------|---|
| 形式 | Liquid |
| 存放说明 | Shipped at 4°C. Store at +4°C short term (1-2 weeks). Upon delivery aliquot. Store at -20°C. Stable for 12 months at -20°C. |
| 存储溶液 | pH: 7.20 Preservative: 0.01% Sodium azide |

| | |
|------|--|
| | Constituents: 50% Glycerol (glycerin, glycerine), 49% PBS, 0.05% BSA |
| 纯度 | Protein A purified |
| 克隆 | 单克隆 |
| 克隆编号 | EPR4068 |
| 同种型 | IgG |

应用

The Abpromise guarantee
Abpromise™承诺保证使用ab108922于以下的经测试应用

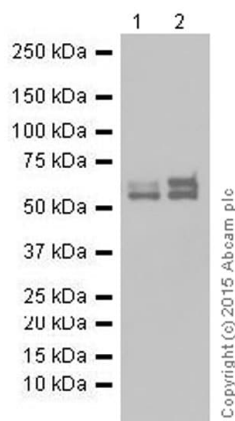
“应用说明”部分 下显示的仅为推荐的起始稀释度;实际最佳的稀释度/浓度应由使用者检定。

| 应用 | Ab评论 | 说明 |
|------------------|-----------|---|
| ICC/IF | | 1/100 - 1/250. |
| Flow Cyt (Intra) | | 1/20. |
| WB | ★★★★★ (4) | 1/1000 - 1/10000. Predicted molecular weight: 74 kDa. |
| IP | | 1/10 - 1/100. |
| IHC-P | | 1/100 - 1/250. Perform heat mediated antigen retrieval with Tris/EDTA buffer pH 9.0 before commencing with IHC staining protocol. |

靶标

| | |
|------|---|
| 细胞定位 | <p>Lamin A: Nucleus. Nucleus envelope. Farnesylation of prelamin-A/C facilitates nuclear envelope targeting and subsequent cleavage by ZMPSTE24/FACE1 to remove the farnesyl group produces mature lamin-A/C, which can then be inserted into the nuclear lamina. EMD is required for proper localization of non-farnesylated prelamin-A/C. Lamin B1: Nucleus inner membrane.</p> <p>Lamin C: Nucleus. Nucleus envelope. Farnesylation of prelamin-A/C facilitates nuclear envelope targeting and subsequent cleavage by ZMPSTE24/FACE1 to remove the farnesyl group produces mature lamin-A/C, which can then be inserted into the nuclear lamina. EMD is required for proper localization of non-farnesylated prelamin-A/C.</p> |
| 形式 | <p>Lamin C: There are 3 isoforms produced by alternative splicing. Isoform A also known as Lamin A; Isoform C also known as Lamin C; Isoform AΔ10 also known as Lamin AΔ10.</p> |

图片



Western blot - Anti-Lamin A + Lamin B1 + Lamin C antibody [EPR4068] (ab108922)

All lanes : Anti-Lamin A + Lamin B1 + Lamin C antibody [EPR4068] (ab108922) at 1/10000 dilution (purified)

Lane 1 : mouse heart lysate

Lane 2 : rat heart lysate

Lysates/proteins at 10 µg per lane.

Secondary

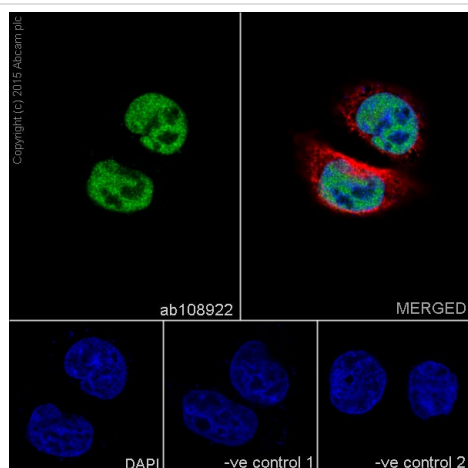
All lanes : HRP goat anti-rabbit IgG (H+L) at 1/100000 dilution

Predicted band size: 74 kDa

Additional bands at: 65 kDa (possible isoform), 70 kDa (possible isoform), 74 kDa (possible isoform)

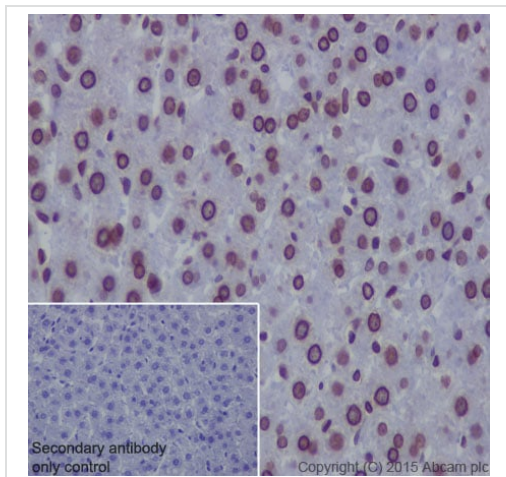
Blocking buffer: 5% NFDM/TBST

Dilution buffer: 5% NFDM/TBST



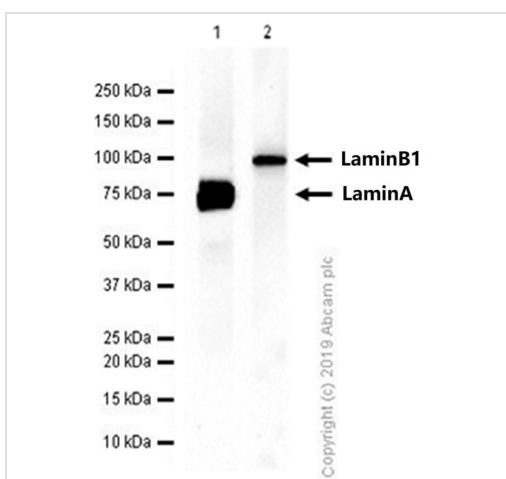
Immunocytochemistry/ Immunofluorescence - Anti-Lamin A + Lamin B1 + Lamin C antibody [EPR4068] (ab108922)

Immunofluorescence staining of HeLa cells with purified ab108922 at a working dilution of 1/250, counter-stained with DAPI. The secondary antibody was Alexa Fluor® 488 goat anti-rabbit (**ab150077**), used at a dilution of 1/1000. **ab7291**, a mouse anti-tubulin antibody (1/1000), was used to stain tubulin along with **ab150120** (Alexa Fluor® 594 goat anti-mouse, 1/1000), shown in the top right hand panel. The cells were fixed in 4% PFA and permeabilized using 0.1% Triton X 100. The negative controls are shown in bottom middle and right hand panels - for negative control 1, purified ab108922 was used at a dilution of 1/500 followed by an Alexa Fluor® 594 goat anti-mouse antibody (**ab150120**) at a dilution of 1/500. For negative control 2, **ab7291** (mouse anti-tubulin) was used at a dilution of 1/500 followed by an Alexa Fluor® 488 goat anti-rabbit antibody (**ab150077**) at a dilution of 1/400.



Immunohistochemistry (Formalin/PFA-fixed paraffin-embedded sections) - Anti-Lamin A + Lamin B1 + Lamin C antibody [EPR4068] (ab108922)

Immunohistochemical staining of paraffin embedded rat liver with purified ab108922 at a working dilution of 1/200. The secondary antibody used is HRP goat anti-rabbit IgG H&L ([ab97051](#)) at 1/500. The sample is counter-stained with hematoxylin. Antigen retrieval was performed using Tris-EDTA buffer, pH 9.0. PBS was used instead of the primary antibody as the negative control, and is shown in the inset.



Western blot - Anti-Lamin A + Lamin B1 + Lamin C antibody [EPR4068] (ab108922)

All lanes : Anti-Lamin A + Lamin B1 + Lamin C antibody [EPR4068] (ab108922) at 1/1000 dilution

Lane 1 : Recombinant Human Lamin A protein ([ab83472](#))

Lane 2 : GST tagged recombinant Human Lamin B1 protein (1 to 586) (91 kDa)

Lysates/proteins at 10 µg per lane.

Secondary

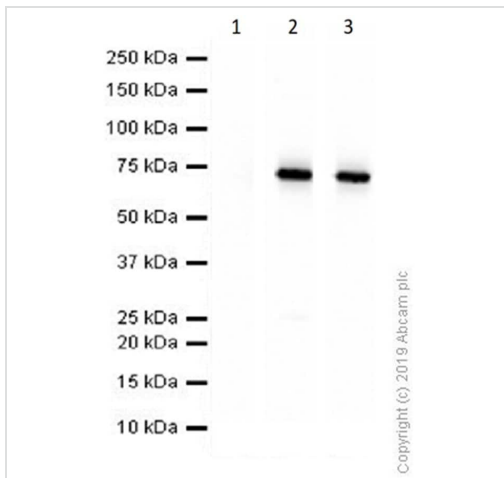
All lanes : Goat Anti-Rabbit IgG H&L (HRP) ([ab97051](#)) at 1/20000 dilution

Predicted band size: 74 kDa

Observed band size: 75, 91 kDa

Exposure time: 180 seconds

Blocking/Diluting buffer and concentration 5% NFDM/TBST



Western blot - Anti-Lamin A + Lamin B1 + Lamin C antibody [EPR4068] (ab108922)

Lane 1 : Anti-Lamin A + Lamin B1 + Lamin C antibody [EPR4068] (ab108922) at 1/1000 dilution

Lane 2 : Anti-Myc tag antibody at 1/10000 dilution

Lane 3 : Anti-DDDDK tag (Binds to FLAG® tag sequence) antibody [EPR20018-251] ([ab205606](#)) at 1/5000 dilution

All lanes : Myc and DDK tagged recombinant Human Lamin B2 protein

Lysates/proteins at 0.01 µg per lane.

Secondary

All lanes : Goat Anti-Rabbit IgG H&L (HRP) ([ab97051](#)) at 1/20000 dilution

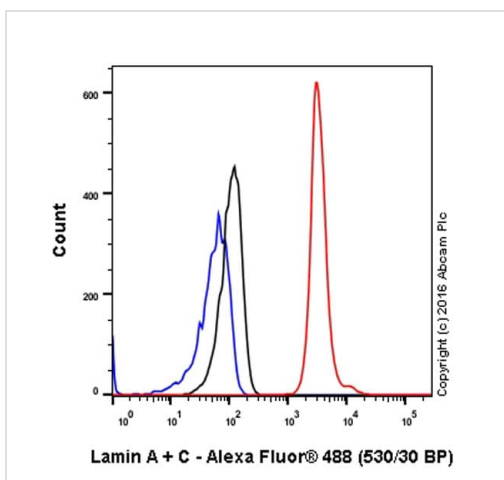
Predicted band size: 74 kDa

Observed band size: 68 kDa

Exposure time: 7 seconds

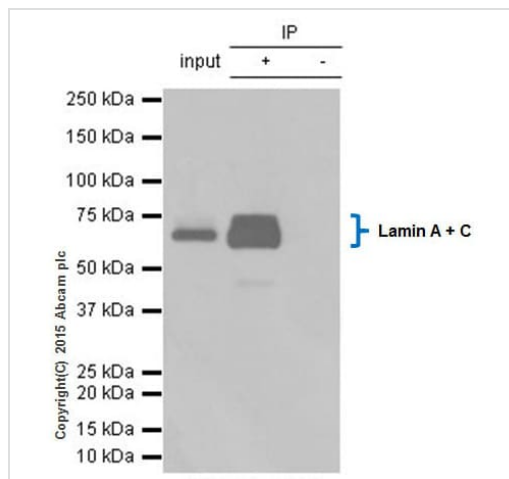
Blocking/Diluting buffer and concentration: 5% NFDM/TBST.

ab108922 does not cross react with Lamin B2.



Flow Cytometry (Intracellular) - Anti-Lamin A + Lamin B1 + Lamin C antibody [EPR4068] (ab108922)

Intracellular Flow Cytometry analysis of HeLa cells labelling Lamin A + B1 + C with purified ab108922 at a dilution of 1/20 (red). Cells were fixed with 4% paraformaldehyde and permeabilized with 90% methanol. An Alexa Fluor®488-conjugated goat anti-rabbit IgG (1/2000) was used as the secondary antibody. Black - Isotype control, rabbit monoclonal IgG. Blue - Unlabelled control, cells without incubation with primary and secondary antibodies.

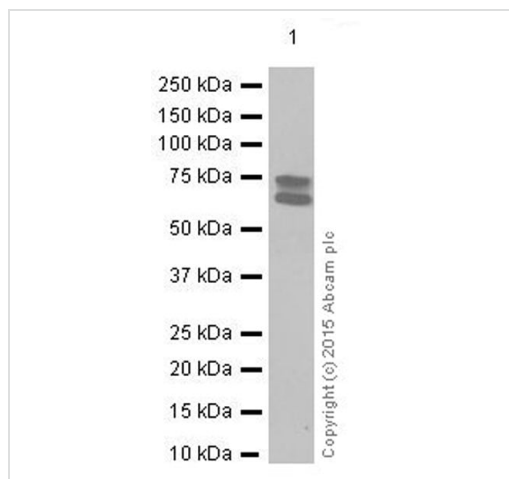


Immunoprecipitation - Anti-Lamin A + Lamin B1 +
Lamin C antibody [EPR4068] (ab108922)

ab108922 (purified) at 1/20 immunoprecipitating Lamin A + B1 + C in 10 µg HepG2 (Lanes 1 and 2, observed at 70, 74, and 65 kDa - ab108922 recognises three isoforms). Lane 3 - PBS. For western blotting, VeriBlot for IP Detection Reagent (HRP) ([ab131366](#)), was used for detection at 1/10,000 dilution.

Blocking buffer and concentration: 5% NFDM/TBST.

Dilution buffer and concentration: 5% NFDM/TBST.



Western blot - Anti-Lamin A + Lamin B1 + Lamin C
antibody [EPR4068] (ab108922)

Anti-Lamin A + Lamin B1 + Lamin C antibody [EPR4068]
(ab108922) at 1/10000 dilution (purified) + HeLa cell lysate at 10
µg

Secondary

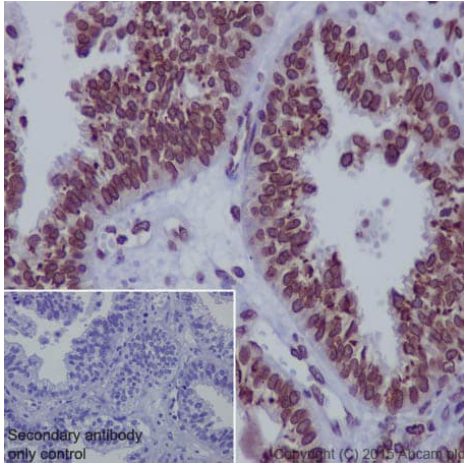
HRP goat anti-rabbit IgG (H+L) at 1/100000 dilution

Predicted band size: 74 kDa

Additional bands at: 65 kDa (possible isoform), 70 kDa (possible
isoform), 74 kDa (possible isoform)

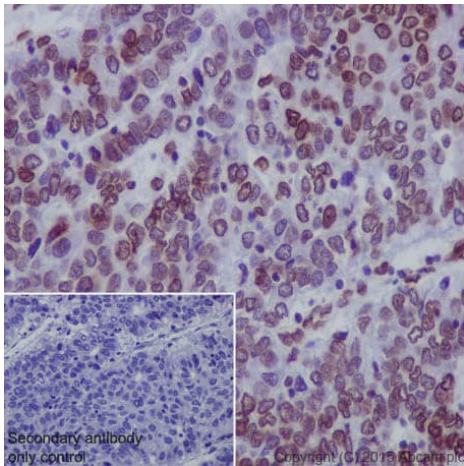
Blocking buffer: 5% NFDM/TBST

Dilution buffer: 5% NFDM/TBST



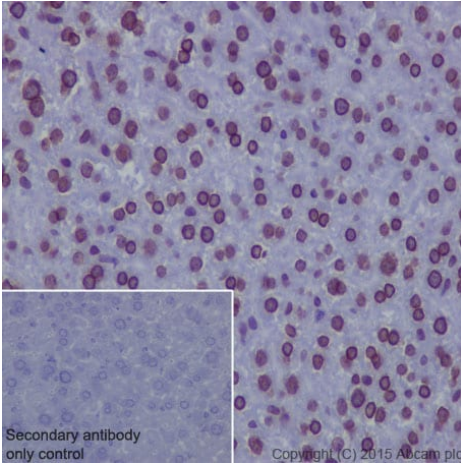
Immunohistochemical staining of paraffin embedded human ovarian carcinoma with purified ab108922 at a working dilution of 1/200. The secondary antibody used is HRP goat anti-rabbit IgG H&L ([ab97051](#)) at 1/500. The sample is counter-stained with hematoxylin. Antigen retrieval was performed using Tris-EDTA buffer, pH 9.0. PBS was used instead of the primary antibody as the negative control, and is shown in the inset.

Immunohistochemistry (Formalin/PFA-fixed paraffin-embedded sections) - Anti-Lamin A + Lamin B1 + Lamin C antibody [EPR4068] (ab108922)



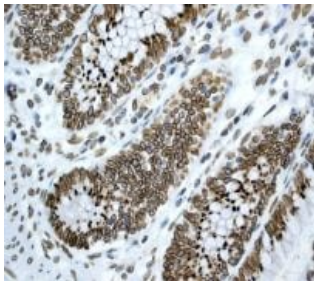
Immunohistochemical staining of paraffin embedded human liver carcinoma with purified ab108922 at a working dilution of 1/200. The secondary antibody used is HRP goat anti-rabbit IgG H&L ([ab97051](#)) at 1/500. The sample is counter-stained with hematoxylin. Antigen retrieval was performed using Tris-EDTA buffer, pH 9.0. PBS was used instead of the primary antibody as the negative control, and is shown in the inset.

Immunohistochemistry (Formalin/PFA-fixed paraffin-embedded sections) - Anti-Lamin A + Lamin B1 + Lamin C antibody [EPR4068] (ab108922)



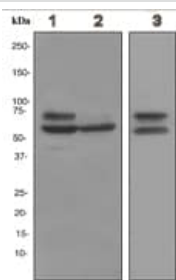
Immunohistochemical staining of paraffin embedded mouse liver with purified ab108922 at a working dilution of 1/200. The secondary antibody used is HRP goat anti-rabbit IgG H&L ([ab97051](#)) at 1/500. The sample is counter-stained with hematoxylin. Antigen retrieval was performed using Tris-EDTA buffer, pH 9.0. PBS was used instead of the primary antibody as the negative control, and is shown in the inset.

Immunohistochemistry (Formalin/PFA-fixed paraffin-embedded sections) - Anti-Lamin A + Lamin B1 + Lamin C antibody [EPR4068] (ab108922)



Immunohistochemical analysis of paraffin-embedded human colonic tissue using unpurified ab108922 at a dilution of 1/100

Immunohistochemistry (Formalin/PFA-fixed paraffin-embedded sections) - Anti-Lamin A + Lamin B1 + Lamin C antibody [EPR4068] (ab108922)



All lanes : Anti-Lamin A + Lamin B1 + Lamin C antibody [EPR4068] (ab108922) at 1/1000 dilution (unpurified)

Lane 1 : HeLa cell lysate

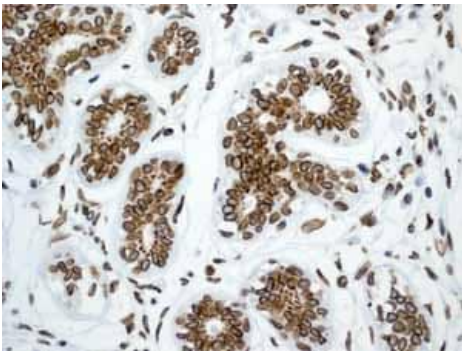
Lane 2 : HepG2 cell lysate

Lane 3 : HACAT cell lysate

Lysates/proteins at 10 µg per lane.

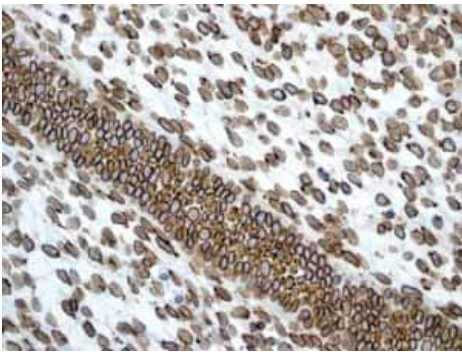
Predicted band size: 74 kDa

Western blot - Anti-Lamin A + Lamin B1 + Lamin C antibody [EPR4068] (ab108922)



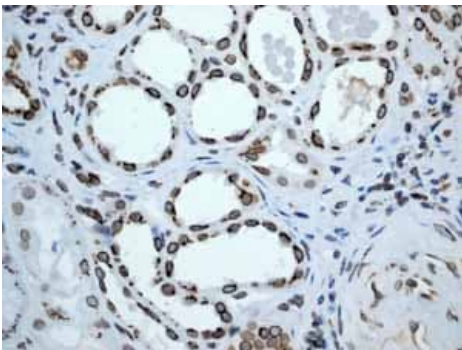
Immunohistochemistry (Formalin/PFA-fixed paraffin-embedded sections) - Anti-Lamin A + Lamin B1 + Lamin C antibody [EPR4068] (ab108922)

Unpurified ab108922 showing positive staining in Normal human breast tissue.



Immunohistochemistry (Formalin/PFA-fixed paraffin-embedded sections) - Anti-Lamin A + Lamin B1 + Lamin C antibody [EPR4068] (ab108922)

Unpurified ab108922 showing positive staining in Normal human uterus tissue.



Immunohistochemistry (Formalin/PFA-fixed paraffin-embedded sections) - Anti-Lamin A + Lamin B1 + Lamin C antibody [EPR4068] (ab108922)

Unpurified ab108922 showing positive staining in Normal human kidney tissue.

Why choose a recombinant antibody?



Research with confidence
Consistent and reproducible results



Long-term and scalable supply
Recombinant technology



Success from the first experiment
Confirmed specificity



Ethical standards compliant
Animal-free production

Anti-Lamin A + Lamin B1 + Lamin C antibody
[EPR4068] (ab108922)

Please note: All products are "FOR RESEARCH USE ONLY. NOT FOR USE IN DIAGNOSTIC PROCEDURES"

Our Abpromise to you: Quality guaranteed and expert technical support

- Replacement or refund for products not performing as stated on the datasheet
- Valid for 12 months from date of delivery
- Response to your inquiry within 24 hours
- We provide support in Chinese, English, French, German, Japanese and Spanish
- Extensive multi-media technical resources to help you
- We investigate all quality concerns to ensure our products perform to the highest standards

If the product does not perform as described on this datasheet, we will offer a refund or replacement. For full details of the Abpromise, please visit <https://www.abcam.cn/abpromise> or contact our technical team.

Terms and conditions

- Guarantee only valid for products bought direct from Abcam or one of our authorized distributors