


Anti-LAMC2 antibody ab96327

[6 References](#) [1 图像](#)

概述

| | |
|-------|---|
| 产品名称 | Anti-LAMC2抗体 |
| 描述 | 兔多克隆抗体to LAMC2 |
| 宿主 | Rabbit |
| 经测试应用 | 适用于: WB |
| 种属反应性 | 与反应: Human 预测可用于: Mouse, Rat, Dog  |
| 免疫原 | Recombinant protein fragment contain a sequence corresponding to a region within amino acids 445 and 627 of Human LAMC2 |
| 阳性对照 | Raji whole cell lysate |
| 常规说明 | <p>The Life Science industry has been in the grips of a reproducibility crisis for a number of years. Abcam is leading the way in addressing this with our range of recombinant monoclonal antibodies and knockout edited cell lines for gold-standard validation. Please check that this product meets your needs before purchasing.</p> <p>If you have any questions, special requirements or concerns, please send us an inquiry and/or contact our Support team ahead of purchase. Recommended alternatives for this product can be found below, along with publications, customer reviews and Q&As</p> |

性能

| | |
|------|---|
| 形式 | Liquid |
| 存放说明 | Shipped at 4°C. Upon delivery aliquot and store at -20°C or -80°C. Avoid repeated freeze / thaw cycles. |
| 存储溶液 | pH: 7.00 Preservative: 0.01% Thimerosal (merthiolate) Constituents: 1.21% Tris, 0.75% Glycine, 20% Glycerol (glycerin, glycerine) |
| 纯度 | Immunogen affinity purified |
| 克隆 | 多克隆 |
| 同种型 | IgG |

应用

The Abpromise guarantee

Abpromise™ 承诺保证使用ab96327于以下的经测试应用

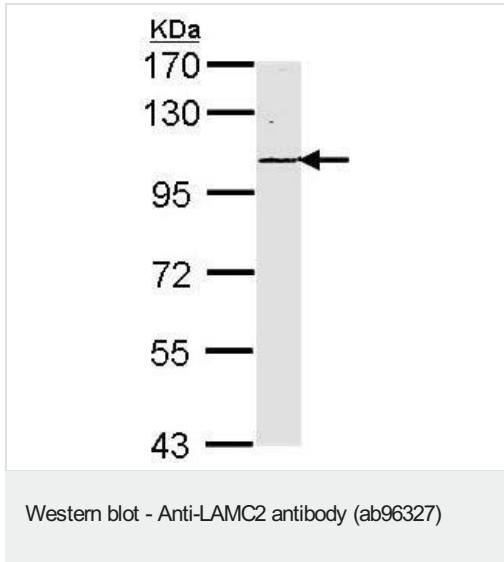
“应用说明”部分下显示的仅为推荐的起始稀释度;实际最佳的稀释度/浓度应由使用者检定。

| 应用 | Ab评论 | 说明 |
|----|------|--|
| WB | | 1/500 - 1/3000. Predicted molecular weight: 131 kDa. |

靶标

| | |
|--------------|--|
| 功能 | Binding to cells via a high affinity receptor, laminin is thought to mediate the attachment, migration and organization of cells into tissues during embryonic development by interacting with other extracellular matrix components. Ladsin exerts cell-scattering activity toward a wide variety of cells, including epithelial, endothelial, and fibroblastic cells. |
| 组织特异性 | The large variant is expressed only in specific epithelial cells of embryonic and neonatal tissues. In 17-week old embryo the small variant is found in cerebral cortex, lung, and distal tubes of kidney, but not in epithelia except for distal tubuli. |
| 疾病相关 | Defects in LAMC2 are a cause of epidermolysis bullosa junctional Herlitz type (H-JEB) [MIM:226700]; also known as junctional epidermolysis bullosa Herlitz-Pearson type. JEB defines a group of blistering skin diseases characterized by tissue separation which occurs within the dermo-epidermal basement membrane. H-JEB is a severe, infantile and lethal form. Death occurs usually within the first six months of life. Occasionally, children survive to teens. H-JEB is marked by bullous lesions at birth and extensive denudation of skin and mucous membranes that may be hemorrhagic. |
| 序列相似性 | Contains 8 laminin EGF-like domains. Contains 1 laminin IV type A domain. |
| 结构域 | The alpha-helical domains I and II are thought to interact with other laminin chains to form a coiled coil structure. Domain IV is globular. |
| 细胞定位 | Secreted > extracellular space > extracellular matrix > basement membrane. Major component. |

图片



Anti-LAMC2 antibody (ab96327) at 1/1000 dilution + Raji cell lysate
at 30 μ g

Predicted band size: 131 kDa

Please note: All products are "FOR RESEARCH USE ONLY. NOT FOR USE IN DIAGNOSTIC PROCEDURES"

Our Abpromise to you: Quality guaranteed and expert technical support

- Replacement or refund for products not performing as stated on the datasheet
- Valid for 12 months from date of delivery
- Response to your inquiry within 24 hours
- We provide support in Chinese, English, French, German, Japanese and Spanish
- Extensive multi-media technical resources to help you
- We investigate all quality concerns to ensure our products perform to the highest standards

If the product does not perform as described on this datasheet, we will offer a refund or replacement. For full details of the Abpromise, please visit <https://www.abcam.cn/abpromise> or contact our technical team.

Terms and conditions

- Guarantee only valid for products bought direct from Abcam or one of our authorized distributors